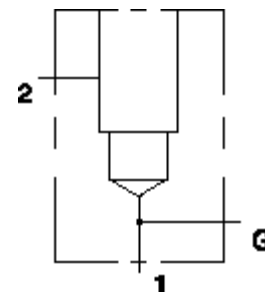


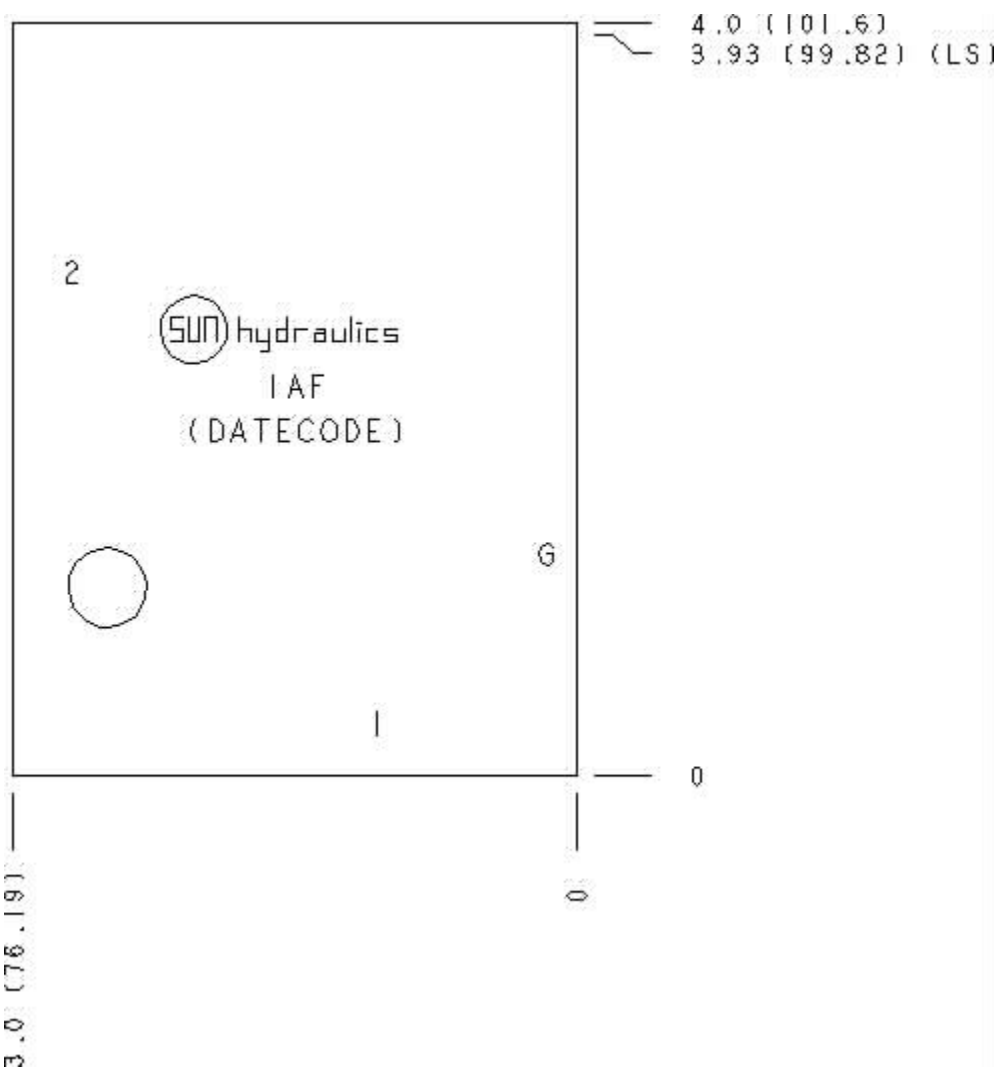
Functional Group:
 Products : Manifolds : Line mount : Check : 2 Port : Ninety Degree

Model:
 IAF

Aluminum Body Pressure Rating: 3000 psi (210 bar)
 Ductile Iron Body Pressure Rating: 5000 psi (350 bar)



Face: 8



Cartridge extension measurement is to the centerline of the cartridge.

Port Headings and Sizes

IAF Ports 1 & 2

1 1/4" NPTF

Technical Data

	U.S. Units	Metric Units
Model Weight	1.79 lb.	0.81 kg.
Cavity	T-16A	
Body Features	Ninety degree with gauge port	
Body Type	Line mount	
Interface	None	
Open Cavity Quantity	1	
Mounting Hole Diameter	.42 in.	10,7 mm
Mounting Hole Depth	Through	
Mounting Hole Quantity	1	

Option Selection

U.S. Dollar ▼

Model Code	Description
IAF	Aluminum, Buna-N, U.S. Units
IAF/S	Ductile Iron, Buna-N, U.S. Units

Special Notes

- No Special Notes Available for selected model.