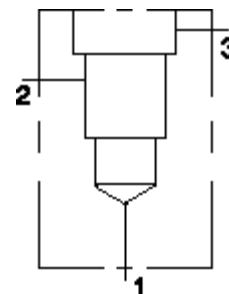


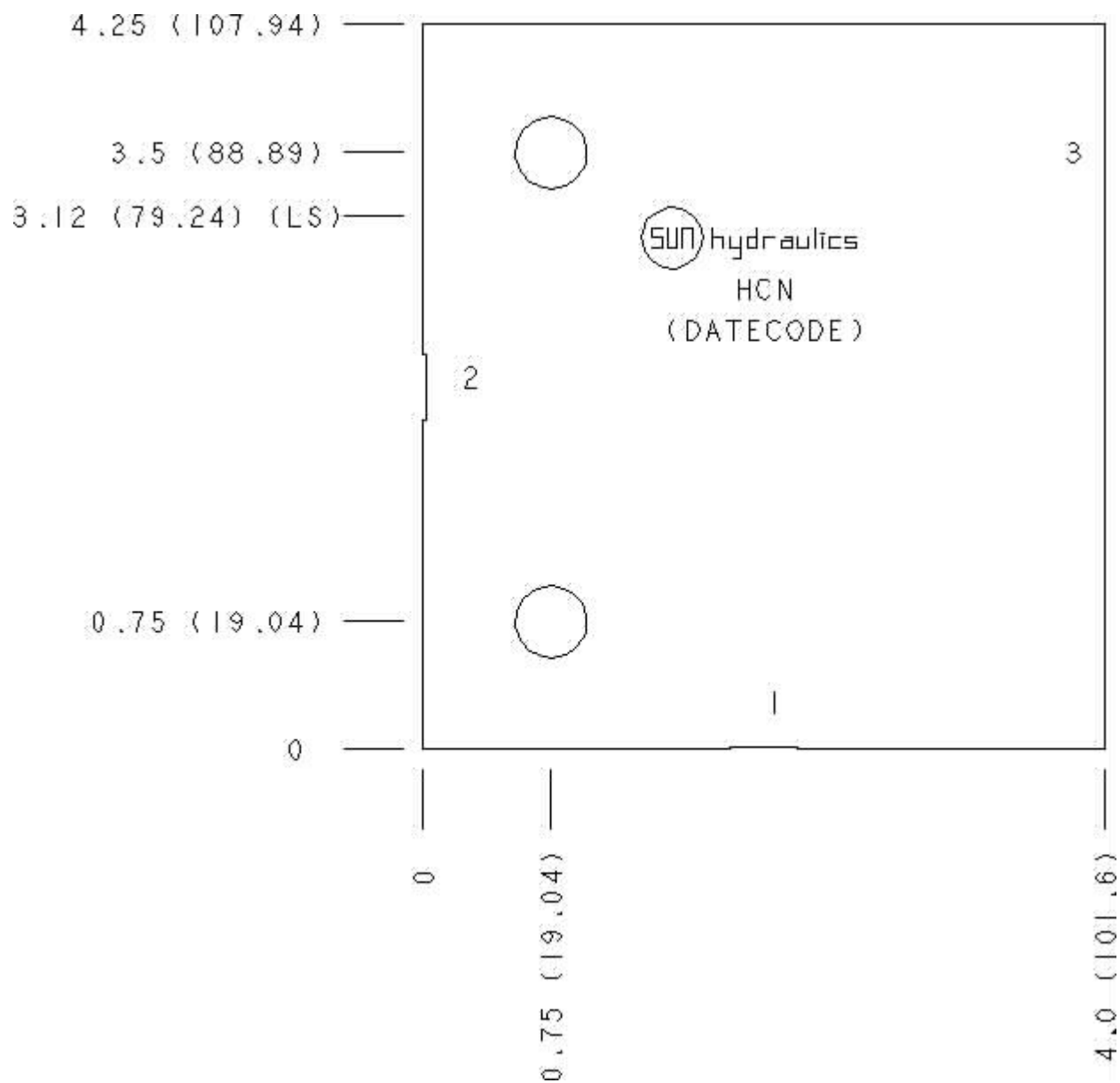
Functional Group:
 Products : Manifolds : Line mount : Counterbalance : 3 Port : Ninety Degree

Model:
 HCN

Aluminum Body Pressure Rating: 3000 psi (210 bar)
 Ductile Iron Body Pressure Rating: 5000 psi (350 bar)



Face: 6



Cartridge extension measurement is to the centerline of the cartridge.

Port Headings and Sizes

HCN	Ports 1 & 2	SAE 20
HCN	Port 3	SAE 6

Technical Data

	U.S. Units	Metric Units
Model Weight	2.75 lb.	1.25 kg.
Cavity	T-17A	
Body Features	Ninety degree	
Body Type	Line mount	
Interface	None	
Open Cavity Quantity	1	
Mounting Hole Diameter	.42 in.	10,7 mm
Mounting Hole Depth	Through	
Mounting Hole Quantity	2	

Option Selection

U.S. Dollar 

	Model Code	Description
	HCN	Aluminum, Buna-N, U.S. Units
	HCN/S	Ductile Iron, Buna-N, U.S. Units

Special Notes

- No Special Notes Available for selected model.
-
-