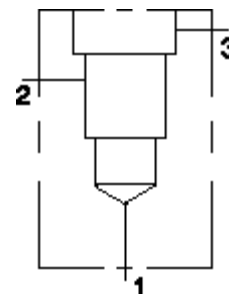


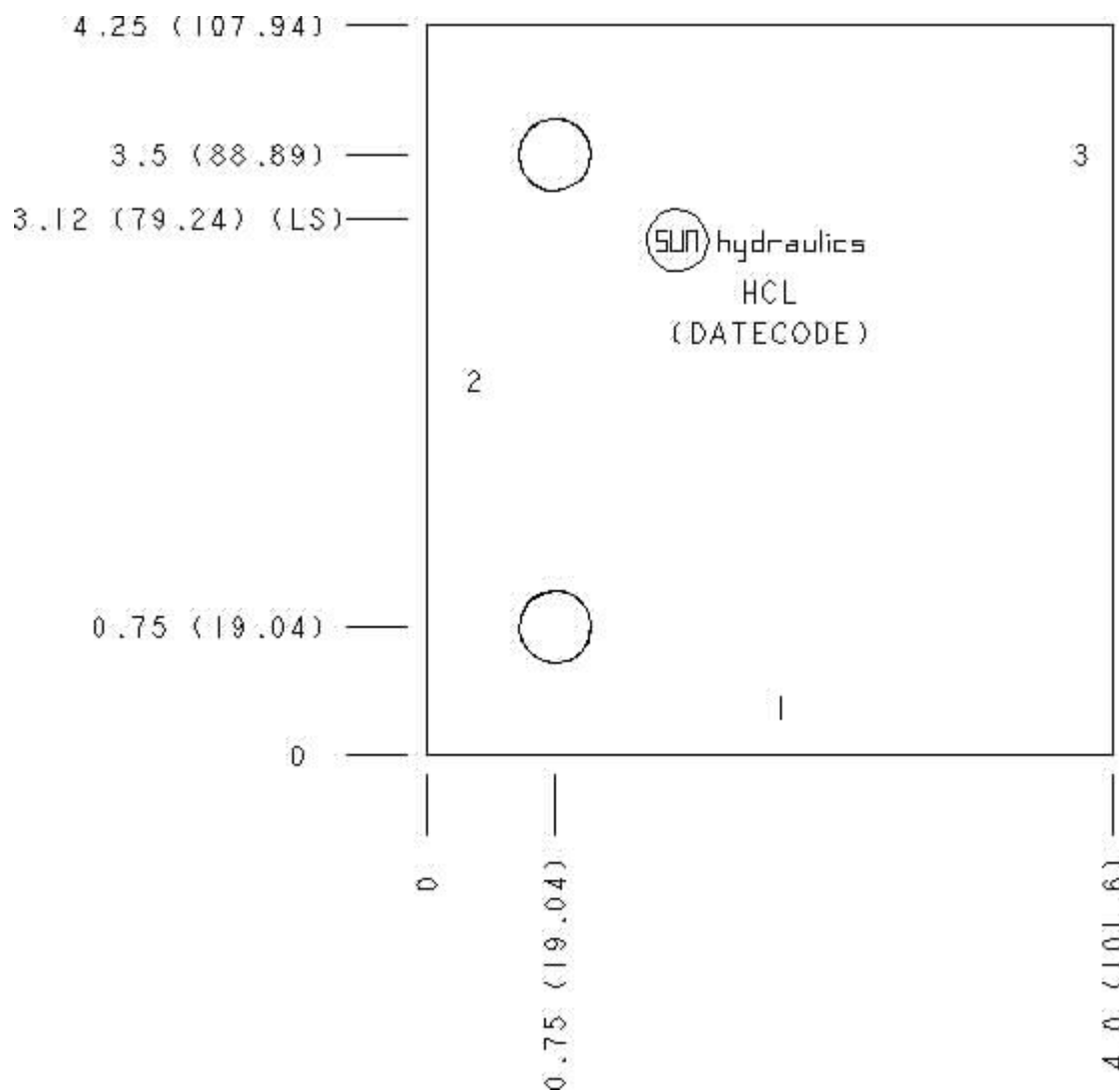
Functional Group:  
 Products : Manifolds : Line mount : Counterbalance : 3 Port : Ninety Degree

Model:  
 HCL

Aluminum Body Pressure Rating: 3000 psi (210 bar)  
 Ductile Iron Body Pressure Rating: 5000 psi (350 bar)



Face: 6



Cartridge extension measurement is to the centerline of the cartridge.

Port Headings and Sizes

HCL Ports 1 & 2  
HCL Port 3

SAE 12  
SAE 6

Technical Data

|                        | U.S. Units    | Metric Units |
|------------------------|---------------|--------------|
| Model Weight           | 2.97 lb.      | 1.35 kg.     |
| Cavity                 | T-17A         |              |
| Body Features          | Ninety degree |              |
| Body Type              | Line mount    |              |
| Interface              | None          |              |
| Open Cavity Quantity   | 1             |              |
| Mounting Hole Diameter | .42 in.       | 10,7 mm      |
| Mounting Hole Depth    | Through       |              |
| Mounting Hole Quantity | 2             |              |

Option Selection

U.S. Dollar ▼

| Model Code | Description                      |
|------------|----------------------------------|
| HCL        | Aluminum, Buna-N, U.S. Units     |
| HCL/S      | Ductile Iron, Buna-N, U.S. Units |

Special Notes

- No Special Notes Available for selected model.