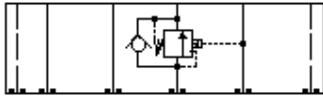
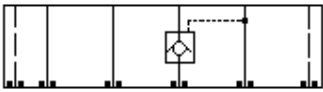


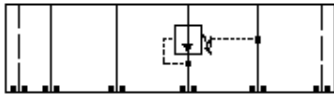
Reducing/Relieving, On B, Tank to A



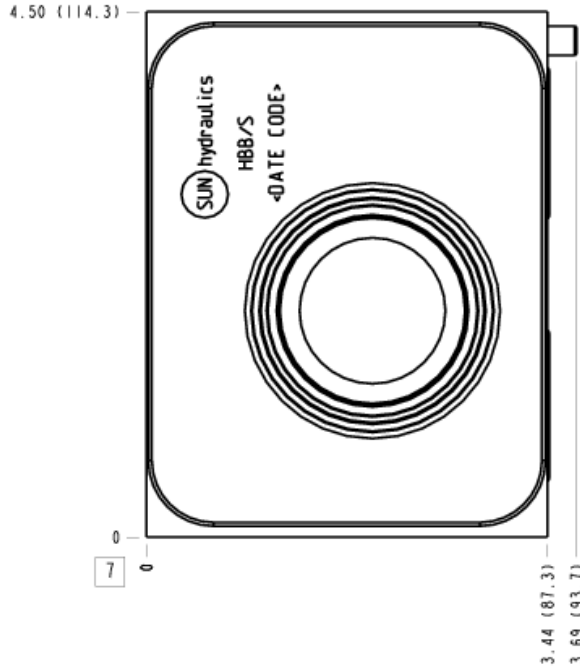
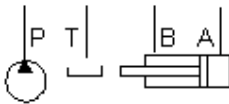
Counterbalance, On B, Pilot from A



Pilot Operated Check, On B Pilot from A



Reducing, On B, Drained to A



TECHNICAL DATA

Body Type	Sandwich
Interface	ISO 08
Body Features	On B, port 3 to A
Stack Height	3.44 in.
Seal Plate Included (see notes)	No
Open Cavities	1
Cavity	T-19A
Model Weight	26.32 lb.

CONFIGURATION

/S Modifier 65-45-12 Ductile Iron, Buna-N, Chem. Black

NOTES

- Seal retainer plate is not required for this model.
- **Important:** Carefully consider the maximum system pressure. The pressure rating of the manifold is dependent on the manifold material, with the port type/size a secondary consideration. Manifolds constructed of aluminum are not rated for pressures higher than 3000 psi (210 bar), regardless of the port type/size specified.

INCLUDED COMPONENTS

Part	Description	Quantity
500-001-114	O-Ring	2
500-001-121	O-Ring	4
811-001-002	Locating Pin	1
A330-006-006	SAE Plug	1

CONFIGURATION OPTIONS

Model Code Example: HBB/S

MODIFIER (S)

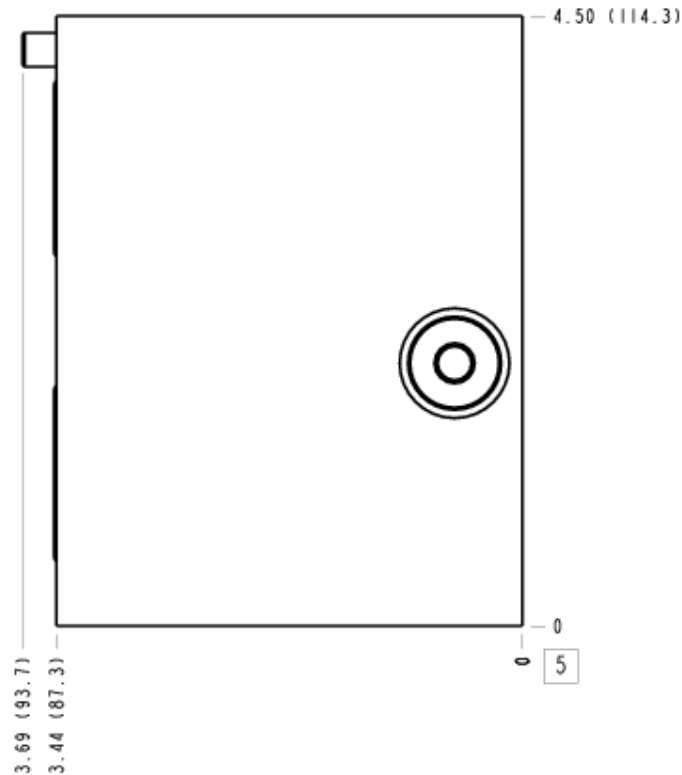
- /S** 65-45-12 Ductile Iron, Buna-N, Chem. Black
6061-T651 Aluminum, Buna-N
- /11** 6061-T651 Aluminum, Buna-N, Clear Anodize - Per MIL SPEC 8625F Type II, Class I
- /10** 6061-T651 Aluminum, Buna-N, Black Anodize - Per MIL SPEC 8625F Type II, Class II
- /V** 6061-T651 Aluminum, Viton
- /16** 6061-T651 Aluminum, Viton, Clear Anodize - Per MIL SPEC 8625F Type II, Class I
- /15** 6061-T651 Aluminum, Viton, Black Anodize - Per MIL SPEC 8625F Type II, Class II
- /S3** 65-45-12 Ductile Iron, Buna-N, Trivalent Clear Zinc with Top Sealer
- /Y** 65-45-12 Ductile Iron, Viton, Chem. Black
- /Y3** 65-45-12 Ductile Iron, Viton, Trivalent Clear Zinc with Top Sealer

MANIFOLD FACES

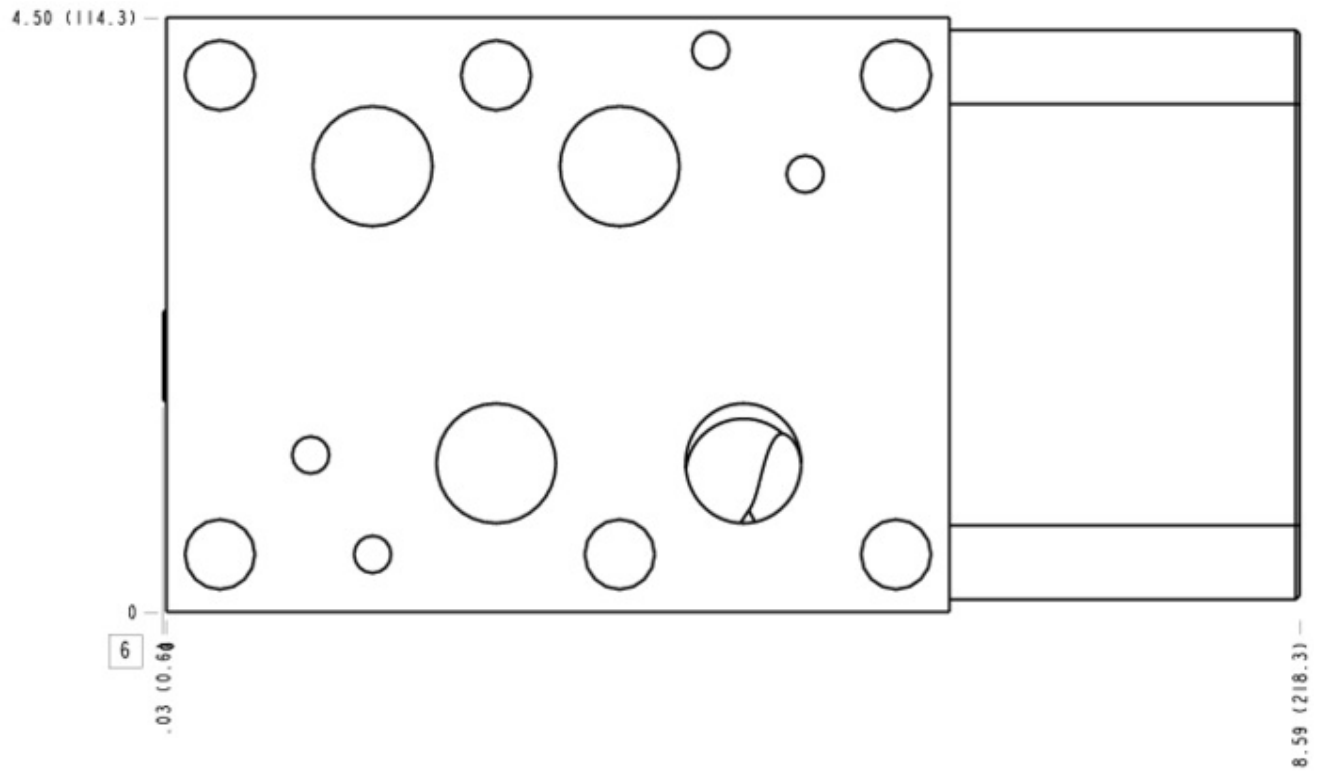
FACE GRID

1	2	3	4
5	6	7	8
9	10	11	12

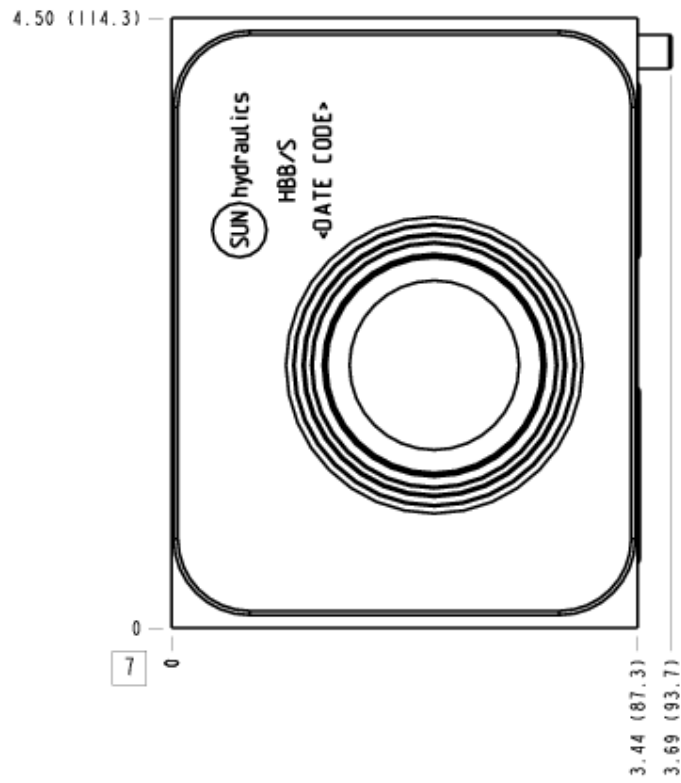
Face 5



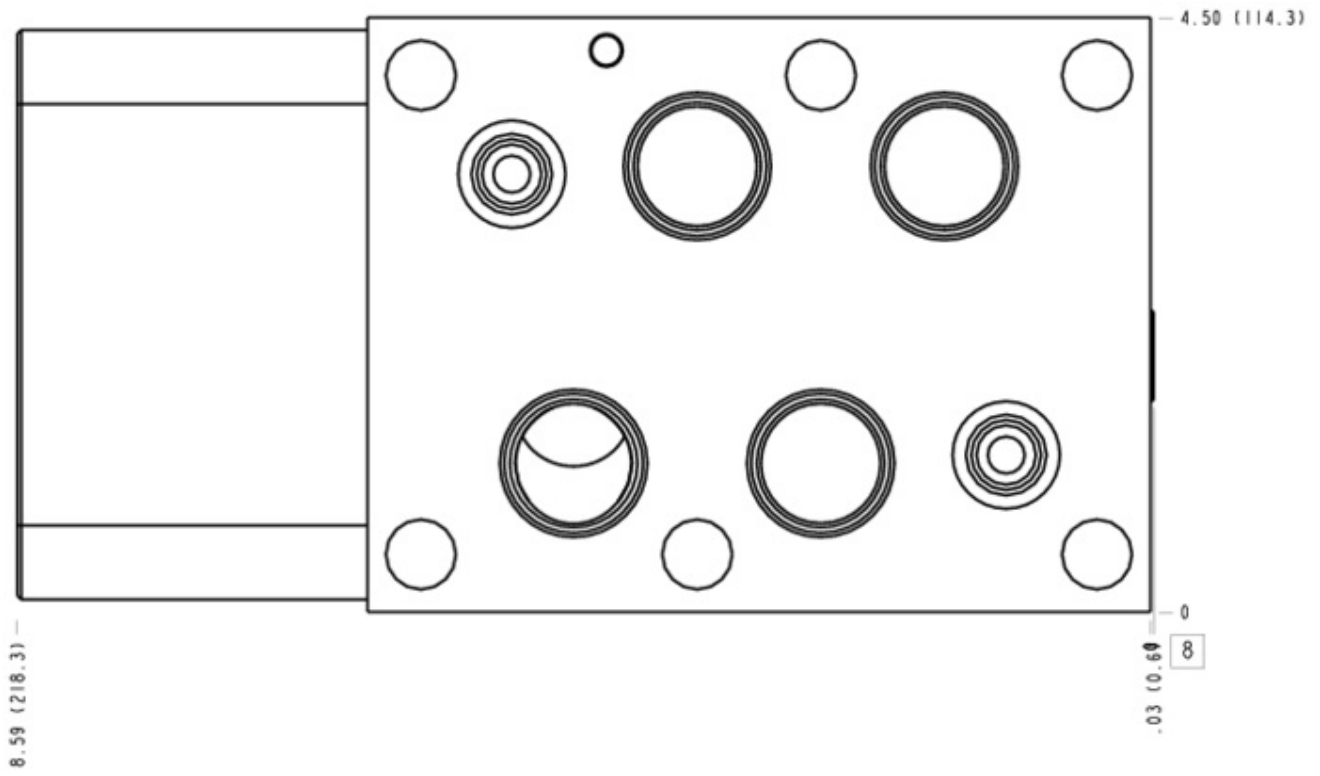
Face 6



Face 7



Face 8



Face 10

