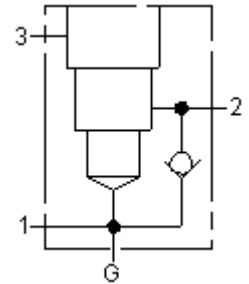

Functional Group:

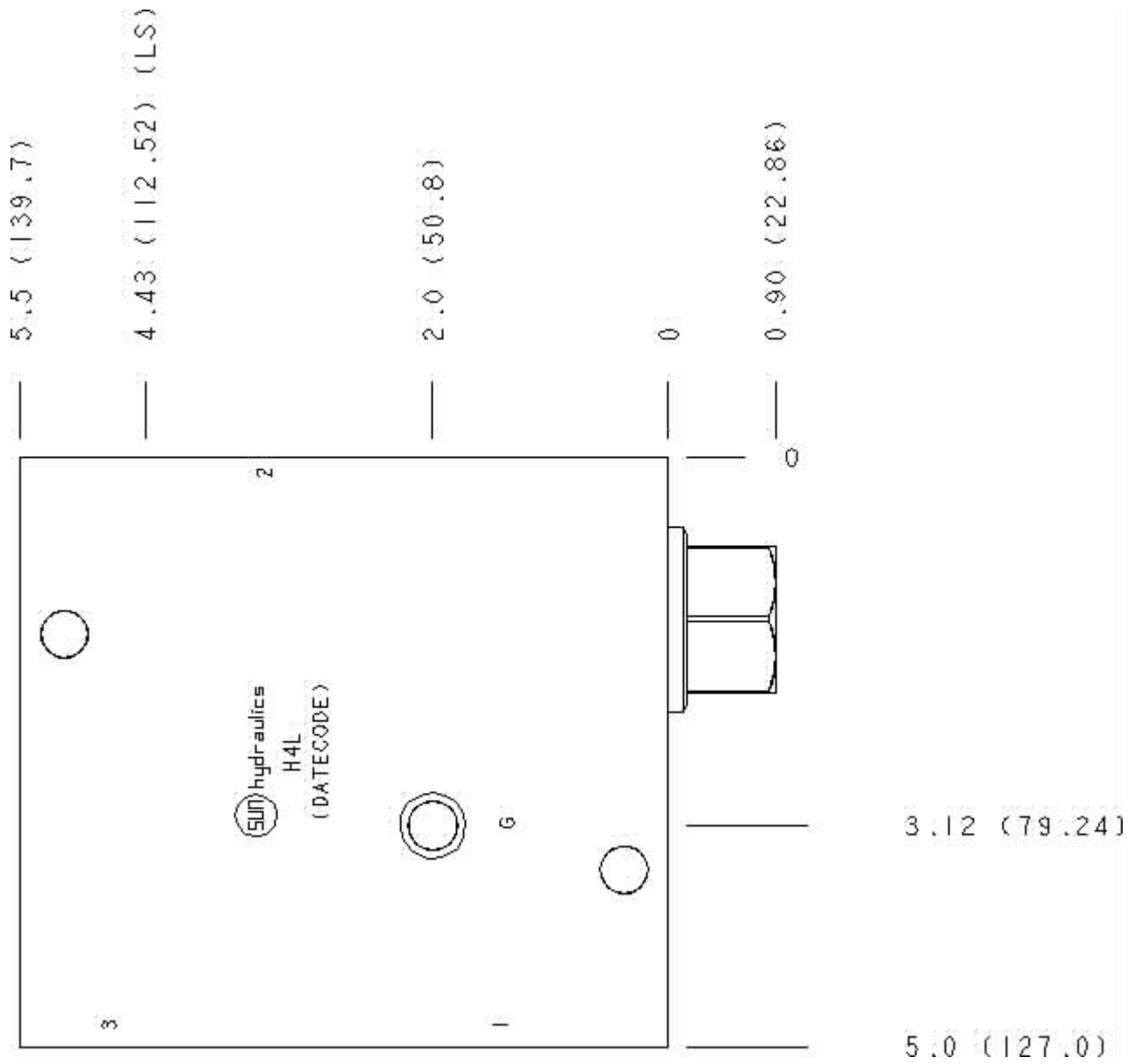
Products : Manifolds : Line mount : Reducing/Relieving : 3 Port : Ninety degree with reverse flow
check - reducing/relieving

Model:
H4L

Aluminum Body Pressure Rating: 3000 psi (210 bar)
Ductile Iron Body Pressure Rating: 5000 psi (350 bar)



Face: 8



Cartridge extension measurement is to the centerline of the cartridge.

Port Headings and Sizes

H4L	Ports 1 & 2	SAE 12
H4L	Port 3	SAE 12
H4L	Gage Port	1/4" NPTF

Technical Data

	U.S. Units	Metric Units
Model Weight	6.26 lb.	2.84 kg.
Cavity	T-17A	
Body Features	Ninety degree with reverse flow check - reducing	
Body Type	Line mount	
Interface	None	
Open Cavity Quantity	1	
Mounting Hole Diameter	.41 in.	10,4 mm
Mounting Hole Depth	Through	
Mounting Hole Quantity	2	

Option Selection

U.S. Dollar ▼

Model Code	Description
H4L	Aluminum, Buna-N, U.S. Units
H4L/V	Aluminum, Viton, U.S. Units
H4L/S	Ductile Iron, Buna-N, U.S. Units
H4L/Y	Ductile Iron, Viton, U.S. Units

Display Components

	Description	Quantity
CXGDXCN	Model	1

Special Notes

- No Special Notes Available for selected model.
-
-