

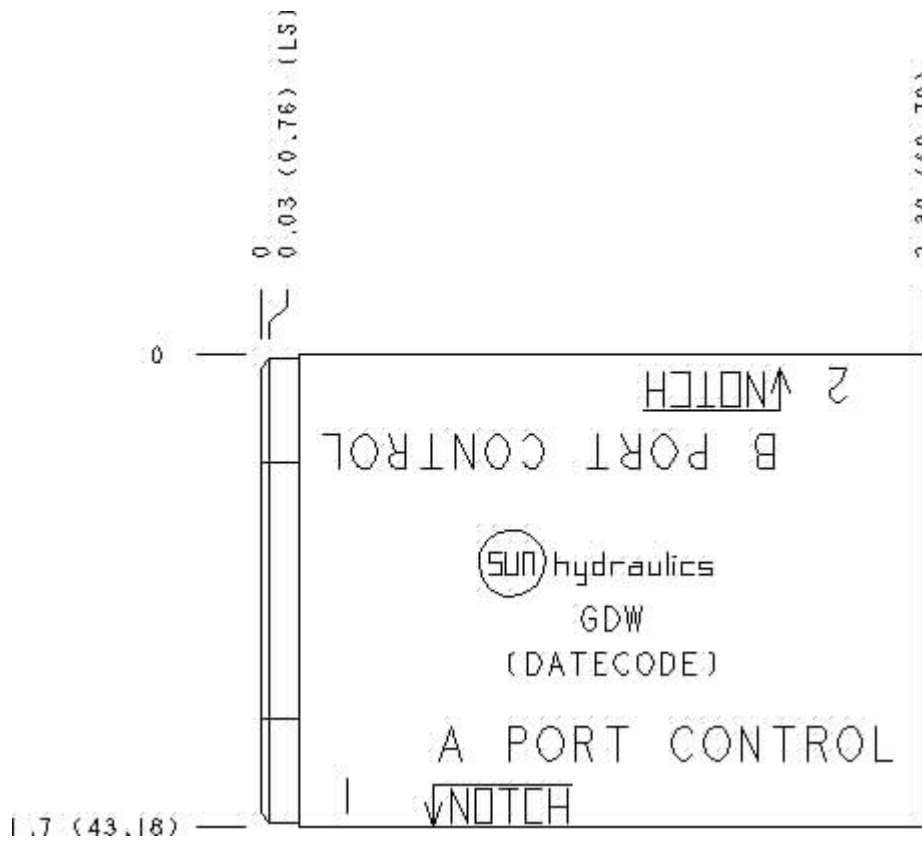
Functional Group:

Products : Manifolds : Sandwich : Check : ISO 03 : T to A

Model:

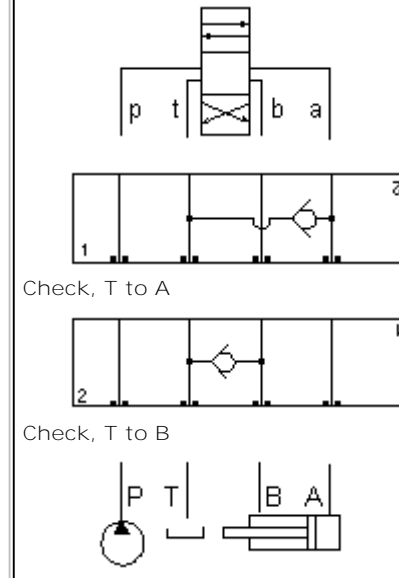
GDW

Face : 10



Cartridge extension measurement is to the centerline of the cartridge.

Function



Aluminum Body Pressure Rating: **3000 psi (210 bar)**

Ductile Iron Body Pressure Rating: **5000 psi (350 bar)**

Technical Data

	U.S. Units	Metric Units
<b>Model Weight</b>	0.59 lb.	0.27 kg.
<b>Cavity</b>	T-13A	
<b>Body Features</b>	A or B to T	
<b>Body Type</b>	Sandwich	
<b>Interface</b>	ISO 03	
<b>Open Cavity Quantity</b>	1	

## Option Selection:

Model Code	Description
GDW	Aluminum, Buna-N, U.S. Units
GDW/S	Ductile Iron, Buna-N, U.S. Units
GDW/V	Aluminum, Viton, U.S. Units
GDW/Y	Ductile Iron, Viton, U.S. Units

---

### Special Notes :

- | For check valve application, use only with CX\*A check valves - free flow nose to side.

---

### Related Information :

- | [Studnuts and Studrods for sandwich bodies - metric units.](#)
- | [How to install multi-functional sandwich bodies - US.](#)
- | [How to install multi-functional sandwich bodies - CETOP](#)
- | [Studnuts and Studrods for sandwich bodies - US units](#)

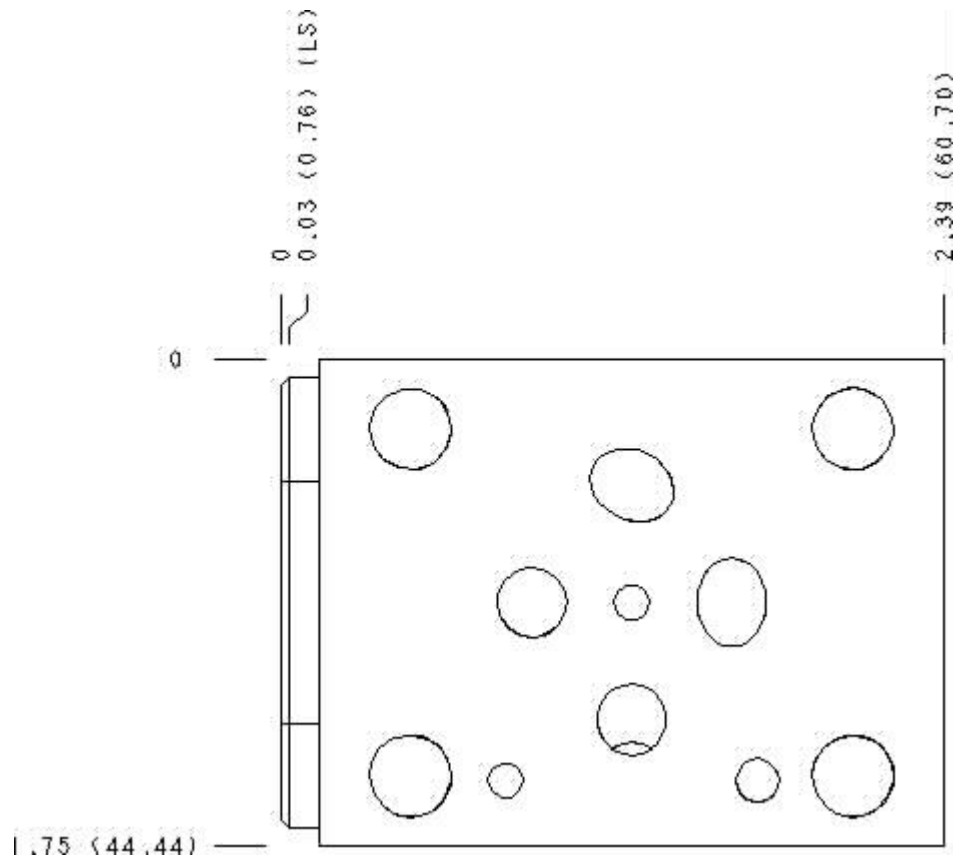


Functional Group:  
Products : Manifolds : Sandwich : Check : ISO 03 : T to A

Model:  
GDW

Face : 6

---



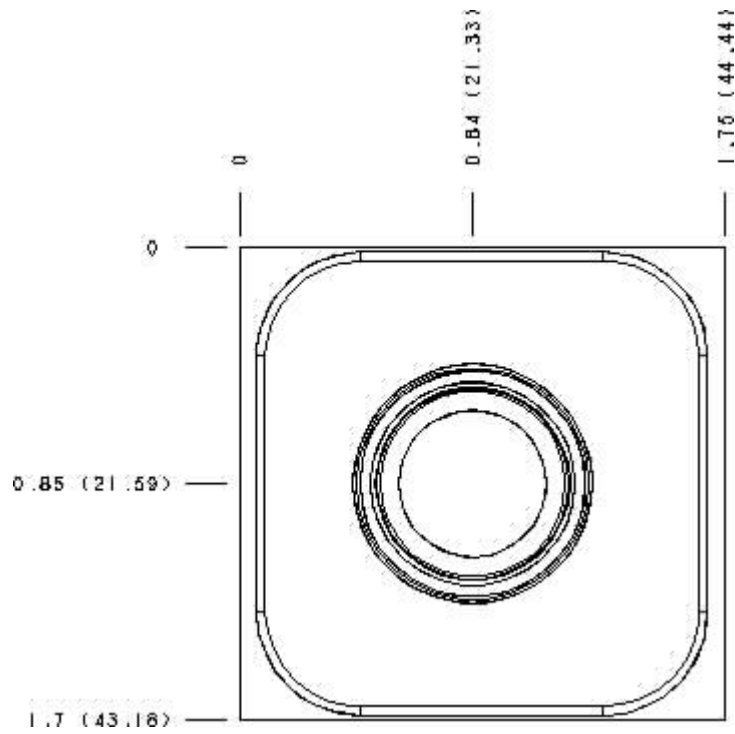
Cartridge extension measurement is to the centerline of the cartridge.



Functional Group:  
 Products : Manifolds : Sandwich : Check : ISO 03 : T to A

Model:  
 GDW

Face : 9



Cartridge extension measurement is to the centerline of the cartridge.

---

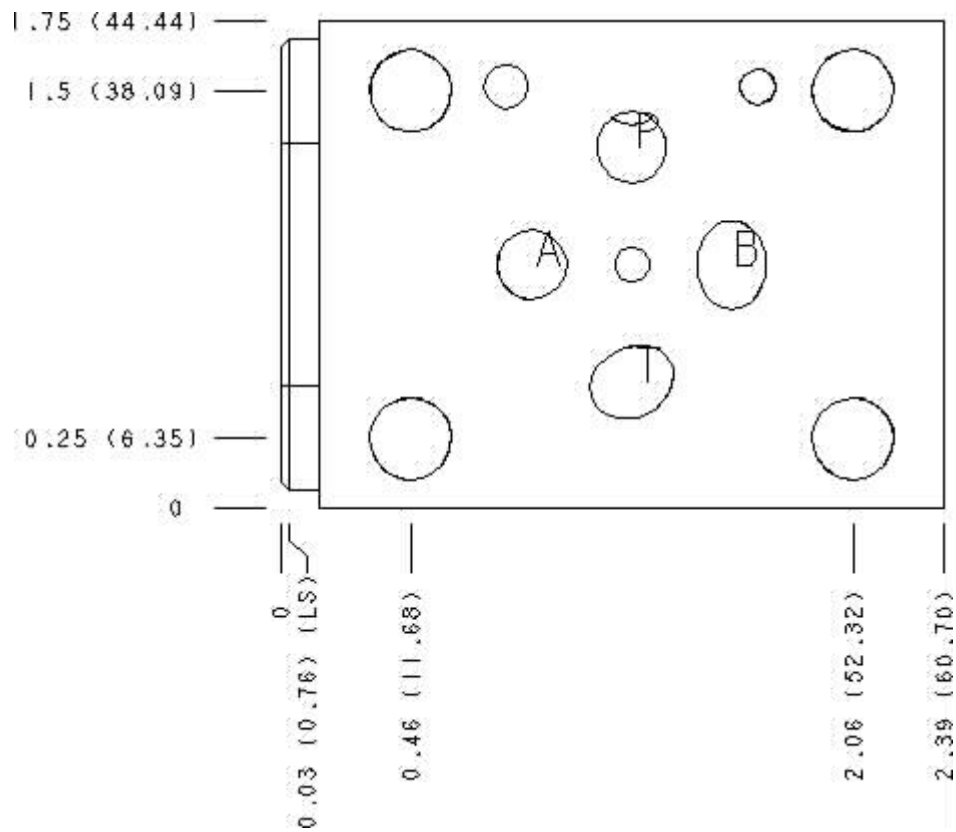


Functional Group:  
Products : Manifolds : Sandwich : Check : ISO 03 : T to A

Model:  
GDW

Face : 14

---



Cartridge extension measurement is to the centerline of the cartridge.



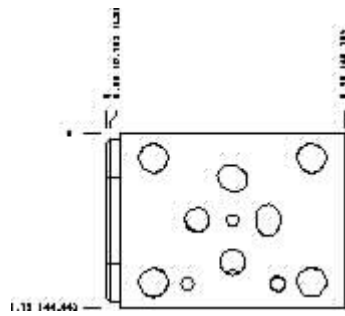
Functional Group:

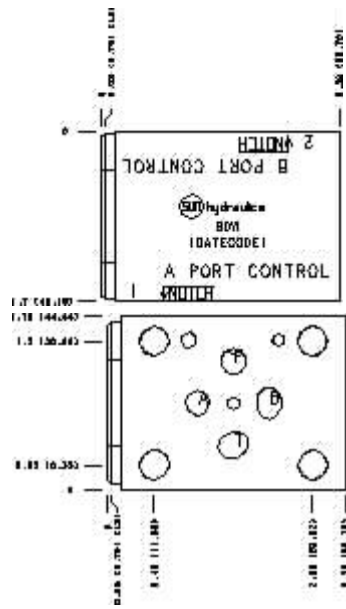
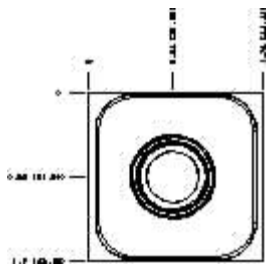
Products : Manifolds : Sandwich : Check : ISO 03 : T to A

Model:  
GDW

Projection Type

All Dimensions in Inches(mm)





Copyright © 2007-2008 Sun Hydraulics Corporation.  
All rights reserved.

[Terms and Conditions](#) - [Statement of Privacy](#)