

Functional Group:

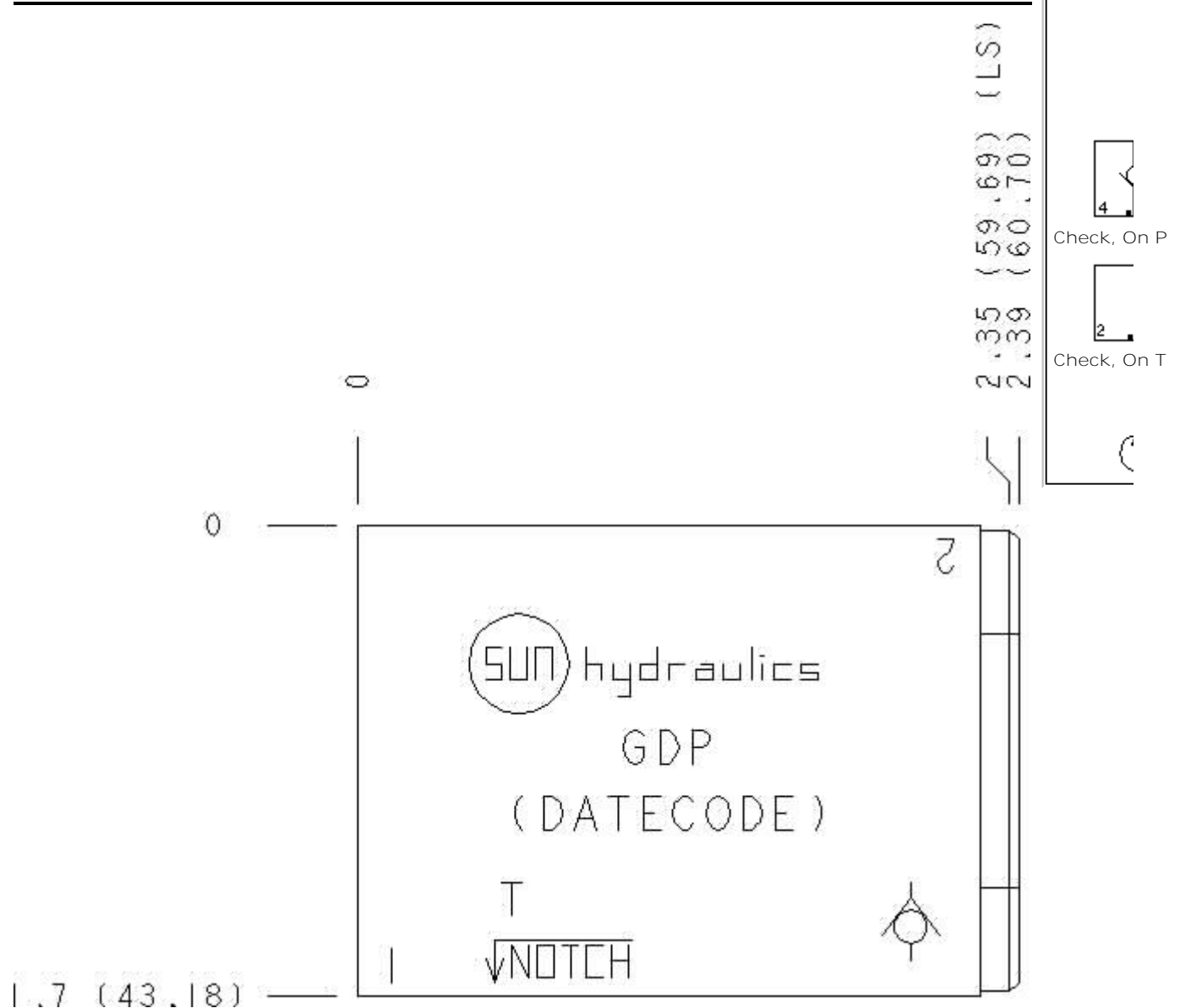
Products : Manifolds : Sandwich : Check : ISO 03 : On P

Model:

GDP

Face : 6

Function



Cartridge extension measurement is to the centerline of the cartridge.

Aluminum Body Pressure Rating: **3000 psi (210 bar)**

Ductile Iron Body Pressure Rating: **5000 psi (350 bar)**

Technical Data

	U.S. Units	Metric Units

Model Weight	0.58 lb.	0.26 kg.
Cavity	T-13A	
Body Features	Into P or out of T	
Body Type	Sandwich	
Interface	ISO 03	
Open Cavity Quantity	1	
Stack Height	1.75 in.	44,5 mm

Option Selection:

Model Code	Description
GDP	Aluminum, Buna-N, U.S. Units
GDP/S	Ductile Iron, Buna-N, U.S. Units
GDP/V	Aluminum, Viton, U.S. Units
GDP/Y	Ductile Iron, Viton, U.S. Units

Special Notes :

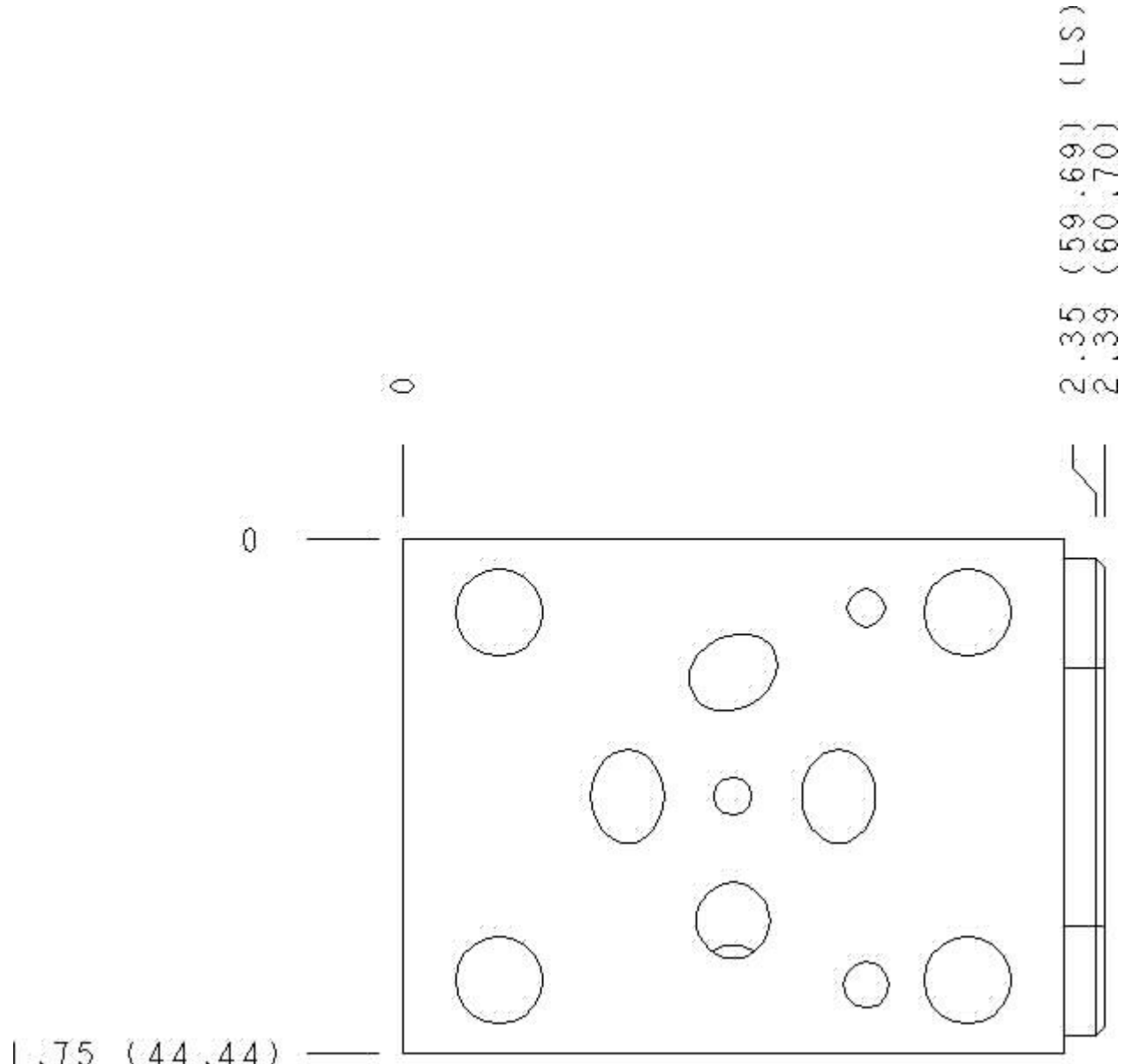
- 1 For check valve application, use only with CX*A check valves - free flow nose to side.



Functional Group:
Products : Manifolds : Sandwich : Check : ISO 03 : On P

Model:
GDP

Face : 2



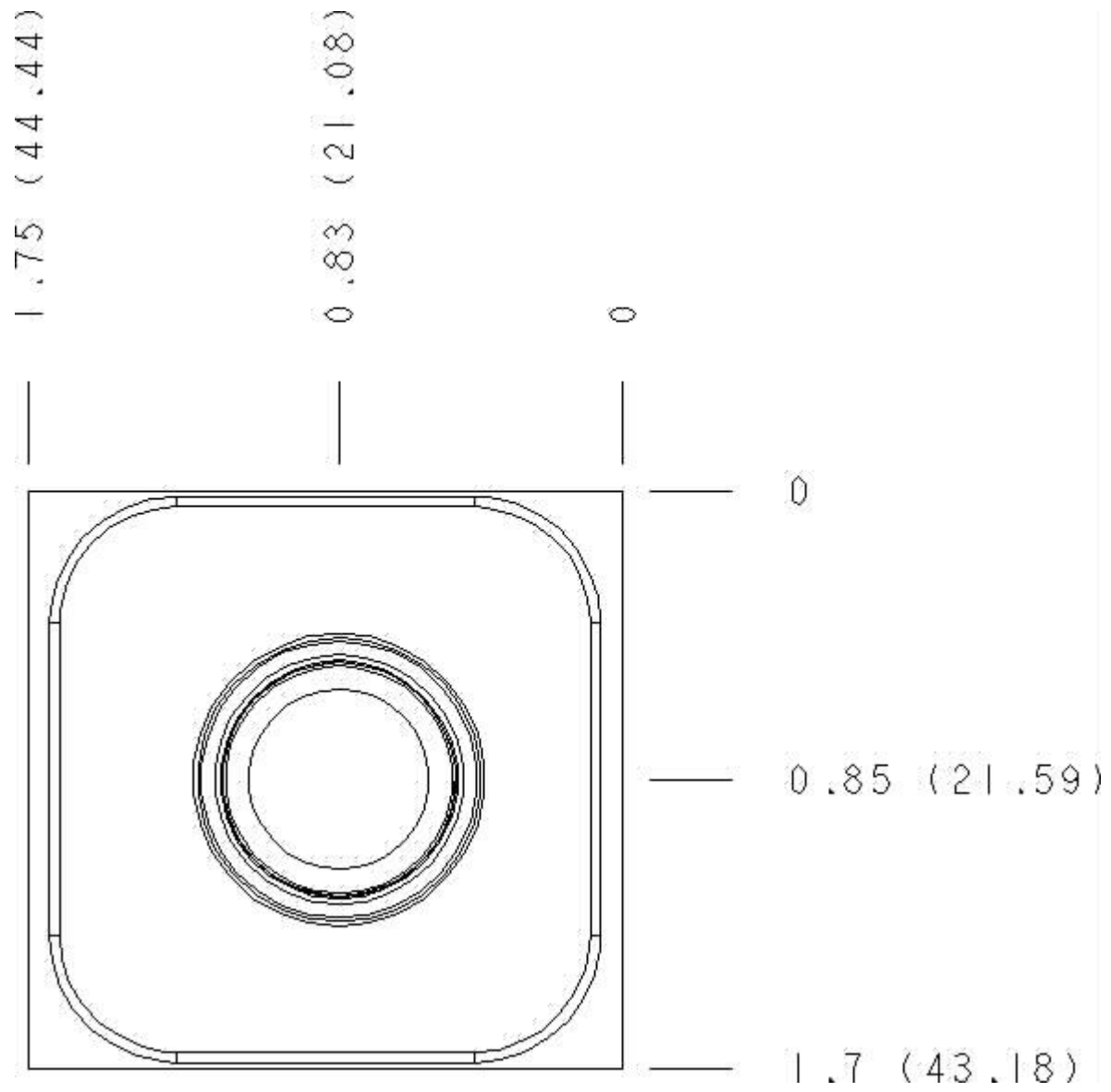
Cartridge extension measurement is to the centerline of the cartridge.



Functional Group:
 Products : Manifolds : Sandwich : Check : ISO 03 : On P

Model:
 GDP

Face : 7



Cartridge extension measurement is to the centerline of the cartridge.

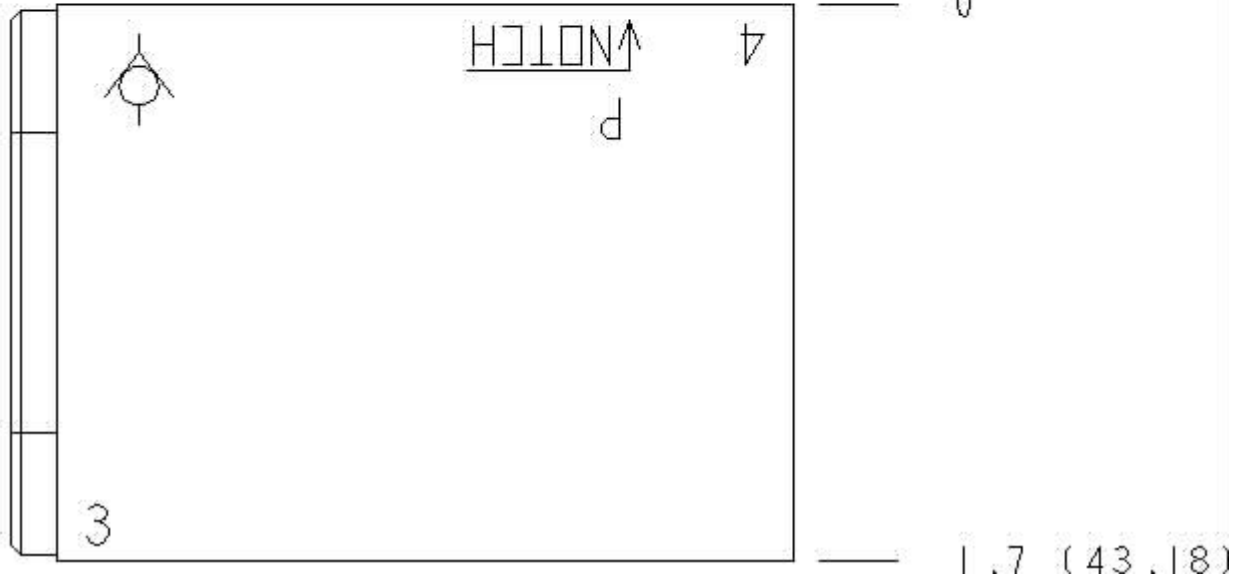


Functional Group:
 Products : Manifolds : Sandwich : Check : ISO 03 : On P

Model:
 GDP

Face : 8

2.39 (60.70) (LS)
2.35 (59.69) (LS)



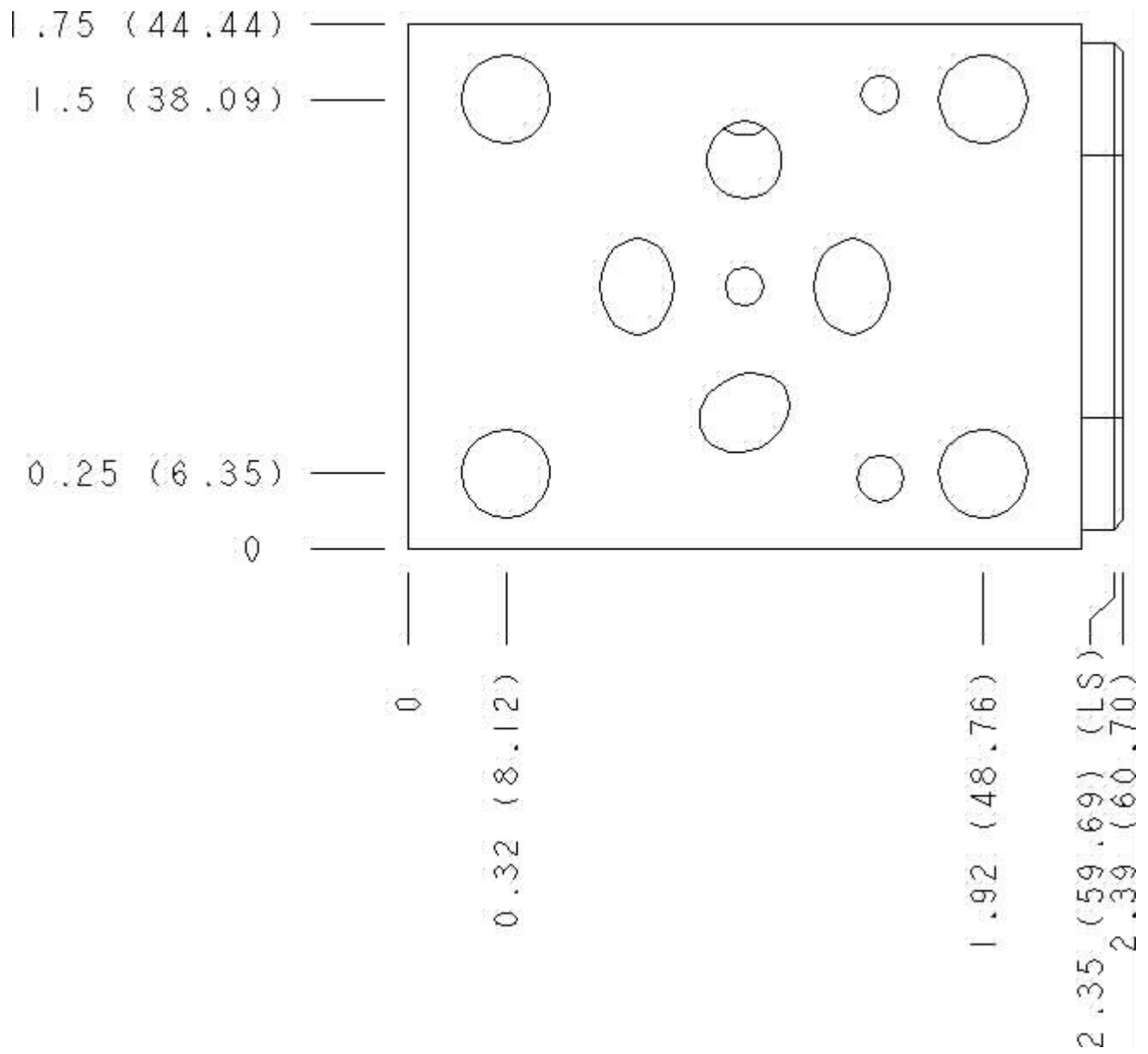
Cartridge extension measurement is to the centerline of the cartridge.



Functional Group:
Products : Manifolds : Sandwich : Check : ISO 03 : On P

Model:
GDP

Face : 10



Cartridge extension measurement is to the centerline of the cartridge.



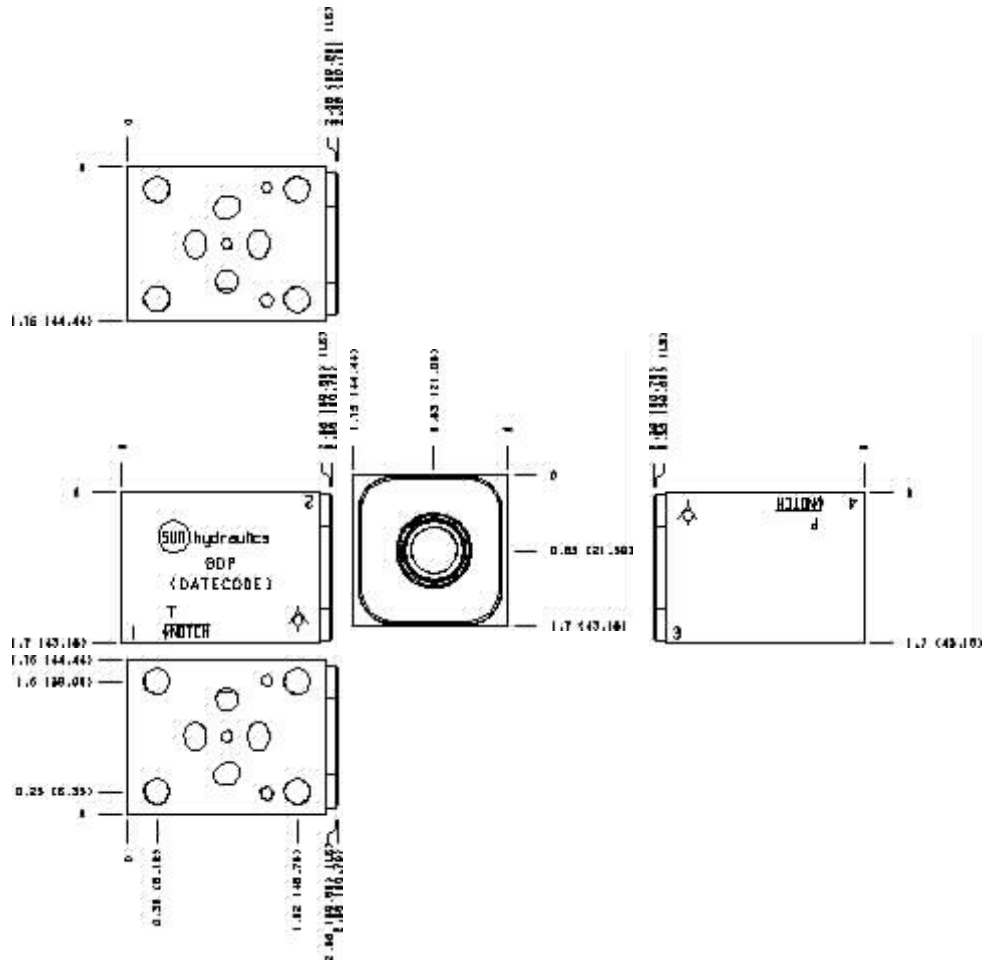
Functional Group:

Products : Manifolds : Sandwich : Check : ISO 03 : On P

Model:
GDP

Projection Type 

All Dimensions in Inches(mm)



Copyright © 2007-2008 Sun Hydraulics Corporation.
All rights reserved.

[Terms and Conditions](#) - [Statement of Privacy](#)