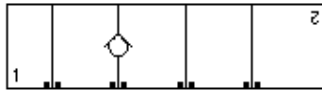
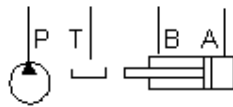


Check, On P



Check, On T



TECHNICAL DATA

Body Type	Sandwich
Interface	ISO 03
Body Features	Into P or out of T
Stack Height	1.75 in.
Open Cavities	1
Cavity	T-13A
Model Weight	1.45 lb.

CONFIGURATION

/S Modifier 65-45-12 Ductile Iron, Buna-N, Blackened

NOTES

- For check valve application, use only with CX*A check valves - free flow nose to side.
- **Important:** Carefully consider the maximum system pressure. The pressure rating of the manifold is dependent on the manifold material, with the port type/size a secondary consideration. Manifolds constructed of aluminum are not rated for pressures higher than 3000 psi (210 bar), regardless of the port type/size specified.

INCLUDED COMPONENTS

Part	Description	Quantity
500-001-012	O-Ring	4
700-002	Seal Plate	1
811-001-006	Pin	1

CONFIGURATION OPTIONS

Model Code Example: GDP/S

MODIFIER (S)

- /S** 65-45-12 Ductile Iron, Buna-N, Blackened
- 6061-T651 Aluminum, Buna-N
- /V** 6061-T651 Aluminum, Viton
- /Y** 65-45-12 Ductile Iron, Viton, Blackened