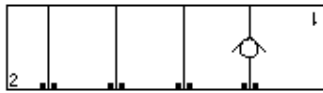
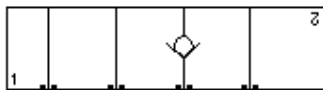


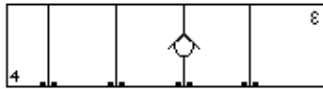
Check, On A, Free Flow into Valve



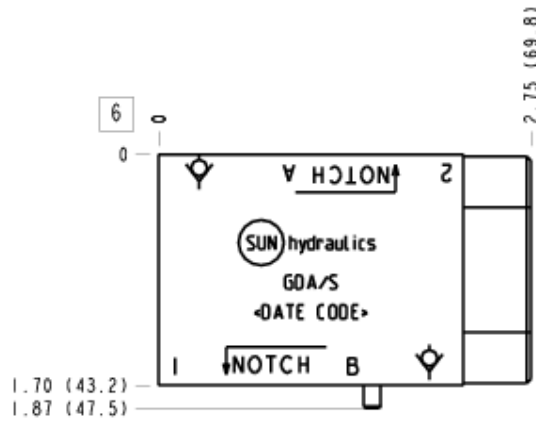
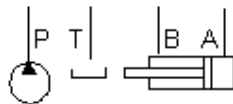
Check, On A, Free Flow Out Of Valve



Check, On B, Free Flow Into Valve



Check, On B, Free Flow Out Of Valve



TECHNICAL DATA

Body Type	Sandwich
Interface	ISO 03
Body Features	Flow into or out of workport A or B
Stack Height	1.75 in.
Seal Plate Included (see notes)	Yes
Open Cavities	1
Cavity	T-13A
Model Weight	1.69 lb.

CONFIGURATION

/S Modifier 65-45-12 Ductile Iron, Buna-N, Chem.
Black

NOTES

- Stack height value in technical data table includes seal retainer plate.
- For check valve application, use only with CX*A check valves - free flow nose to side.
- Important:** Carefully consider the maximum system pressure. The pressure rating of the manifold is dependent on the manifold material, with the port type/size a secondary consideration. Manifolds constructed of aluminum are not rated for pressures higher than 3000 psi (210 bar), regardless of the port type/size specified.

INCLUDED COMPONENTS

Part	Description	Quantity
500-001-012	O-Ring	4
700-002	Seal Plate	1
811-001-006	Pin	1

CONFIGURATION OPTIONS

Model Code Example: GDA/S

MODIFIER (S)

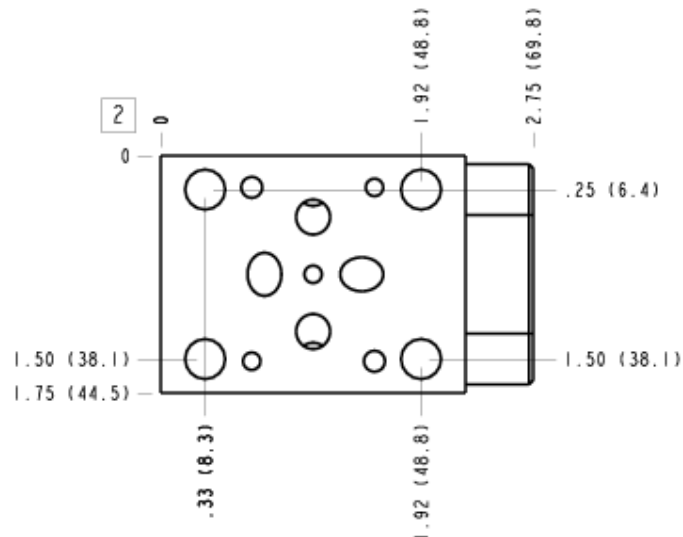
- /S** 65-45-12 Ductile Iron, Buna-N, Chem. Black
6061-T651 Aluminum, Buna-N
- /11** 6061-T651 Aluminum, Buna-N, Clear Anodize - Per MIL SPEC 8625F Type II, Class I
- /10** 6061-T651 Aluminum, Buna-N, Black Anodize - Per MIL SPEC 8625F Type II, Class II
- /V** 6061-T651 Aluminum, Viton
- /16** 6061-T651 Aluminum, Viton, Clear Anodize - Per MIL SPEC 8625F Type II, Class I
- /15** 6061-T651 Aluminum, Viton, Black Anodize - Per MIL SPEC 8625F Type II, Class II
- /S3** 65-45-12 Ductile Iron, Buna-N, Trivalent Clear Zinc with Top Sealer
- /Y** 65-45-12 Ductile Iron, Viton, Chem. Black
- /Y3** 65-45-12 Ductile Iron, Viton, Trivalent Clear Zinc with Top Sealer

MANIFOLD FACES

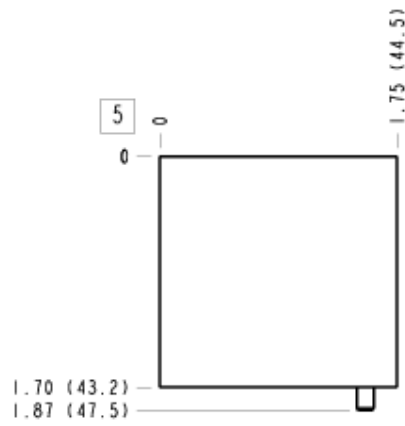
FACE GRID

1	2	3	4
5	6	7	8
9	10	11	12

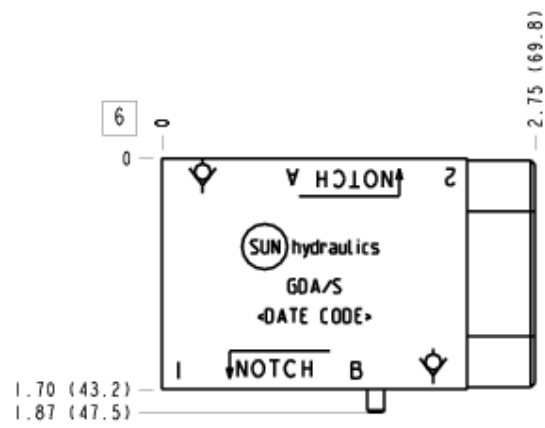
Face 2



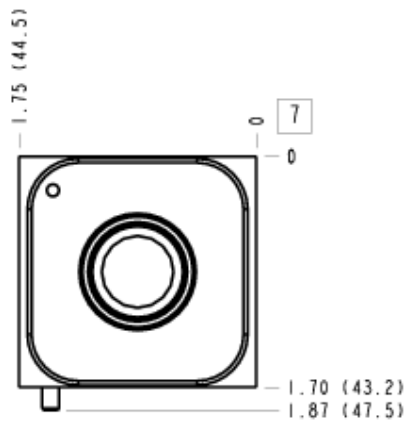
Face 5



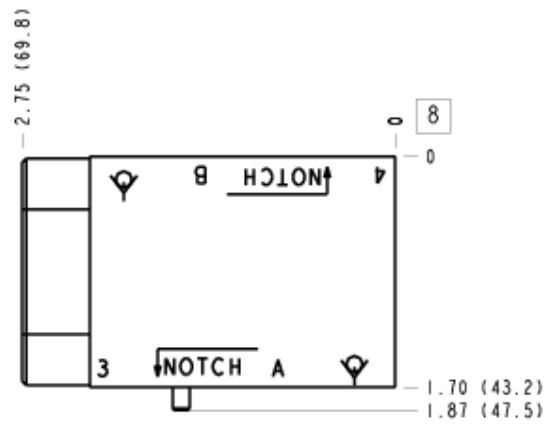
Face 6



Face 7



Face 8



Face 10

