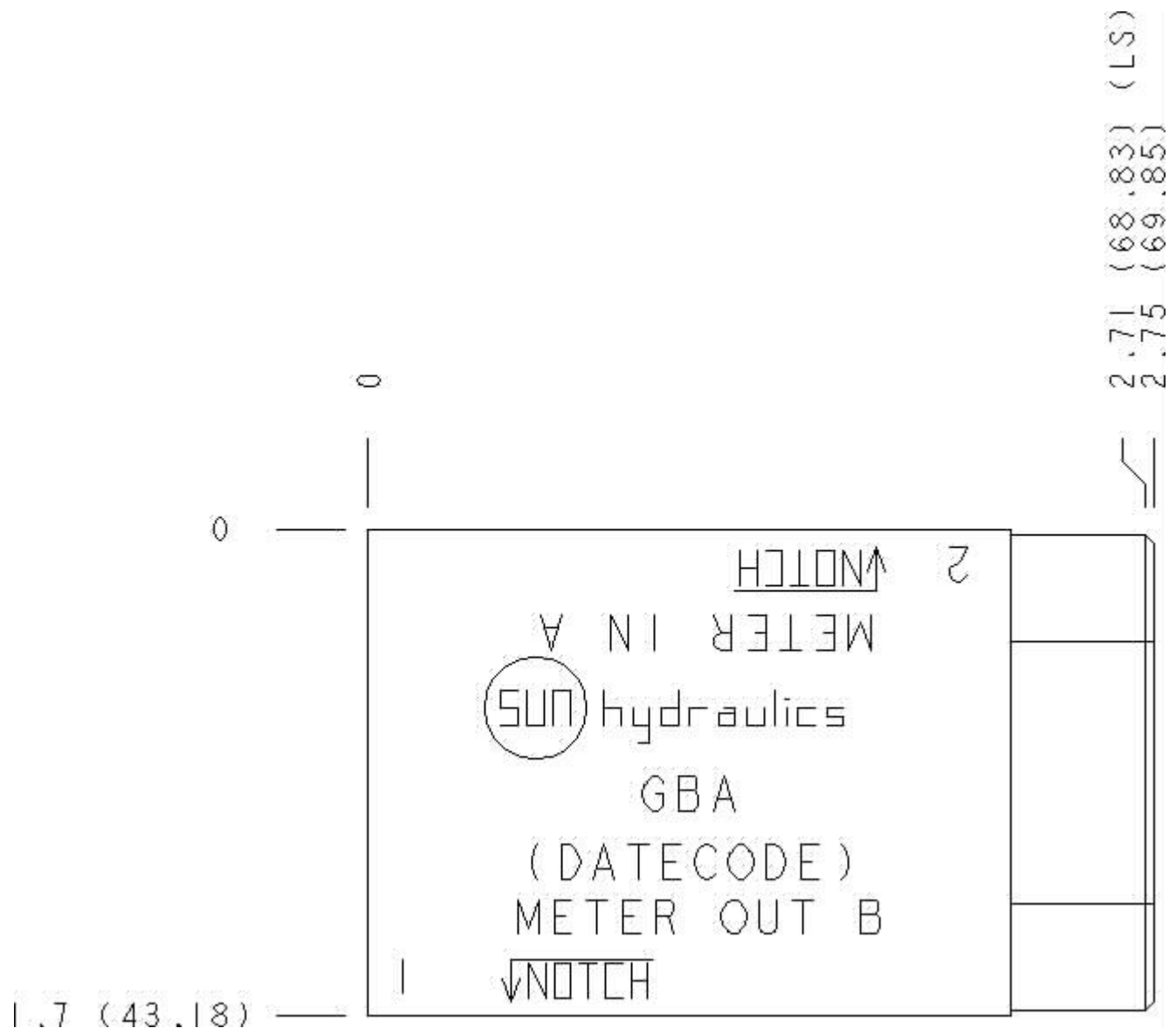


Functional Group:
 Products : Manifolds : Sandwich : Flow Control : ISO 03 : Meter in on A

Model:
 GBA

Face : 6



Cartridge extension measurement is to the centerline of the cartridge.

Aluminum Body Pressure Rating: **3000 psi (210 bar)**
 Ductile Iron Body Pressure Rating: **5000 psi (350 bar)**

Technical Data

	U.S. Units	Metric Units
--	------------	--------------

Model Weight	0.67 lb.	0.30 kg.
Cavity	T-13A	
Body Features	Flow into or out of workport A or B	
Body Type	Sandwich	
Interface	ISO 03	
Open Cavity Quantity	1	
Stack Height	1.75 in.	44,5 mm

Option Selection:

Model Code	Description
GBA	Aluminum, Buna-N, U.S. Units
GBA/S	Ductile Iron, Buna-N, U.S. Units
GBA/V	Aluminum, Viton, U.S. Units
GBA/Y	Ductile Iron, Viton, U.S. Units

Special Notes :

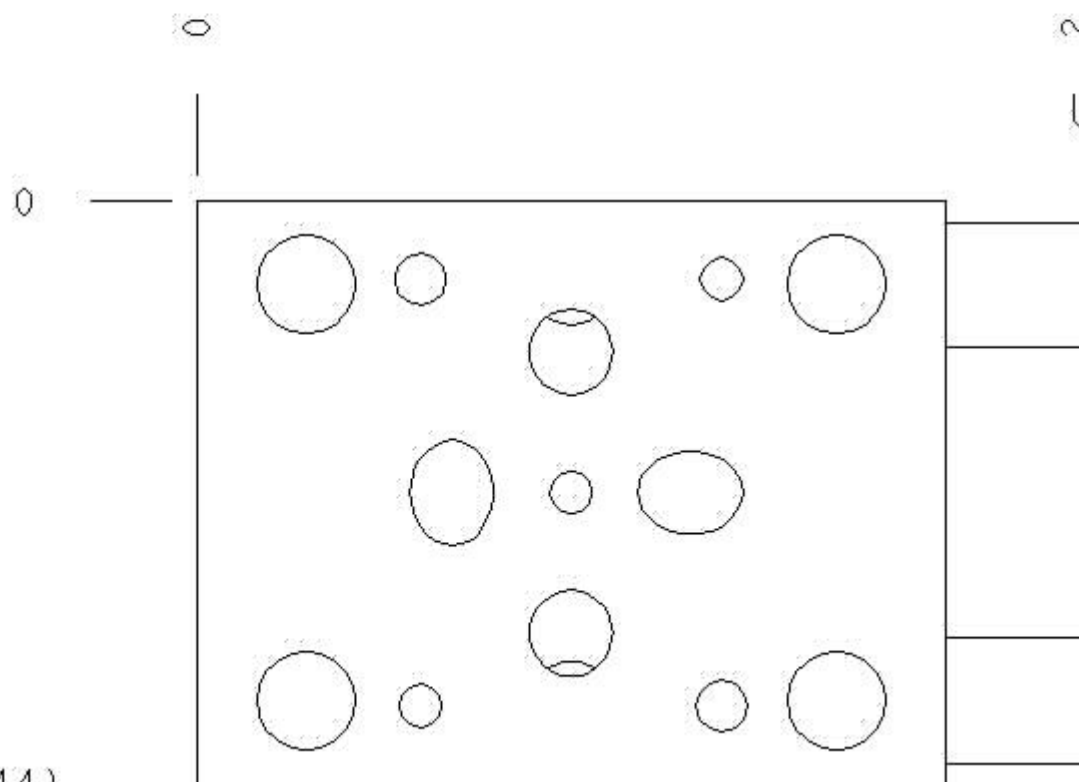
No Special Notes available for selected Model.



Functional Group:
Products : Manifolds : Sandwich : Flow Control : ISO 03 : Meter in on A

Model:
GBA

Face : 2



1.75 (44.44)

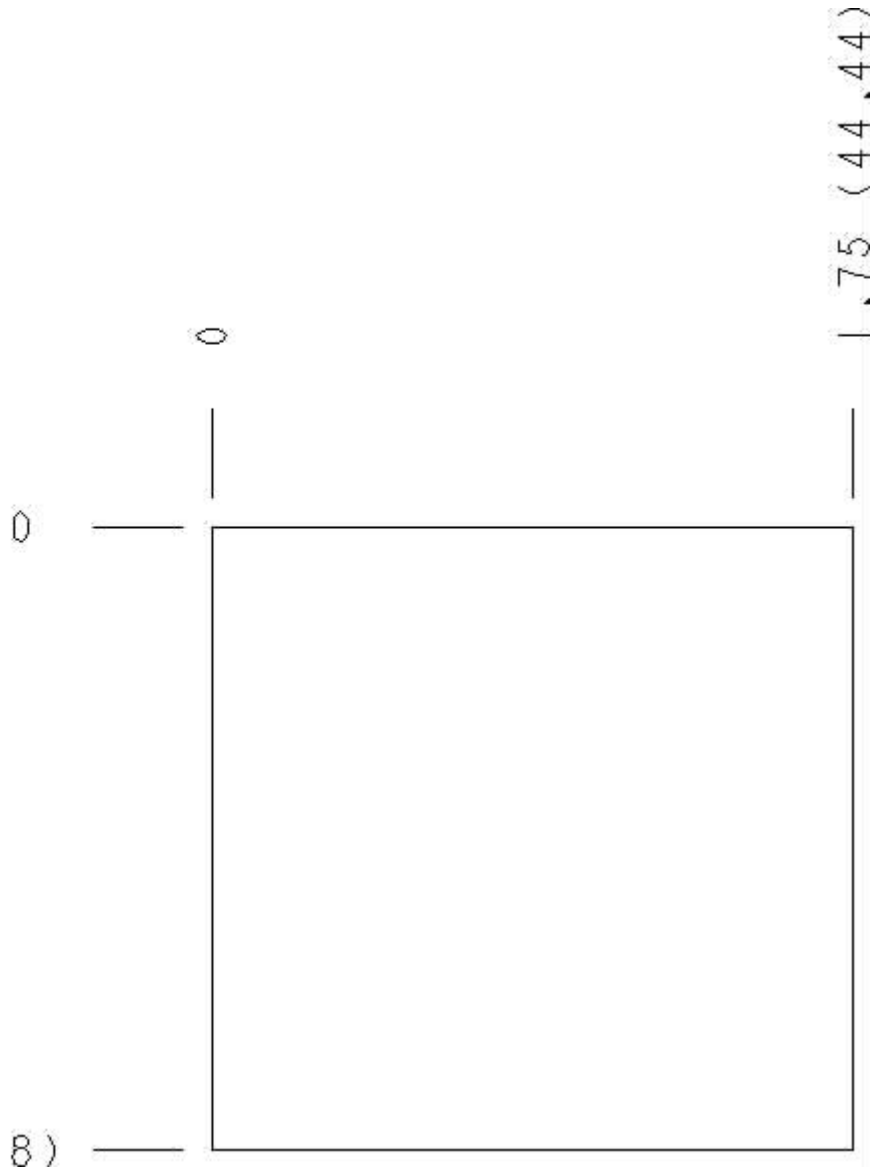
Cartridge extension measurement is to the centerline of the cartridge.



Functional Group:
Products : Manifolds : Sandwich : Flow Control : ISO 03 : Meter in on A

Model:
GBA

Face : 5



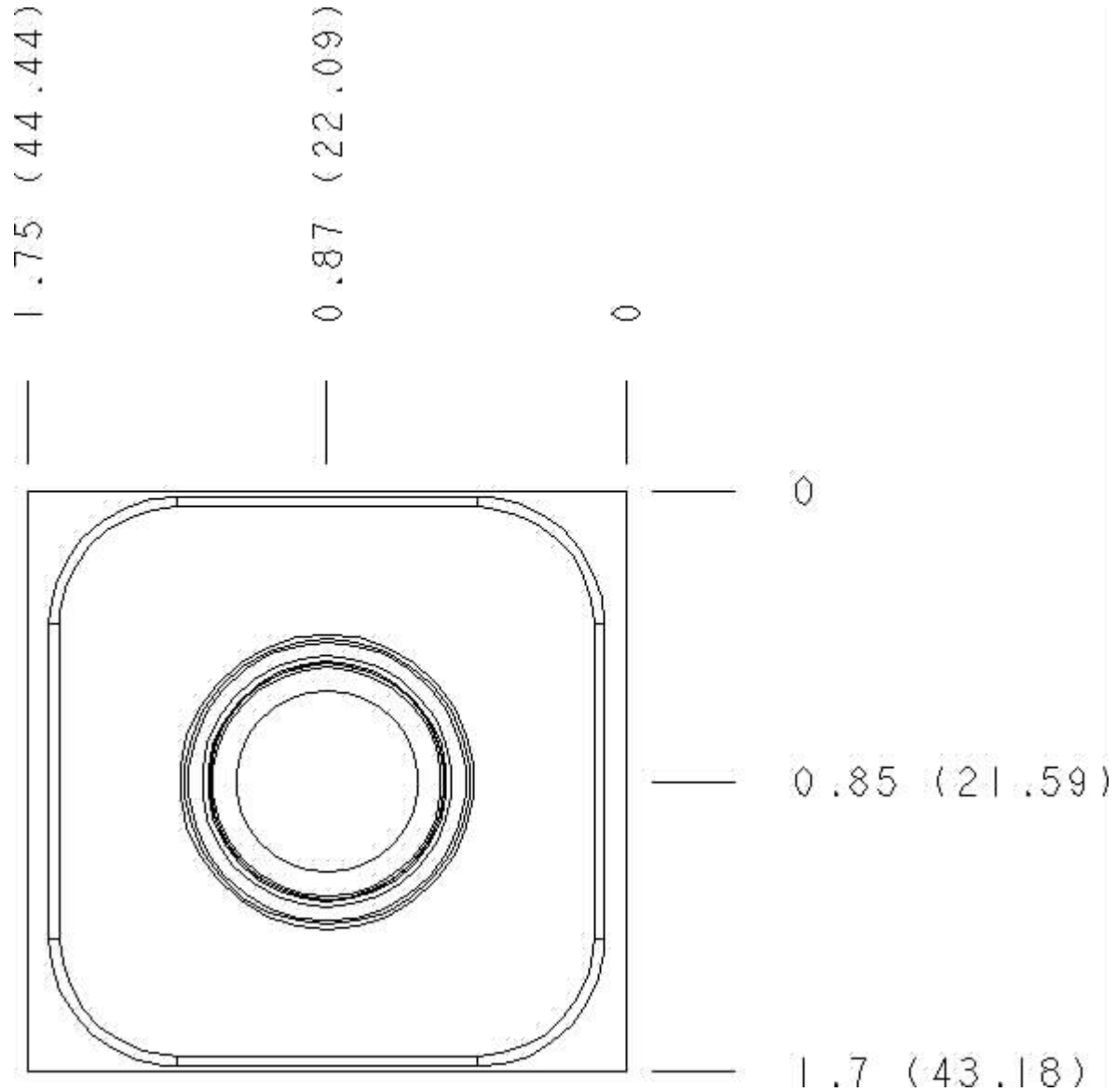
Cartridge extension measurement is to the centerline of the cartridge.



Functional Group:
Products : Manifolds : Sandwich : Flow Control : ISO 03 : Meter in on A

Model:
GBA

Face : 7



Cartridge extension measurement is to the centerline of the cartridge.



Functional Group:
 Products : Manifolds : Sandwich : Flow Control : ISO 03 : Meter in on A

Model:
 GBA

Face : 8

2.75 (69.85)
2.71 (68.83) (LS)



Cartridge extension measurement is to the centerline of the cartridge.

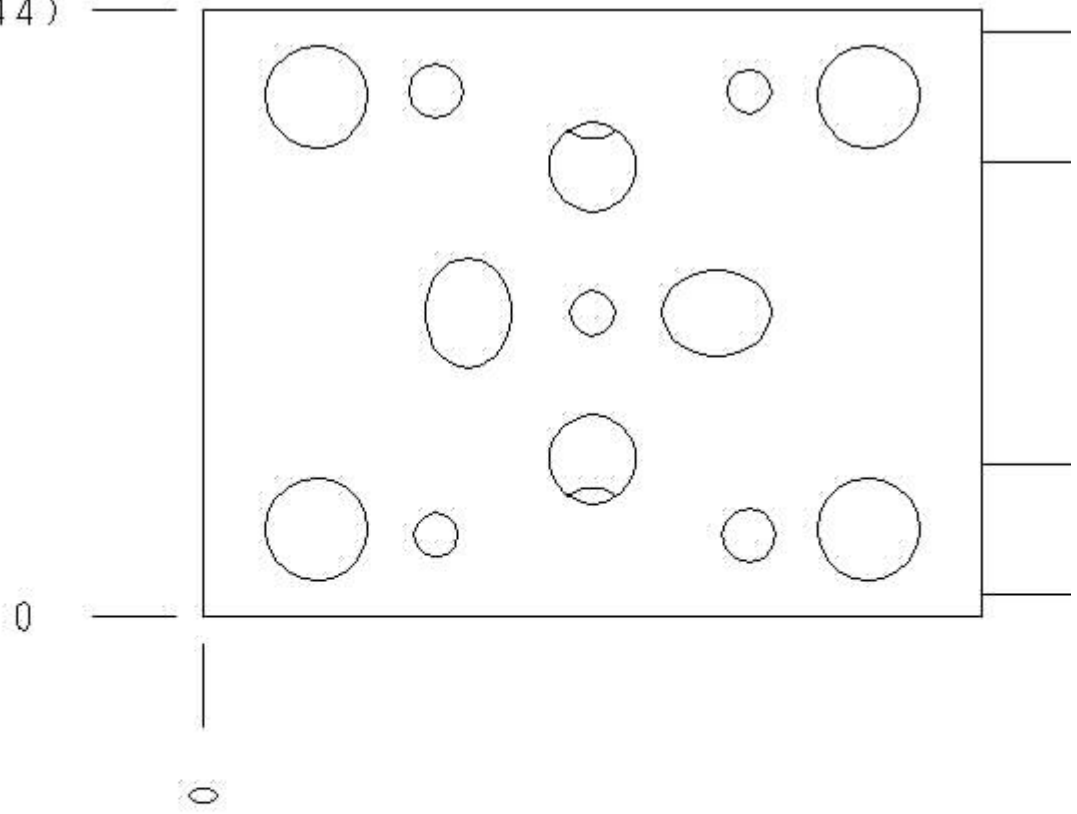


Functional Group:
Products : Manifolds : Sandwich : Flow Control : ISO 03 : Meter in on A

Model:
GBA

Face : 10

1.75 (44.44)



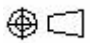
Cartridge extension measurement is to the centerline of the cartridge.



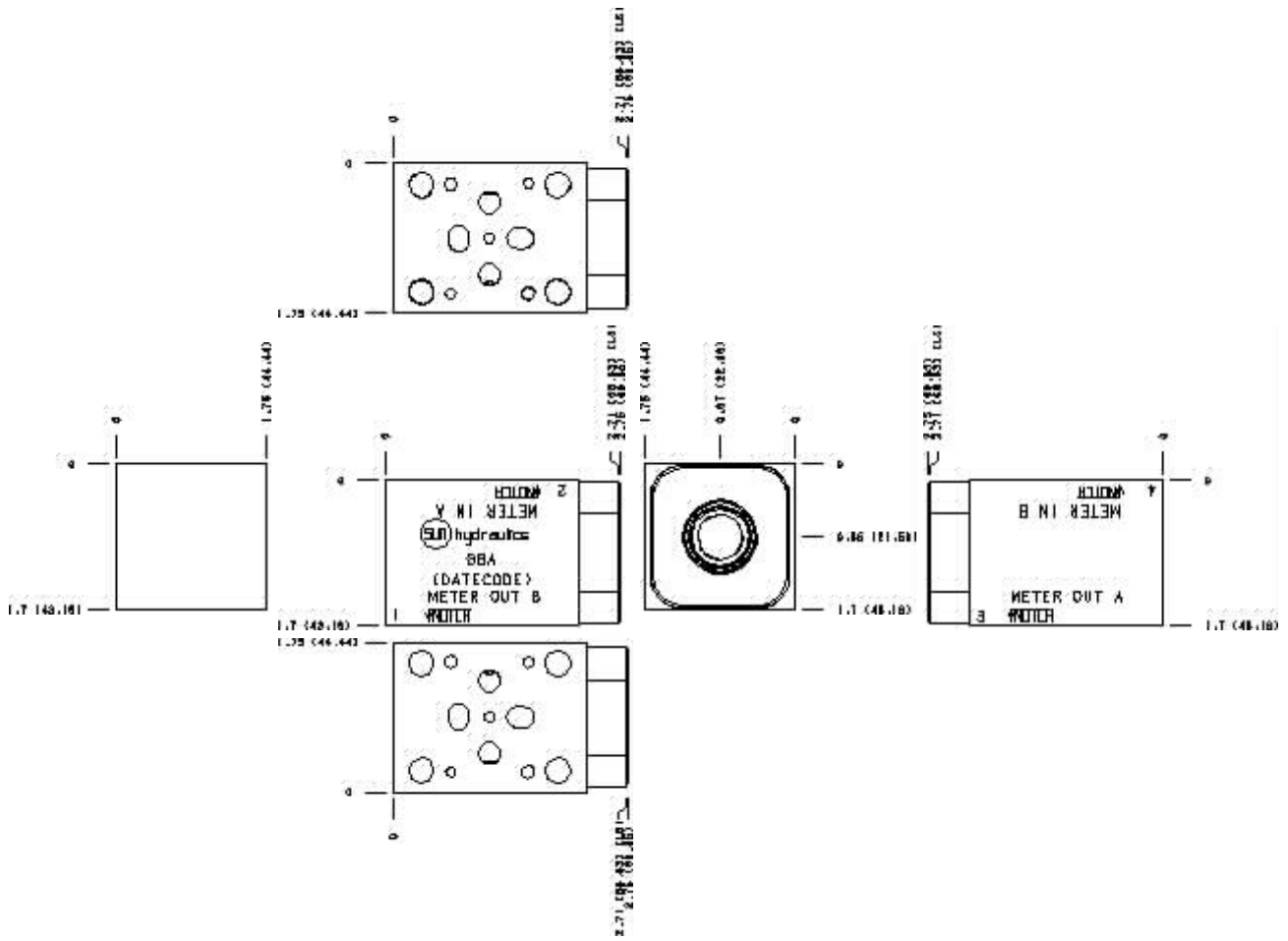
Functional Group:

Products : Manifolds : Sandwich : Flow Control : ISO
03 : Meter in on A

Model:
GBA

Projection Type 

All Dimensions in Inches(mm)



Copyright © 2007-2008 Sun Hydraulics Corporation.
All rights reserved.

[Terms and Conditions](#) - [Statement of Privacy](#)