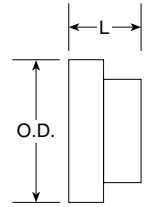


Cap Assembly Insert

FS0304-C Series

Used with FS0318



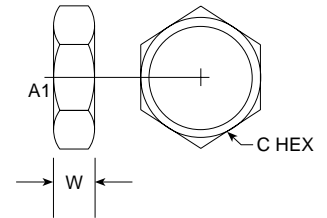
SAE # 520112

PART NO. SIZE	TUBE O.D.	O.D.	M.M.	L LGTH	M.M.	Standard Material From Stock			
						S	FG	SS	B
FS0304-C-04	1/4	0.502	12.75	0.340	8.64	•			
FS0304-C-06	3/8	0.620	15.75	0.370	9.40	•			
FS0304-C-08	1/2	0.745	18.92	0.470	11.94	•			
FS0304-C-10	5/8	0.923	23.44	0.470	11.94	•			
FS0304-C-12	3/4	1.097	27.86	0.530	13.46	•			
FS0304-C-16	1	1.347	34.21	0.590	14.99	•			
FS0304-C-20	1 1/4	1.597	40.56	0.590	14.99	•			
FS0304-C-24	1 1/2	1.910	48.51	0.590	14.99	•			

Bulkhead Lock Nut

FS0306 Series

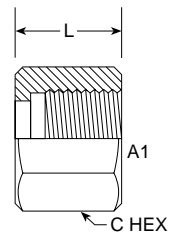
SAE # 520118



PART NO. SIZE	TUBE O.D.	A1 THREAD	C HEX	M.M.	W WIDTH	M.M.	Standard Material From Stock			
							S	FG	SS	B
FS0306-04	1/4	9/16-18	13/16	20.64	0.270	6.86	•			
FS0306-06	3/8	11/16-16	1	25.40	0.310	8.13	•			
FS0306-08	1/2	13/16-16	1 1/8	28.58	0.350	8.89	•			
FS0306-10	5/8	1-14	1 5/16	33.34	0.410	10.41	•			
FS0306-12	3/4	1 3/16-12	1 1/2	38.10	0.410	10.41	•			
FS0306-16	1	1 7/16-12	1 3/4	44.45	0.410	10.41	•			
FS0306-20	1 1/4	1 11/16-12	2	50.80	0.410	10.41	•			
FS0306-24	1 1/2	2-12	2 3/8	60.33	0.410	10.41	•			

Nut FS0318 Series

SAE # 520110



PART NO. SIZE	TUBE O.D.	A1 THREAD	C HEX	M.M.	L LGTH	M.M.	Standard Material From Stock			
							S	FG	SS	B
FS0318-04	1/4	9/16-18	11/16	17.46	0.580	14.73	•			
FS0318-06	3/8	11/16-16	13/16	20.63	0.670	17.02	•			
FS0318-08	1/2	13/16-16	15/16	23.81	0.830	21.08	•			
FS0318-10	5/8	1-14	1-1/8	28.58	0.930	23.62	•			
FS0318-12	3/4	1 4/16-12	1-3/8	34.93	1.024	26.01	•			
FS0318-16	1	1 7/16-12	1-5/8	41.28	1.100	27.94	•			
FS0318-20	1 1/4	1 11/16-12	1-7/8	47.64	1.100	27.94	•			
FS0318-24	1 1/2	2-12	2-1/4	57.15	1.100	27.94	•			