

TECHNICAL DATA

Body Type	Line mount
Interface	None
Body Features	Through port
Mounting Hole Thread	.250-20 UNC - 2B in.
Mounting Hole Depth	.50 in.
Mounting Hole Quantity	2
Open Cavities	1
Cavity	T-10A
Port Size	SAE 8
Model Weight	0.64 lb.

NOTES

Important: Carefully consider the maximum system pressure. The pressure rating of the manifold is dependent on the manifold material, with the port type/size a secondary consideration. Manifolds constructed of aluminum are not rated for pressures higher than 3000 psi (210 bar), regardless of the port type/size specified.

PORT DESIGNATORS

Modifiers	Ports
FGJ	All Ports: SAE 8;

CONFIGURATION OPTIONS

Model Code Example: FGJ

MODIFIER

- 6061-T651 Aluminum, Buna-N
- /S 65-45-12 Ductile Iron, Buna-N, Blackened

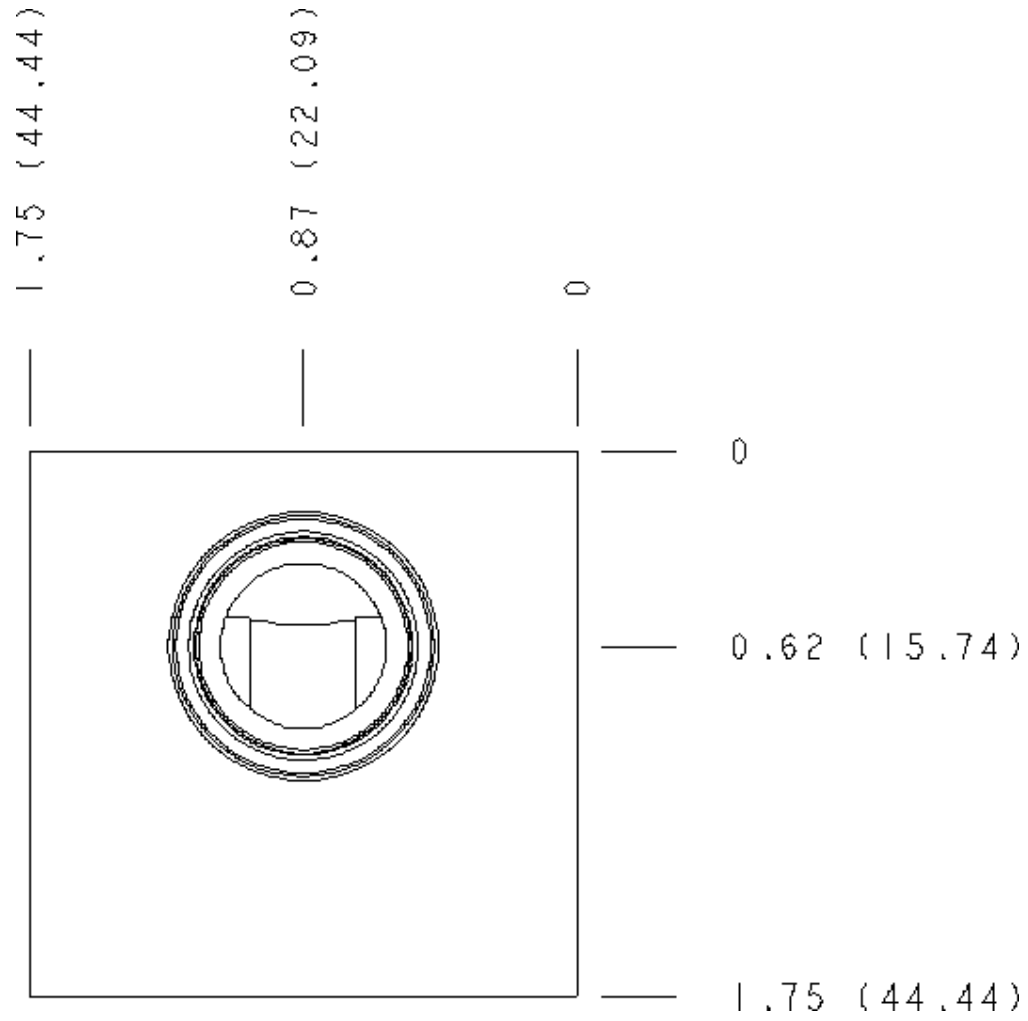
MANIFOLD FACES

FACE GRID



5	6	7	8
9	10	11	12

Face 2



Face 5

2.71 2.75 (69.85)
(68.83) (LS)

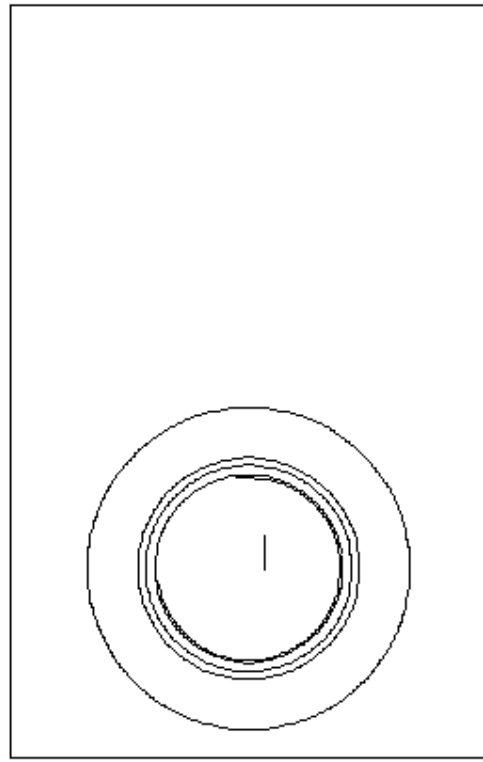
0.68 (17.27)

0

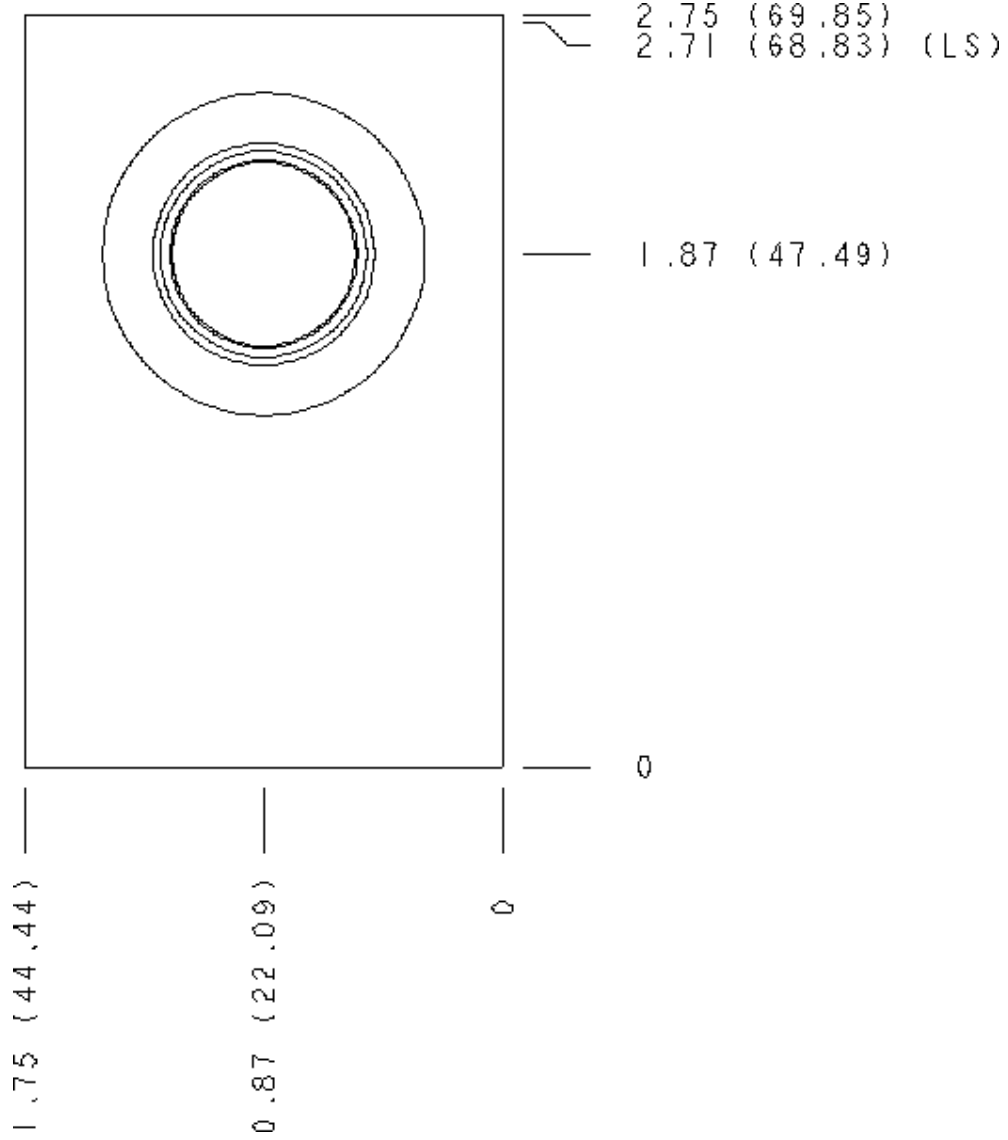
0

0.87 (22.09)

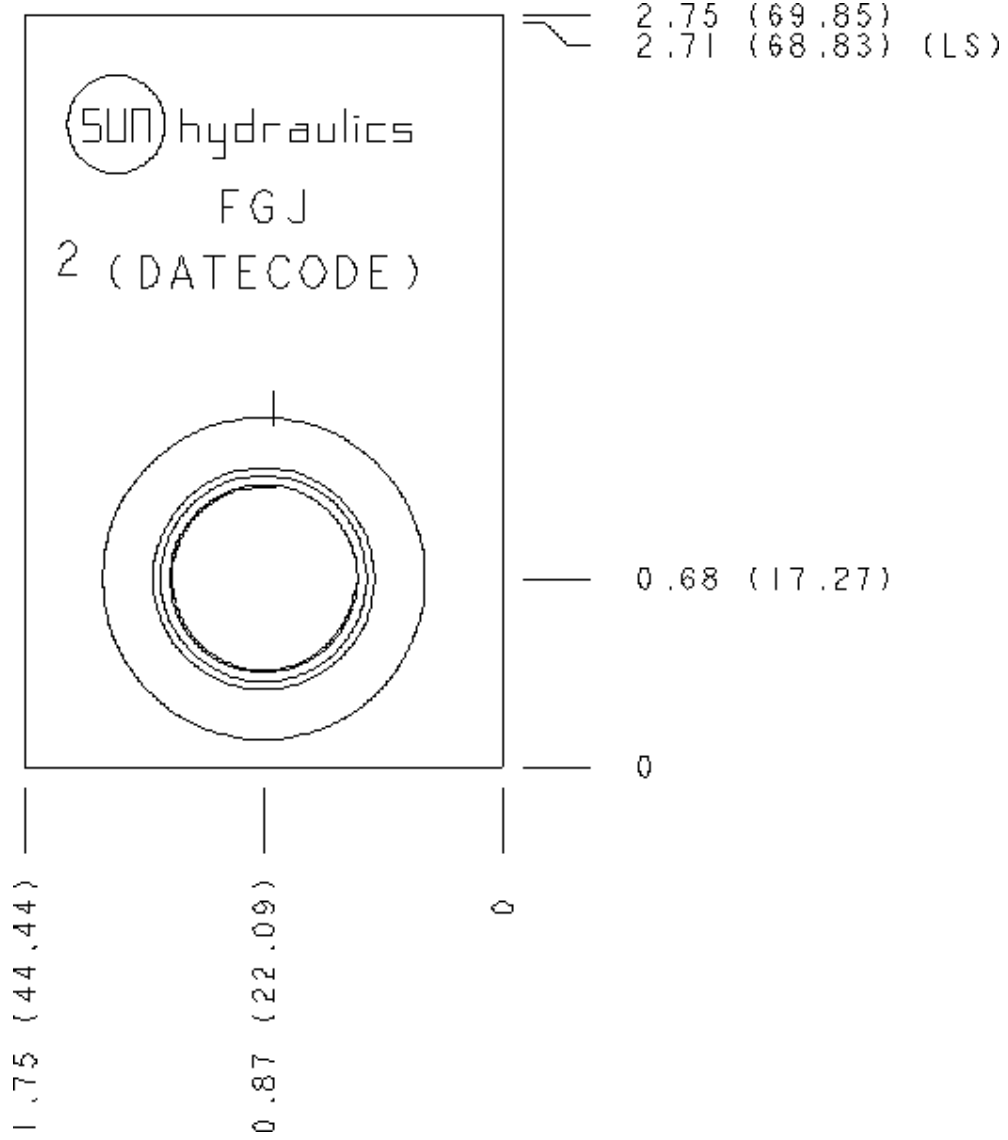
1.75 (44.44)



Face 6



Face 7



Face 8

2.71 (68.83) (LS) ———
2.75 (69.85)

1.31 (33.27) ———

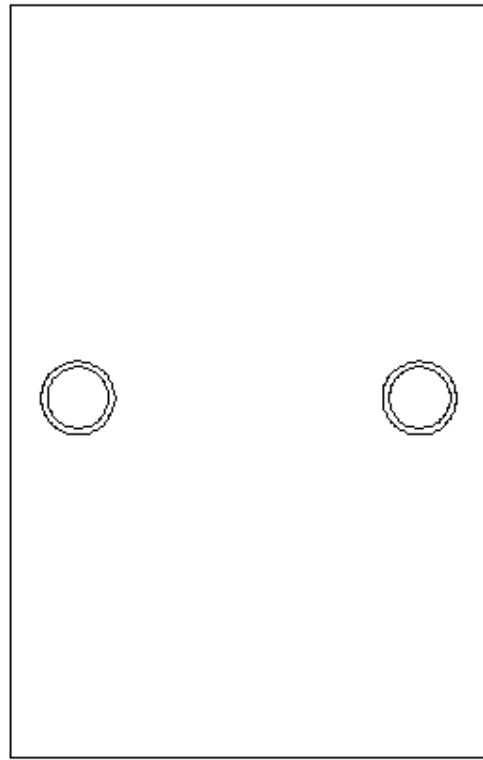
0 ———

0 ———

0.25 (6.35) ———

1.5 (38.09) ———

1.75 (44.44) ———



Face 10

