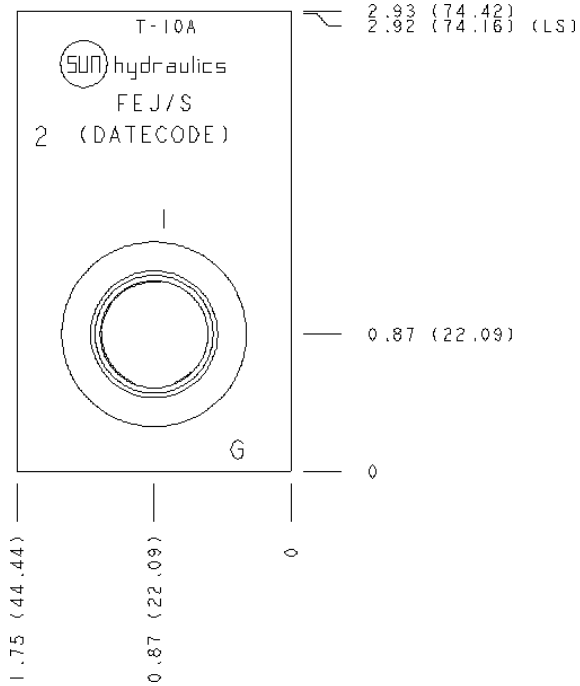


CONFIGURATION

/S Modifier 65-45-12 Ductile Iron, Buna-N, Blackened



TECHNICAL DATA

Body Type	Line mount
Interface	None
Body Features	Through port with gauge port
Mounting Hole Thread	.250-20 UNC - 2B in.
Mounting Hole Depth	.50 in.
Mounting Hole Quantity	2
Open Cavities	1
Cavity	T-10A
Port Size	SAE 8
Model Weight	1.79 lb.

NOTES

Important: Carefully consider the maximum system pressure. The pressure rating of the manifold is dependent on the manifold material, with the port type/size a secondary consideration. Manifolds constructed of aluminum are not rated for pressures higher than 3000 psi (210 bar), regardless of the port type/size specified.

PORT DESIGNATORS

Modifiers	Ports
FEJ	Ports 1 & 2: SAE 8; Gage Ports: 1/4" NPTF;

CONFIGURATION OPTIONS
Model Code Example: FEJ/S

MODIFIER _____ **(/S)**
/S 65-45-12 Ductile Iron, Buna-N, Blackened
 6061-T651 Aluminum, Buna-N

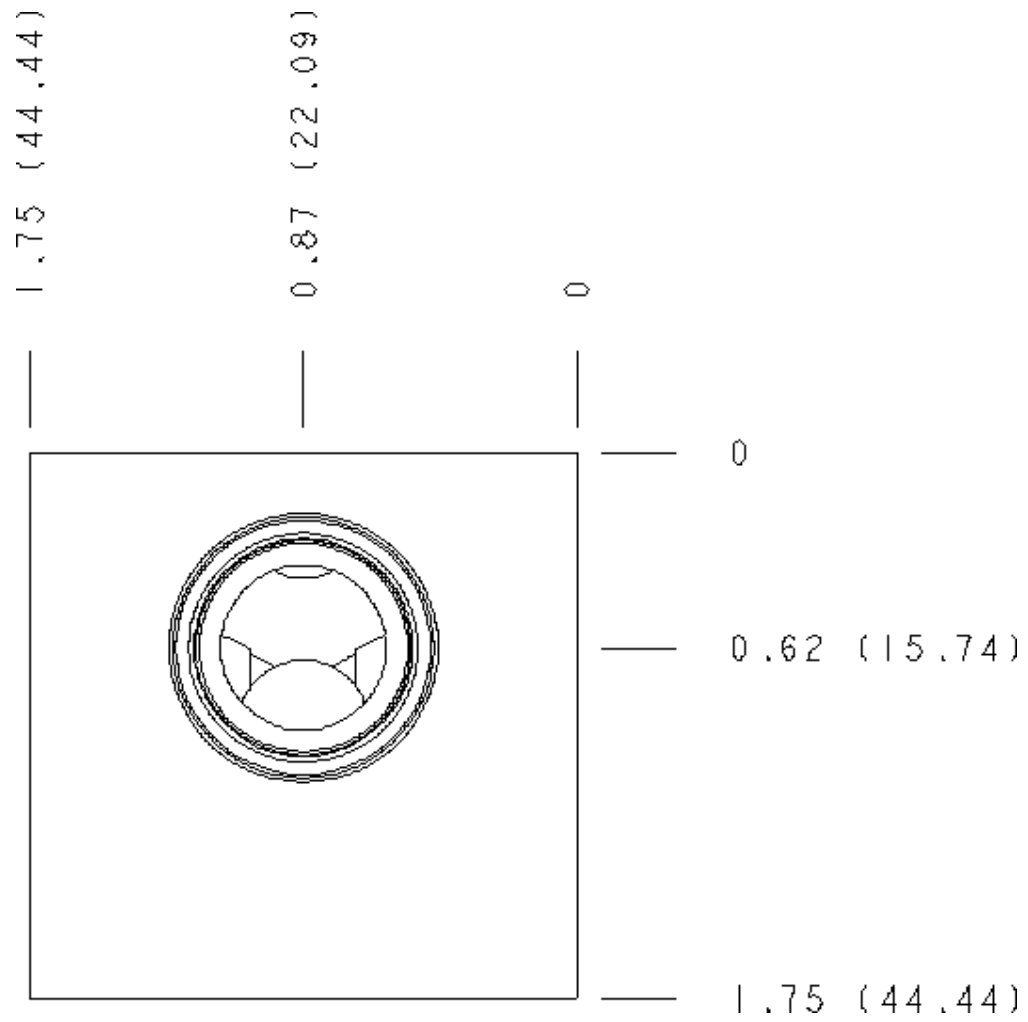
MANIFOLD FACES

FACE GRID



5	6	7	8
9	10	11	12

Face 2



Face 5

2.93 (74.42)
2.92 (74.16) (LS)

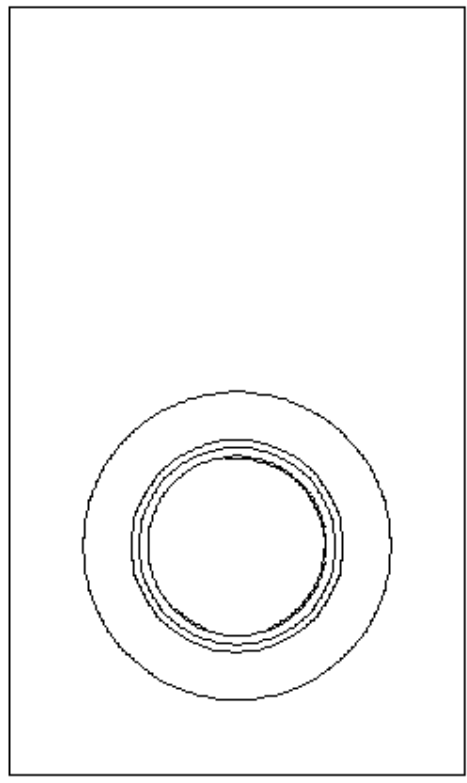
0.87 (22.09)

0

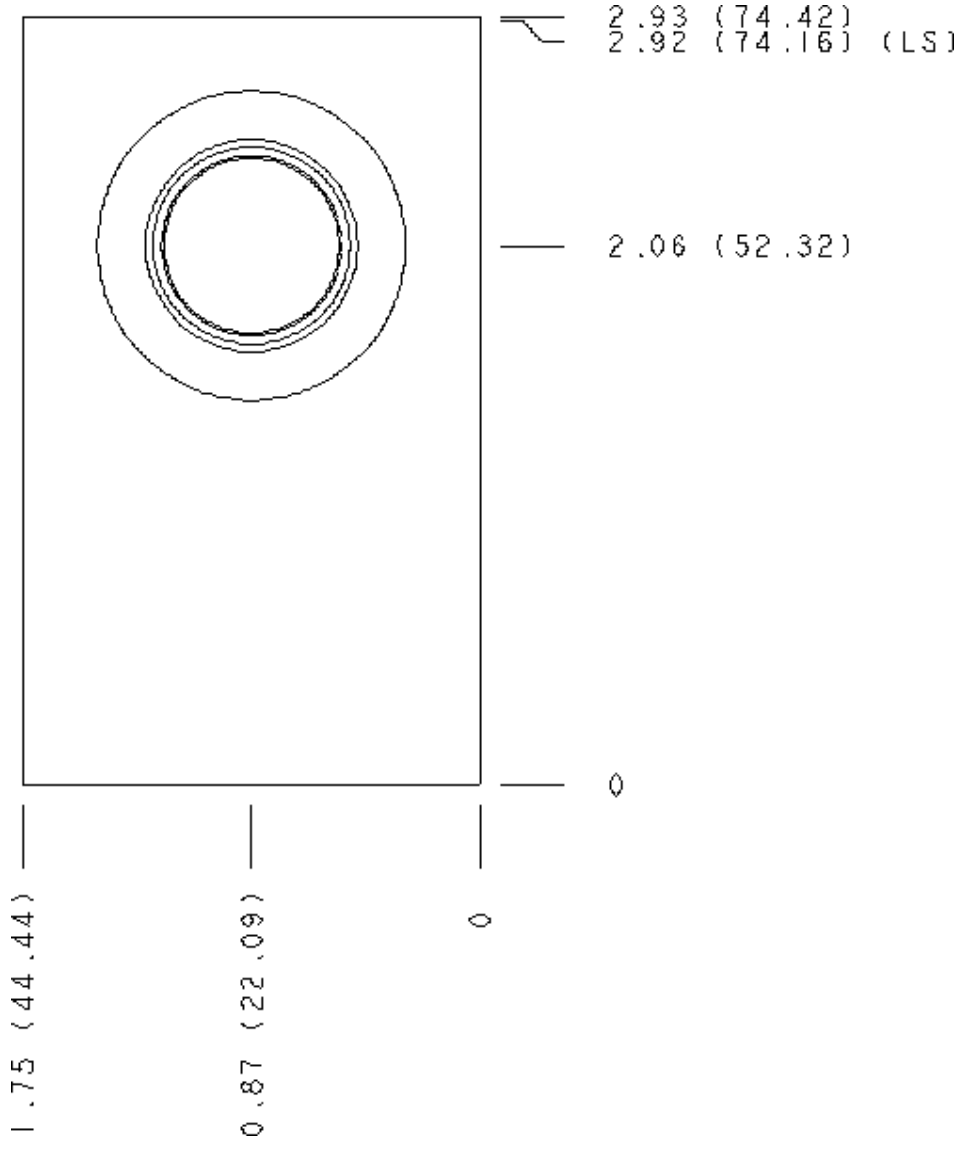
0

0.87 (22.09)

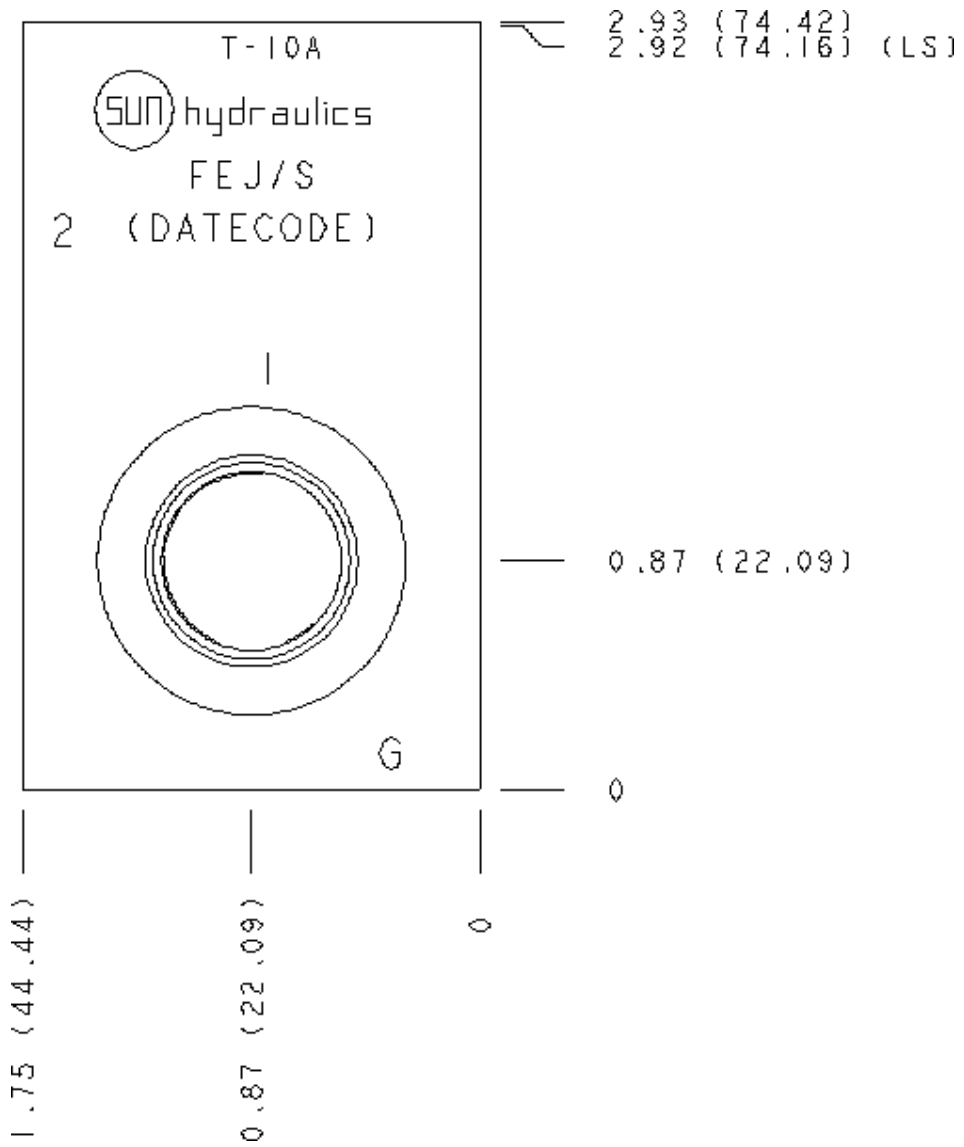
1.75 (44.44)



Face 6



Face 7



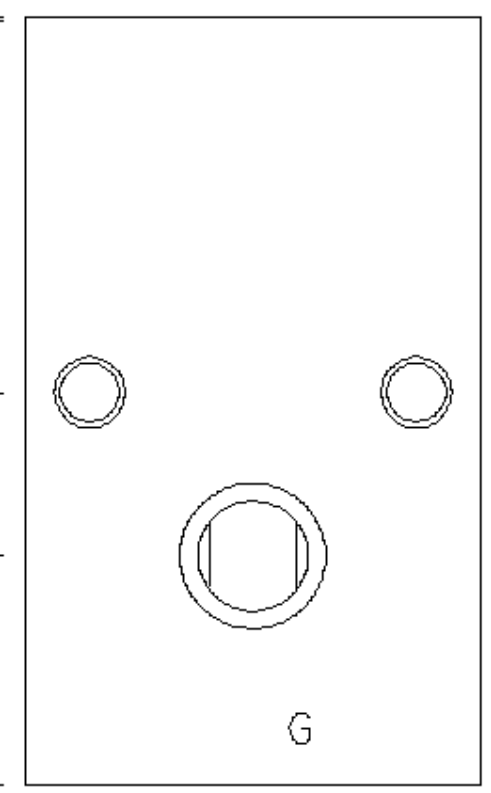
Face 8

2.93 (74.42)
2.92 (74.16) (LS)

1.5 (38.09)

0.87 (22.09)

0



0

0.25 (6.35)

0.87 (22.09)

1.5 (38.09)

1.75 (44.44)

Face 10

