

Fully adjustable pressure compensated flow control valve with reverse flow check

Capacity:
50 gpm (200 L/min.)

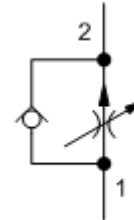
Functional Group:

Products : Cartridges : Flow Control : 2 Port : Fully Adjustable, Pressure Compensated, with Reverse Flow Check

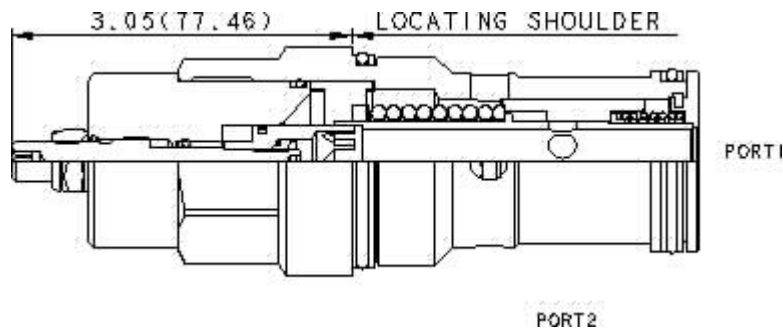
Model:
FDFA-LAN

Product Description

Fully adjustable, pressure-compensated flow controls with reverse-flow check provide precise flow regulation for meter-in or meter-out applications where there may be wide pressure fluctuations. They are infinitely adjustable from nearly closed up to the maximum flow. An integral high-capacity check valve provides unrestricted flow from port 2 to port 1.



[Download](#)

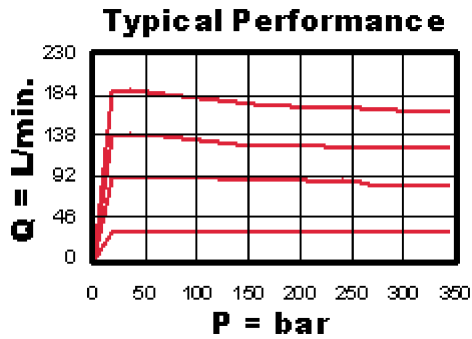
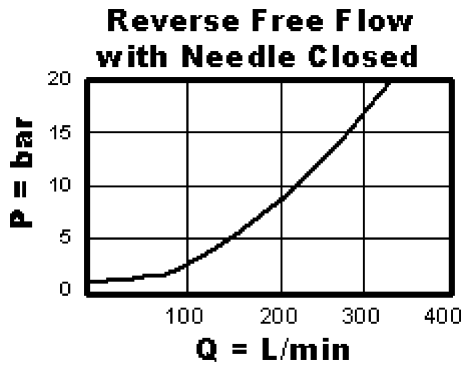
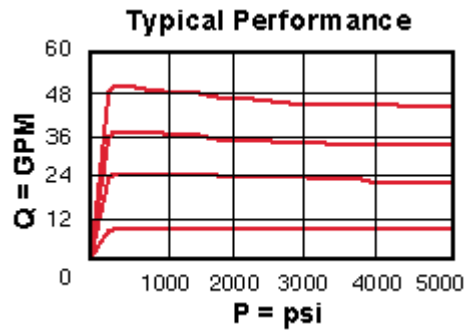
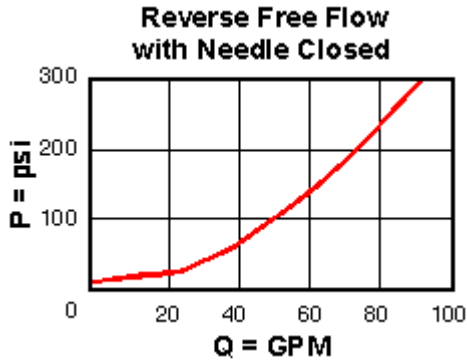


Technical Features

- All 2-port flow control cartridges are physically and functionally interchangeable (i.e. same flow path, same cavity for a given frame size). However, cartridge extension dimensions from the mounting surface may vary.
- Accurate pressure compensated control requires that a 200 psi (14 bar) minimum pressure differential be maintained across the valve.
- A balanced adjustment mechanism allows for easy adjustment even at high pressures.
- The sharp-edged orifice design minimizes flow variations due to viscosity changes.

Technical Data

	U.S. Units	Metric Units
Cavity		T-18A
Capacity	50 gpm	200 L/min.
Adjustment - Number of Counterclockwise Turns - Fully Closed to Fully Open		5
Maximum Operating Pressure	5000 psi	350 bar
Series (from Cavity)		Series 4
U.S. Patent #		4,630,640
Valve Hex Size	1 5/8 in.	41,3 mm
Valve Installation Torque	350 - 375 lbf ft	465 - 500 Nm
Adjustment Screw Hex Socket Size	5/32 in.	4 mm
Adjustment Nut Hex Size	9/16 in.	15 mm
Adjustment Nut Torque	108 lbf in.	12 Nm
Model Weight	3.30 lb	1,50 kg



FDFA-LAN

Control

Adjustment Range

External Material/Seal Material

L Standard Screw Adjustment +0.00 A .2 - 50 gpm (1 - 200 L/min.) +0.00 N Buna-N +0.00

Stainless material/seal options not available for this model

Customer specified setting stamped on hex \$1.10

- Explanation of Sun cartridge control options - US units.
- Explanation of Sun cartridge control options - metric units.