

## Fully adjustable pressure compensated flow control valve with reverse flow check

Capacity:  
25 gpm (95  
L/min.)

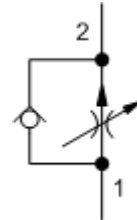
Functional Group:

Products : Cartridges : Flow Control : 2 Port : Fully Adjustable, Pressure Compensated, with Reverse Flow Check

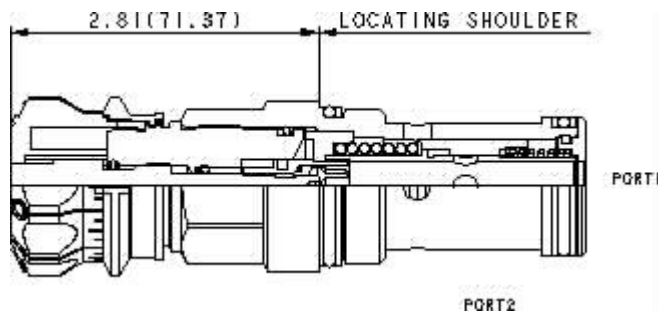
Model:  
FDEA-HAN

### Product Description

Fully adjustable, pressure-compensated flow controls with reverse-flow check provide precise flow regulation for meter-in or meter-out applications where there may be wide pressure fluctuations. They are infinitely adjustable from nearly closed up to the maximum flow. An integral high-capacity check valve provides unrestricted flow from port 2 to port 1.



[Download](#)

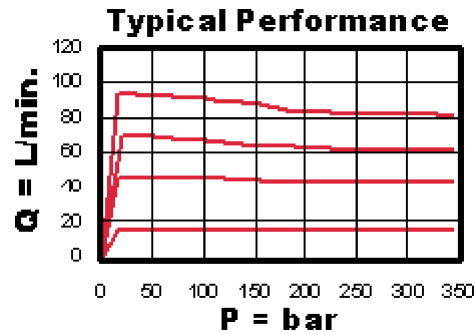
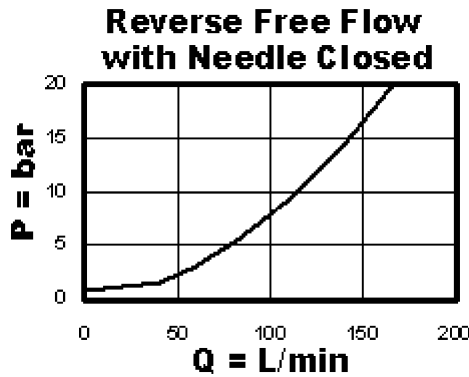
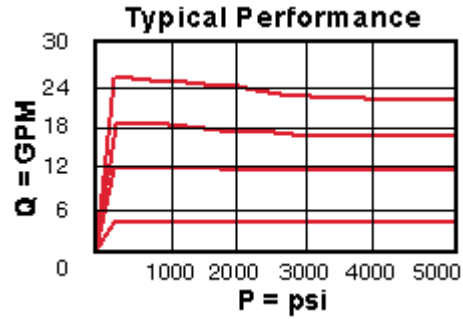
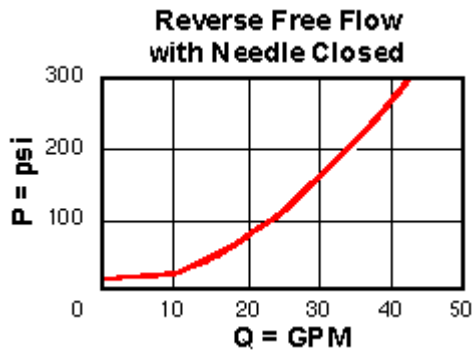


### Technical Features

- All 2-port flow control cartridges are physically and functionally interchangeable (i.e. same flow path, same cavity for a given frame size). However, cartridge extension dimensions from the mounting surface may vary.
- Accurate pressure compensated control requires that a 200 psi (14 bar) minimum pressure differential be maintained across the valve.
- A balanced adjustment mechanism allows for easy adjustment even at high pressures.
- The sharp-edged orifice design minimizes flow variations due to viscosity changes.

### Technical Data

	U.S. Units	Metric Units
Cavity	T-16A	
Capacity	25 gpm	95 L/min.
Adjustment - Number of Counterclockwise Turns - Fully Closed to Fully Open	5	
Maximum Operating Pressure	5000 psi	350 bar
Series (from Cavity)	Series 3	
U.S. Patent #	4,630,640	
Valve Hex Size	1 1/4 in.	31,8 mm
Valve Installation Torque	150 - 160 lbf ft	200 - 215 Nm
Adjustment Screw Hex Socket Size	5/32 in.	4 mm
Adjustment Nut Hex Size	9/16 in.	15 mm
Adjustment Nut Torque	108 lbf in.	12 Nm
Model Weight	1.25 lb	0,60 kg



### FDEA-HAN

Control

Adjustment Range

External Material/Seal Material

H	Calibrated Handknob with Detent Lock	+8.00	A	.2 - 25 gpm (1 - 95 L/min.)	+0.00	N	Buna-N	+0.00
---	--------------------------------------	-------	---	-----------------------------	-------	---	--------	-------

Stainless material/seal options not available for this model

Customer specified setting stamped on hex \$1.10

- Explanation of Sun cartridge control options - US units.
- Explanation of Sun cartridge control options - metric units.