

Fully adjustable pressure compensated flow control valve with reverse flow check

Capacity:
6 gpm (23 L/min.)

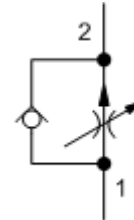
Functional Group:

Products : Cartridges : Flow Control : 2 Port : Fully Adjustable, Pressure Compensated, with Reverse Flow Check

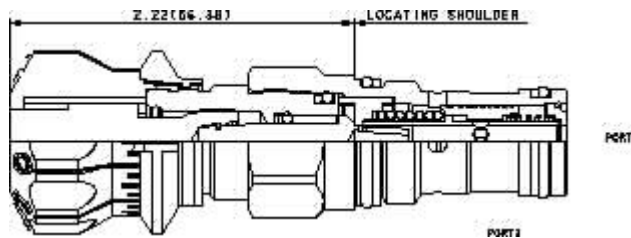
Model:
FDBA-HAN

Product Description

Fully adjustable, pressure-compensated flow controls with reverse-flow check provide precise flow regulation for meter-in or meter-out applications where there may be wide pressure fluctuations. They are infinitely adjustable from nearly closed up to the maximum flow. An integral high-capacity check valve provides unrestricted flow from port 2 to port 1.



[Download](#)

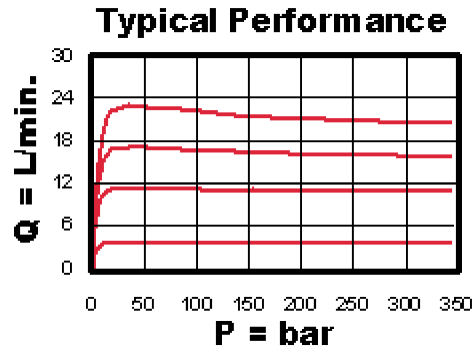
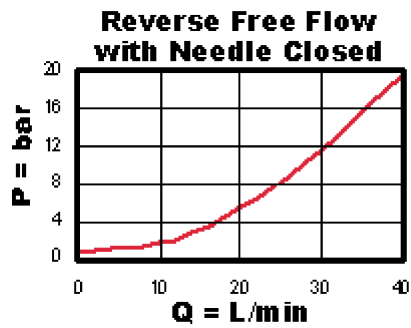
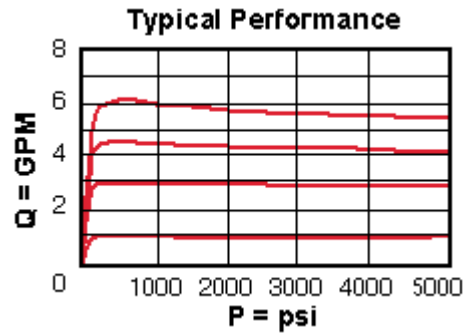
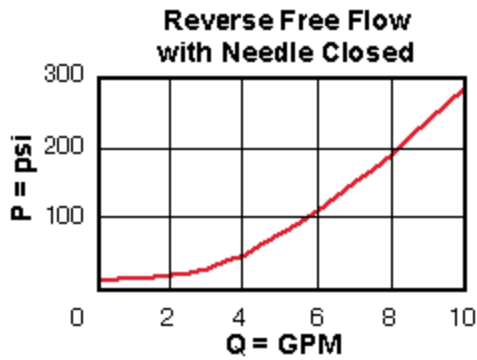


Technical Features

- All 2-port flow control cartridges are physically and functionally interchangeable (i.e. same flow path, same cavity for a given frame size). However, cartridge extension dimensions from the mounting surface may vary.
- Accurate pressure compensated control requires that a 200 psi (14 bar) minimum pressure differential be maintained across the valve.
- A balanced adjustment mechanism allows for easy adjustment even at high pressures.
- The sharp-edged orifice design minimizes flow variations due to viscosity changes.

Technical Data

	U.S. Units	Metric Units
Model Weight	0.39 lb.	0.18 kg.
Cavity	T-13A	
Capacity	6 gpm	23 L/min.
Adjustment - Number of Counterclockwise Turns - Fully Closed to Fully Open	5	
Maximum Operating Pressure	5000 psi	350 bar
Series (from Cavity)	Series 1	
U.S. Patent #	4,630,640	
Valve Hex Size	7/8 in.	22,2 mm
Valve Installation Torque	30 - 35 lbf ft	45 - 50 Nm
Adjustment Screw Hex Socket Size	5/32 in.	4 mm
Adjustment Nut Hex Size	9/16 in.	15 mm
Adjustment Nut Torque	108 lbf in.	12 Nm
Seal Kits	Buna: 990-010-007	
Seal Kits	Viton: 990-010-006	



FDBA-HAN

Control

Adjustment Range

External Material/Seal Material

H Calibrated Handknob with Detent Lock +8.00 A .1 - 6 gpm (0,4 - 23 L/min.) +0.00 N Buna-N +0.00

Stainless material/seal options not available for this model

* Special Setting required, specify at time of order
Customer specified setting stamped on hex \$1.10

- Explanation of Sun cartridge control options - US units.
- Explanation of Sun cartridge control options - metric units.

Copyright © 2007-2008 Sun Hydraulics Corporation. All rights reserved.
Terms and Conditions - ISO Certification - Statement of Privacy