

Accessories & Assembly Instructions Index

Alphabetical Index

DESCRIPTION	PAGES
Assembly Equipment	
Crimp	327-331
Reusable	332-336
Assembly Instructions	309-326
Cut Off Equipment	337-339
Proof Test Equipment	341-342
Skiving Equipment	340

Part Number Index

DESCRIPTION	PAGES	PART #	PG.	PART #	PG.	PART #	PG.
		583	335	FF13273	299	FT1271	335
		624	296	FF13570	299	FT1279	340
		1561	335	FF13571	299	FT1281	333
		1562	335	FF90308	297	FT1283	329
		1563	335	FF90311	297	FT1307	330
		1582	335	FT1013	333	FT1312	341
		1597	335	FT1028	334	FT1355-01	296
		1598	335	FT1033	334	FT1330-XL	329
		1599	335	FT1038A	336	FT1380	327
		222005	295	FT1058	342	FT1380P	327
		222022	295	FT1081	336	FT1390	329
		900564	295	FT1090	336	FT1500	337
		900952	295	FT1092	329	HP	298
		900705	295	FT1095	335	HPM	298
		900729	297	FT1097	332	HSM	298
		F2015	336	FT1101	338	HLM	298
		FC425	296	FT1215	339	S1026	339
		FF9075	222, 310	FT1220	335	S1043	339
		FF9217	296	FT1229	340	S1102	339
		FF13267	299	FT1230	340	S1104	338
		FF13268	299	FT1234	334	S1118	339
		FF13269	299	FT1240	340	S1120	339
		FF13270	299	FT1258	337	SC1681	339
		FF13271	299	FT1260	338	SC1709	339
		FF13272	299	FT1261	341	SC1772	338

WARNING

The user must exercise extreme care when operating any Eaton assembly equipment with powered moving components. Safety glasses must be worn at all times when using any Eaton assembly equipment.

Read and understand the owners and operators manual before attempting to operate any equipment.

Eaton personnel are available to answer any questions, please call Eaton Corporation, 14615 Lone Oak Road, Eden Prairie, MN 55344, 952-937-9800.

Eaton assembly equipment is designed to be used only with Aeroquip hose and Eaton hose fittings.



SPECIALTY & TRUCK HOSE
 LOW & MEDIUM PRESSURE HOSE
 HIGH PRESSURE HOSE
 HOSE FITTINGS
 ADAPTERS & TUBE FITTINGS
 ACCESSORIES & ASSEMBLY INSTRUCTIONS
 HOSE ASSEMBLY EQUIPMENT
 APPENDICES

Protective coils, sleeves & clamps

222005*, 222022

Stainless steel internal support coils



Recommended for vacuum service with most hose.

For use with hose: see pages 300-308.

PART NUMBER	COIL O.D.	
	mm	in.
222005-23C	8,6	.34
222005-10C	10,7	.42
222005-21C	12,9	.51
222005-11C	15,2	.60
222022-12C	17,8	.70
222005-13C	18,5	.73
222005-14C	23,9	.94
222022-16C	24,6	.97
222005-15C	30,2	1.19
222022-20C	31,7	1.25
222005-17C	36,6	1.44
222022-24C	38,1	1.50
222005-18C	47,7	1.88
222022-32C	50,0	1.97
222005-19C	62,0	2.44
222022-40C	67,8	2.67
222022-48C	83,0	3.27
222022-60C	108,7	4.28
222022-80C	134,1	5.28

*222005 is 301 stainless steel.

900705

Steel protective coil sleeve



Recommended for use where hose lines are subjected to excessive abrasion, kinking or accidental damage. Construction: spring steel, rust resistant.

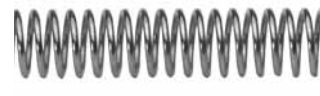
This coil should fit snugly to the hose O.D. expanding the coil I.D. (unwind the coil) may be necessary for proper installation.

For use with hose: see pages 300-308.

SLEEVE DASH NO	SLEEVE I.D.	
	mm	in.
-17S	11,2	.44
-1S	12,7	.50
-13S	14,5	.57
-2S	16,0	.63
-3S	19,0	.75
-4S	22,3	.88
-5S	26,2	1.03
-14S	28,7	1.13
-6S	31,0	1.22
-7S	37,3	1.47
-9S	42,9	1.69
-8S	48,5	1.91
-10S	54,1	2.13
-16S	62,0	2.44
-11S	65,0	2.56

900564

Steel protective coil spring



Protects hose cover and reinforcement from abrasion and accidental damage. Construction: steel wire, rust resistant.

This coil should fit snugly to the hose O.D. expanding the coil I.D. (unwind the coil) may be necessary for proper installation.

For use with hose: see pages 300-308.

SLEEVE DASH NO	SLEEVE I.D.	
	mm	in.
-1S	15,5	.61
-12S	17,0	.67
-2S	19,0	.75
-15S	20,6	.81
-14S	21,6	.85
-3S	23,1	.91
-4S	26,4	1.04
-5S	30,0	1.18
-6S	34,0	1.34
-7S	42,2	1.66
-9S	47,5	1.87
-8S	54,1	2.13
-10S	60,4	2.38
-13S	69,8	2.75
-11S	73,1	2.88

900952

Plastic protective coil sleeve



Recommended to protect hose from abrasion, this light weight plastic sleeve is unaffected by air, water, oil, gasoline, hydraulic and most other fluids. This coil can also be used for group bundling of hose lines. Temperature range of 0°F to +180°F.

For use with hose: see pages 300-308.

PART NO	SLEEVE I.D.	
	mm	in.
900952-30	40,0	1.58
900952-22	34,0	1.34
900952-16	27,0	1.06
900952-12	21,0	.83
900952-10	16,0	.63
900952-8	12,5	.49
900952-6	9,5	.37
900952-4	6,0	.24

SPECIALTY & TRUCK HOSE

LOW & MEDIUM PRESSURE HOSE

HIGH PRESSURE HOSE

HOSE FITTINGS

ADAPTERS & TUBE FITTINGS

ACCESSORIES & ASSEMBLY INSTRUCTIONS

HOSE ASSEMBLY EQUIPMENT

APPENDICIES

Firesleeve



Firesleeve will protect hose from direct flame.

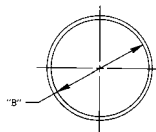
Firesleeve is constructed of a uniform single layer of braided fiberglass tubing impregnated with flame resistant silicone rubber. Temperature range of -65°F to +500°F.

For use with hose:
see pages 300-308.

PART #	I.D.		CLAMP #
	mm	in.	
624-5	7,9	.31	FF9217-0622S
624-7	11,2	.44	FF9217-0622S
624-8	12,7	.50	FF9217-0622S
624-9	14,2	.56	FF9217-0622S
624-10	15,7	.62	FF9217-0622S
624-11	17,5	.69	FF9217-0622S
624-12	19,0	.75	FF9217-0622S
624-13	20,6	.81	FF9217-0622S
624-14	22,3	.88	FF9217-0622S
624-16	25,4	1.00	FF9217-0622S
624-18	28,4	1.12	FF9217-0622S
624-20	31,7	1.25	FF9217-0648S
624-22	35,0	1.38	FF9217-0648S
624-24	38,1	1.50	FF9217-0648S
624-26	41,1	1.62	FF9217-0648S
624-28	44,4	1.75	FF9217-0648S
624-30	47,7	1.88	FF9217-0648S
624-32	50,8	2.00	FF9217-0648S
624-38	60,4	2.38	FF9217-0648S
624-42	66,5	2.62	FF9217-0648S
624-46	73,1	2.88	FF9217-0664C
624-50	79,2	3.12	FF9217-0664C
624-54	85,8	3.38	FF9217-0664C
624-60	95,2	3.75	FF9217-0664C

FC425

Nylon abrasion sleeve
Meets MSHA
requirements



Nylon sleeve protects hose from abrasion and allows bundling of hose lines.

For use with hose:
see pages 300-308.

PART #	NOMINAL SLEEVE I.D.* "B"	
	mm	in
FC425-12	18,0	.71
FC425-16	25,4	1.00
FC425-18	28,7	1.13
FC425-20	31,7	1.25
FC425-24	40,4	1.59
FC425-28	44,4	1.75
FC425-32	52,6	2.07
FC425-38	60,4	2.38
FC425-40	64,5	2.54
FC425-46	72,6	2.86
FC425-54	84,8	3.34
FC425-59	93,0	3.66

* The maximum O.D. of hose fittings must be allowed for if fittings are to be covered.

FF9217

Firesleeve clamp



Recommended for attaching 624 Firesleeve to hose lines.

Clamp numbers: FF9217-0622S, FF9217-0648S; 3/8 inch wide, FF9217-0664C; 1/2 inch wide.

For use with hose:
see pages 300-308.



Hose Cleaning System

The Jetcleaner™ hose cleaning system offers a revolutionary solution for the internal cleaning of bulk hose and finished hose assemblies. Using a low pressure air gun, the Jetcleaner system routes a foam projectile through the hose to thoroughly remove debris remaining from cutting, skiving and assembly operations. Available in kit form or as individual components, the Jetcleaner hose cleaning system is the system of choice for hose assembly professionals.

Hose Kit
(P/N FT1355-01)

Includes:

Jetcleaner pistol, Hose nozzles, 1/4" through 2" ID, Adapter ring, Bench stand, Aluminum case, Quick disconnect coupling

Note: Hose projectiles (P/N FT1355-3-size) not included in kit.

Also available individually:

Jetcleaner pistol –
FT1355-1-01

Hose nozzles –
FT1355-2-size

Hose projectiles –
FT1355-3-size

Coupling nozzles –
FT1355-4-size

Coupling projectiles –
FT1355-5-size

Adapter ring –
FT1355-10-01

Carrying case –
FT1355-11-02

Bench stand –
FT1355-12-01