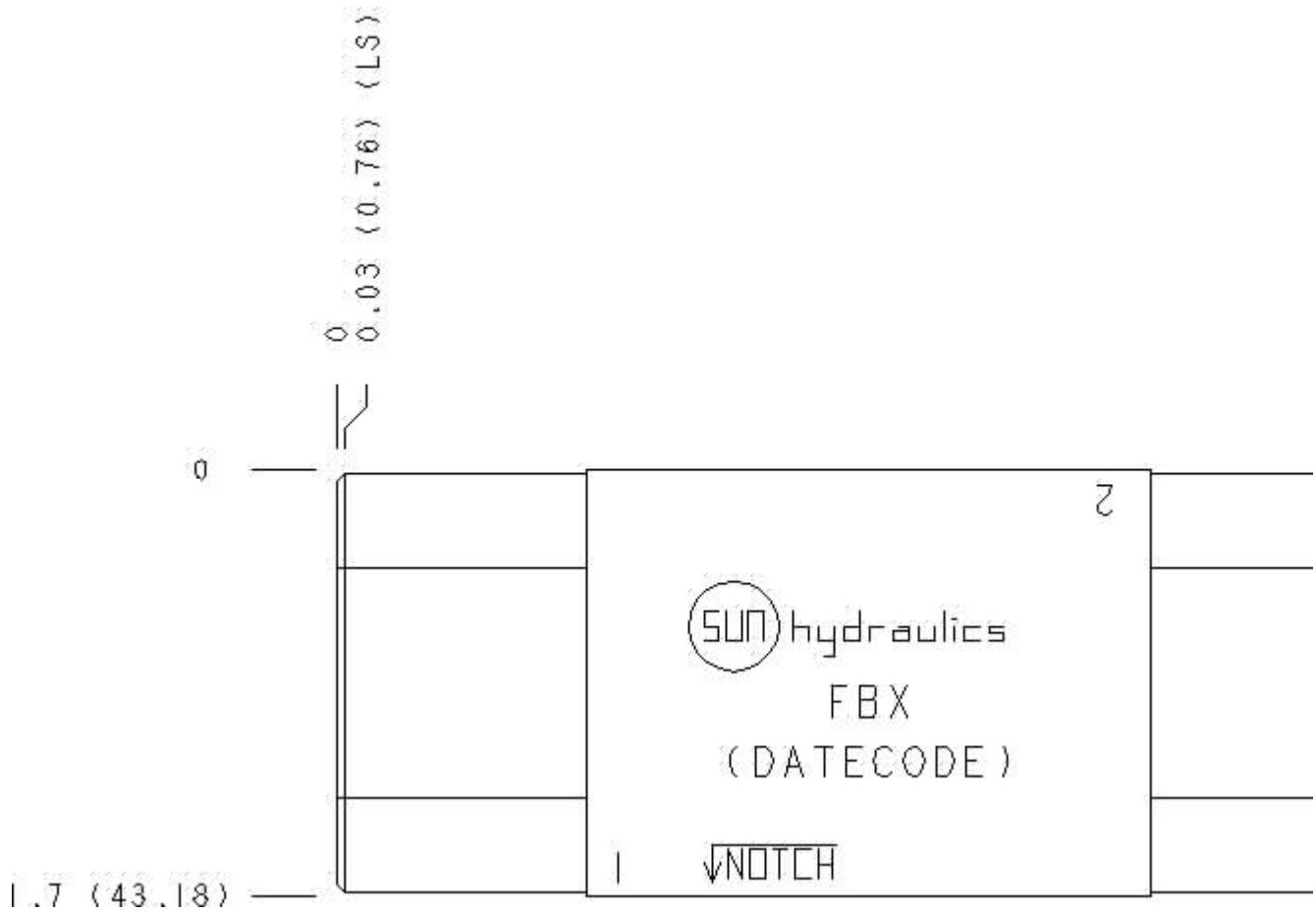


Functional Group:
 Products : Manifolds : Sandwich : Relief : ISO 03 : A and B to T high capacity

Model:
 FBX

Face : 6



Cartridge extension measurement is to the centerline of the cartridge.

Aluminum Body Pressure Rating: **3000 psi (210 bar)**
 Ductile Iron Body Pressure Rating: **5000 psi (350 bar)**

Technical Data

	U.S. Units	Metric Units
Model Weight	0.97 lb.	0.44 kg.
Cavity	T-10A	
Body Features	A and B to T	
Body Type	Sandwich	
Interface	ISO 03	
Open Cavity Quantity	2	

Option Selection:

Model Code	Description
FBX	Aluminum, Buna-N, U.S. Units
FBX/S	Ductile Iron, Buna-N, U.S. Units
FBX/V	Aluminum, Viton, U.S. Units
FBX/Y	Ductile Iron, Viton, U.S. Units

Special Notes :

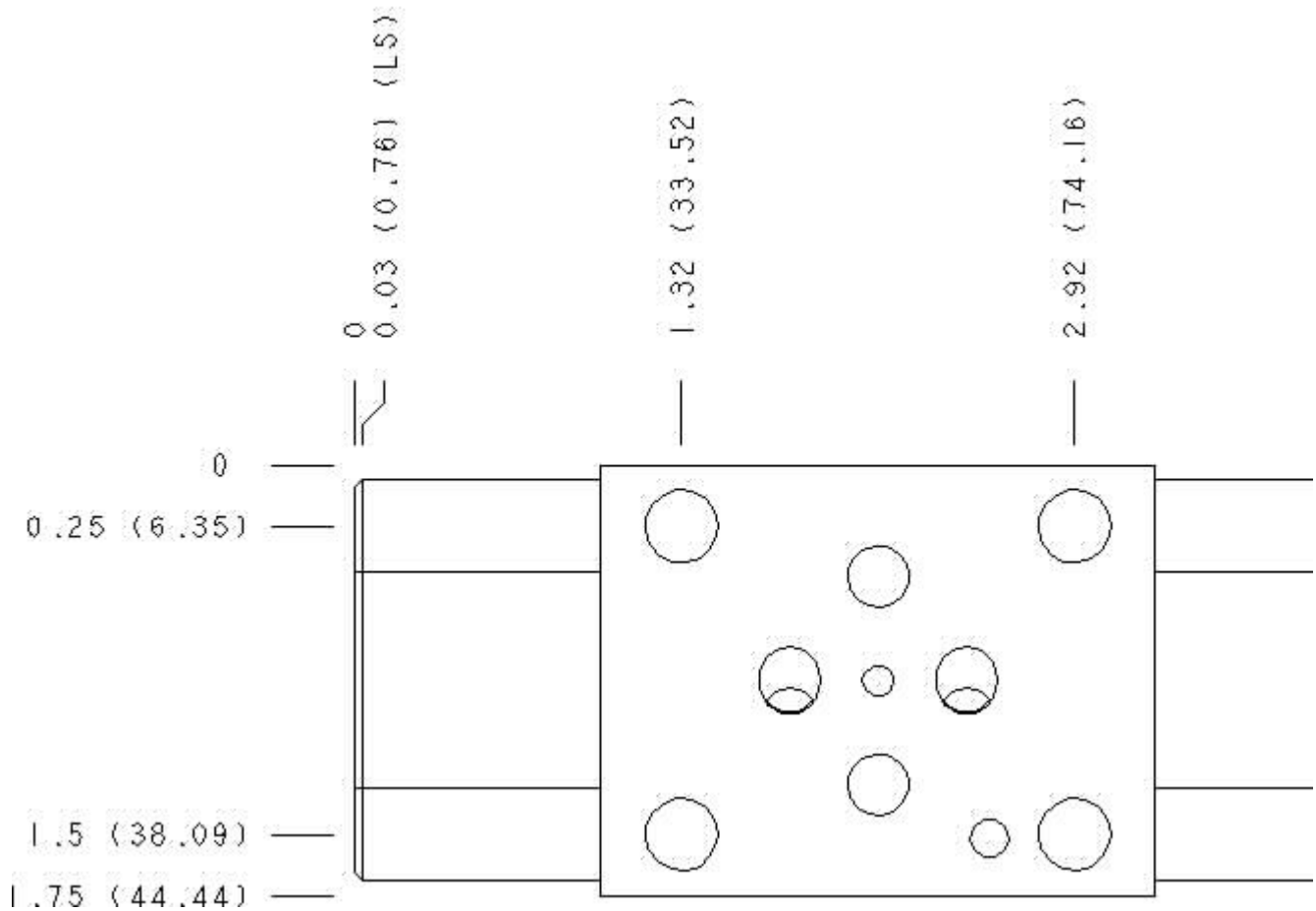
No Special Notes available for selected Model.



Functional Group:
Products : Manifolds : Sandwich : Relief : ISO 03 : A and B to T high capacity

Model:
FBX

Face : 2



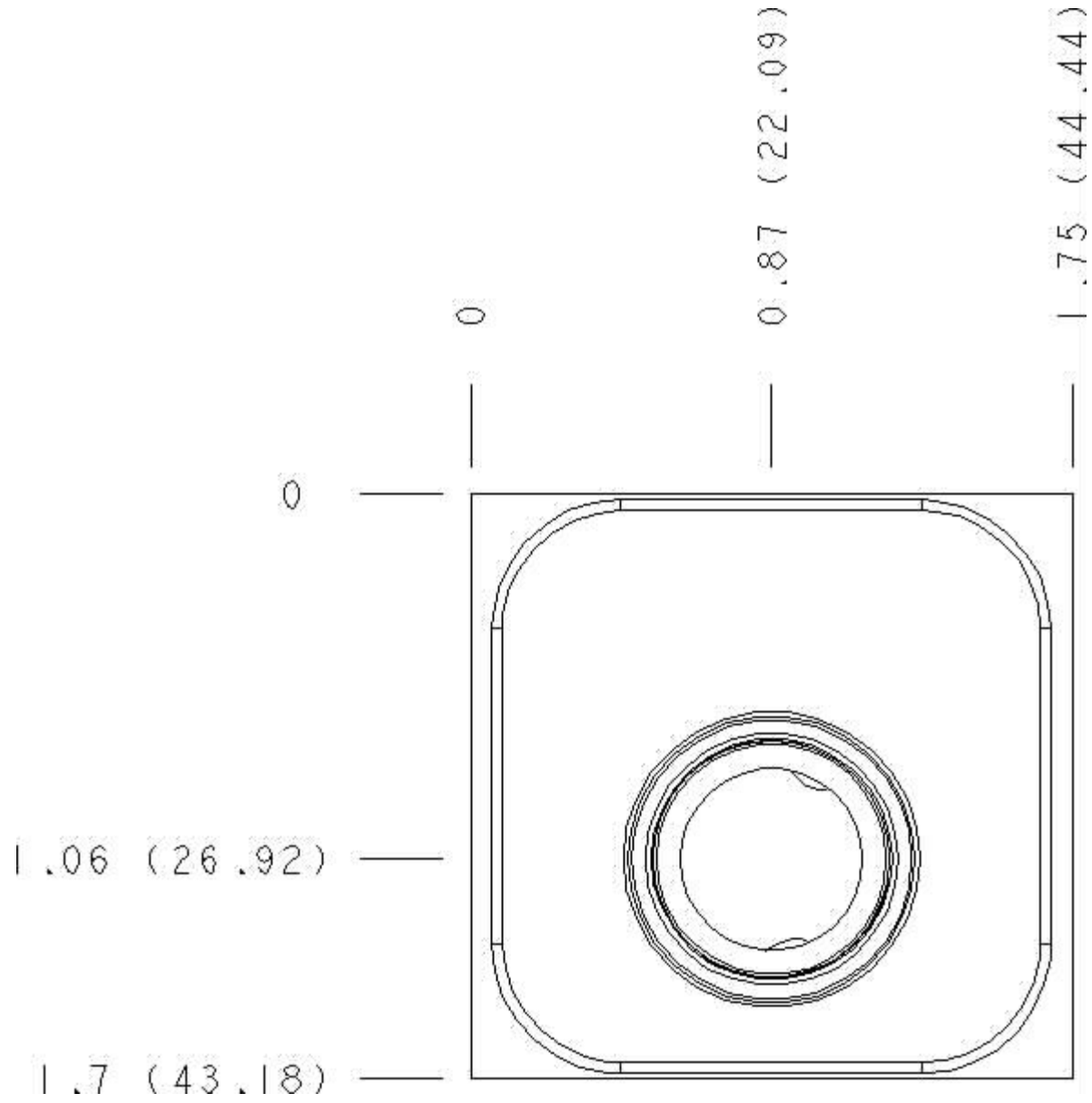
Cartridge extension measurement is to the centerline of the cartridge.



Functional Group:
 Products : Manifolds : Sandwich : Relief : ISO 03 : A and B to T high capacity

Model:
 FBX

Face : 5



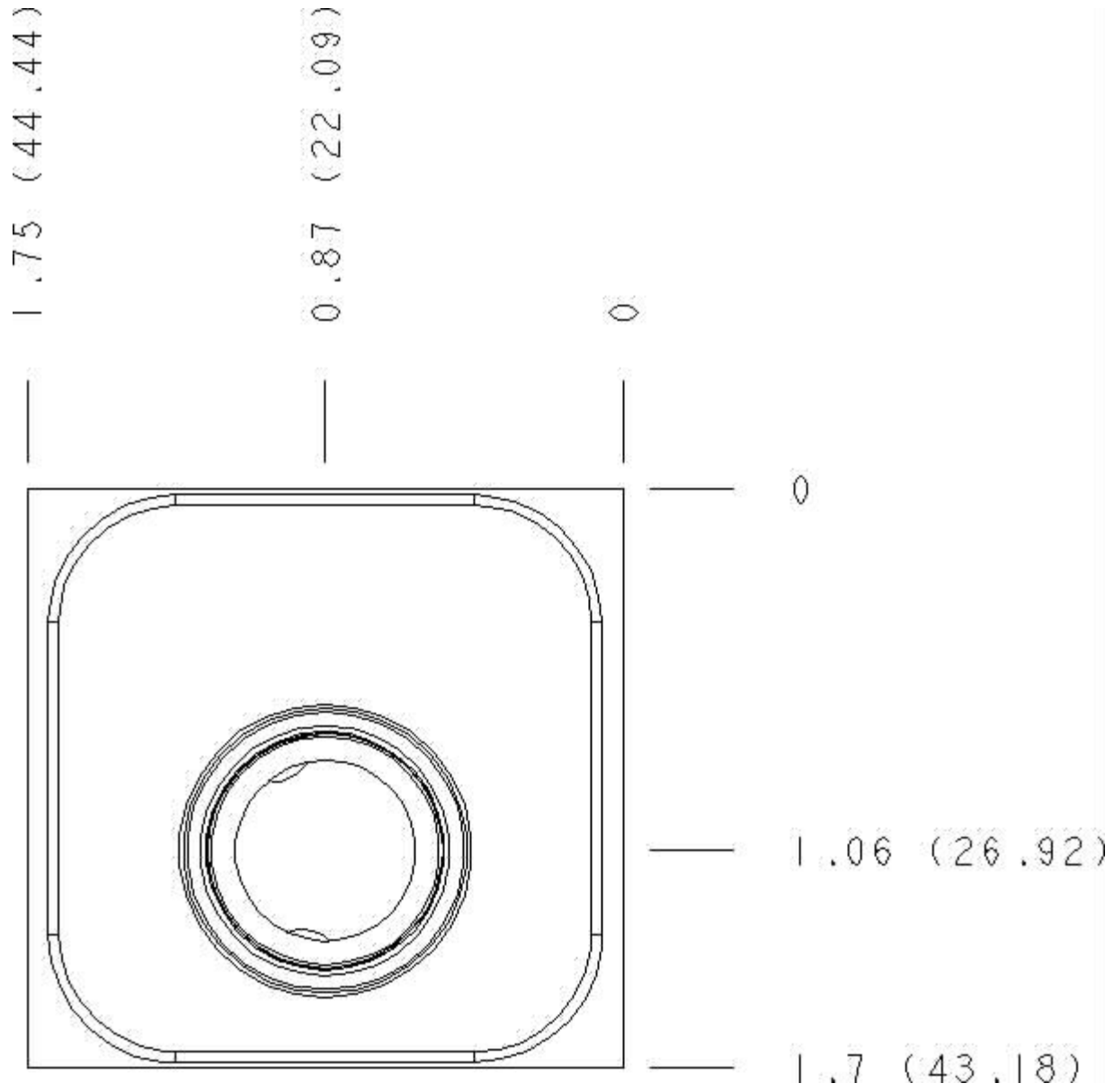
Cartridge extension measurement is to the centerline of the cartridge.



Functional Group:
 Products : Manifolds : Sandwich : Relief : ISO 03 : A and B to T high capacity

Model:
 FBX

Face : 7



Cartridge extension measurement is to the centerline of the cartridge.



Functional Group:
 Products : Manifolds : Sandwich : Relief : ISO 03 : A and B to T high capacity

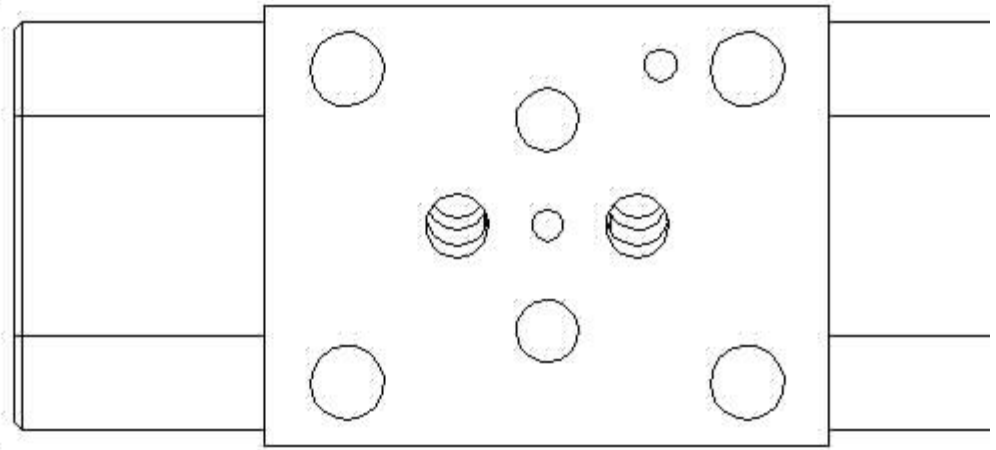
Model:
 FBX

Face : 10

1.75 (44.44)

0

0.03 (0.76) (LS)



Cartridge extension measurement is to the centerline of the cartridge.



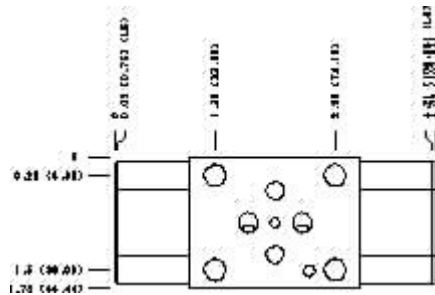
Functional Group:

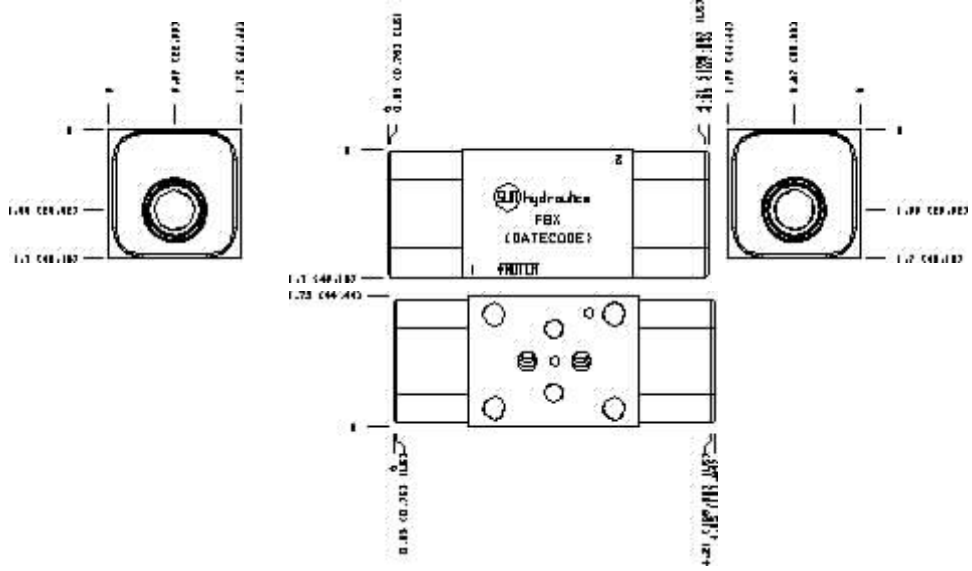
Products : Manifolds : Sandwich : Relief : ISO 03 : A and B to T high capacity

Model:
FBX

Projection Type

All Dimensions in Inches(mm)





Copyright © 2007-2008 Sun Hydraulics Corporation.
All rights reserved.

[Terms and Conditions](#) - [Statement of Privacy](#)