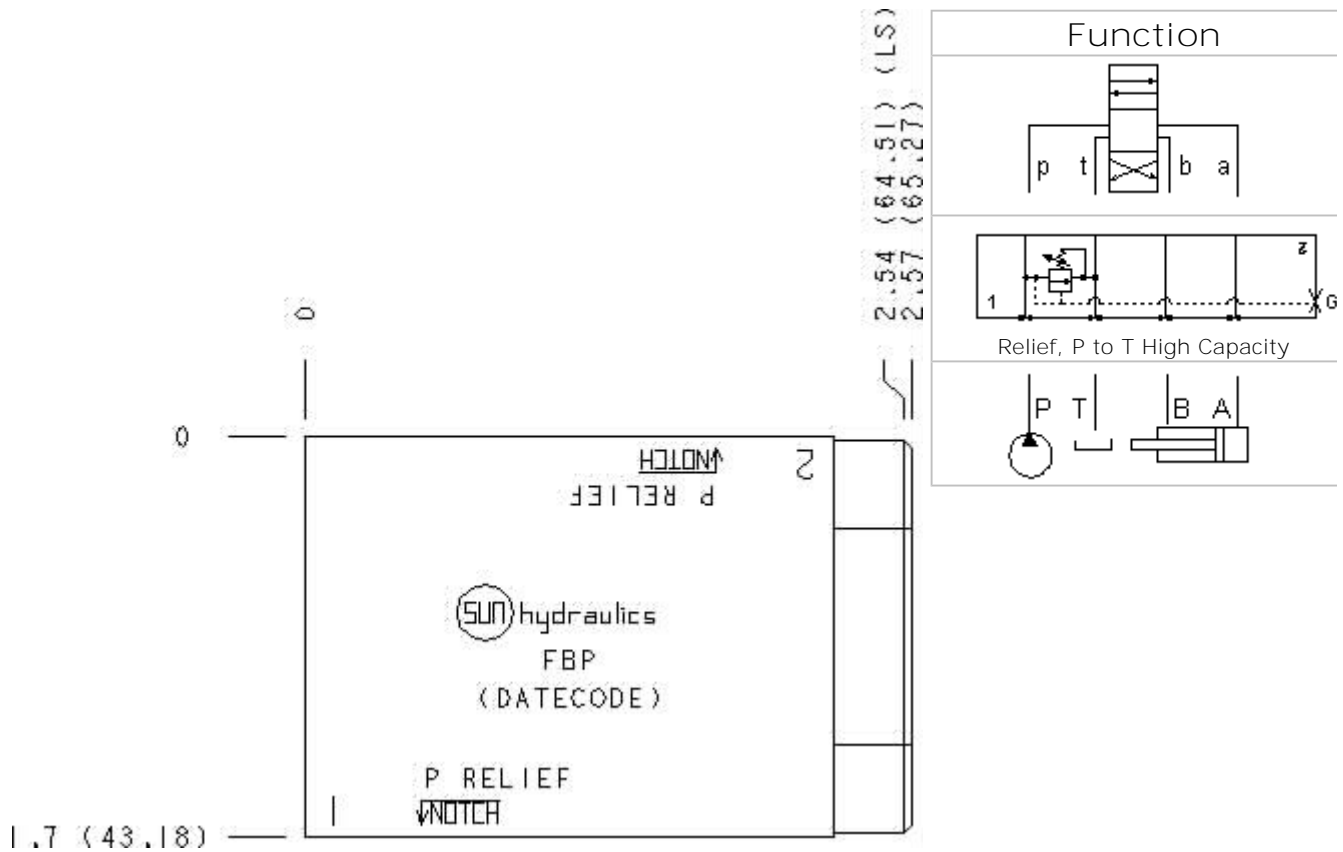


Functional Group:
 Products : Manifolds : Sandwich : Relief : ISO 03 : P to T high capacity

Model:
 FBP

Aluminum Body Pressure Rating: 3000 psi (210 bar)
 Ductile Iron Body Pressure Rating: 5000 psi (350 bar)

Face: 6



Cartridge extension measurement is to the centerline of the cartridge.

Port Headings and Sizes		
FBP/M	Gage Port (Plugged)	1/4" BSPP
FBP	Gage Port (Plugged)	1/4" NPTF

Technical Data

	U.S. Units	Metric Units
Model Weight	0.64 lb.	0.29 kg.
Cavity		T-10A
Body Features		P to T
Body Type		Sandwich
Interface		ISO 03
Open Cavity Quantity		1
Stack Height	1.75 in.	44,5 mm

Model Code	Description
FBP/M	Aluminum, Buna-N, Metric
FBP/Z	Aluminum, Viton, Metric
FBP	Aluminum, Buna-N, U.S. Units
FBP/V	Aluminum, Viton, U.S. Units
FBP/T	Ductile Iron, Buna-N, Metric
FBP/W	Ductile Iron, Viton, Metric
FBP/S	Ductile Iron, Buna-N, U.S. Units
FBP/Y	Ductile Iron, Viton, U.S. Units

Display Components

	Description	Quantity
811-001-006	Pin	1
500-001-012	O-Ring	4
700-002	Seal Plate	1
340-003	Pipe Plug	1

Special Notes

- No Special Notes Available for selected model.
-
-