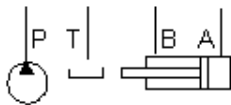
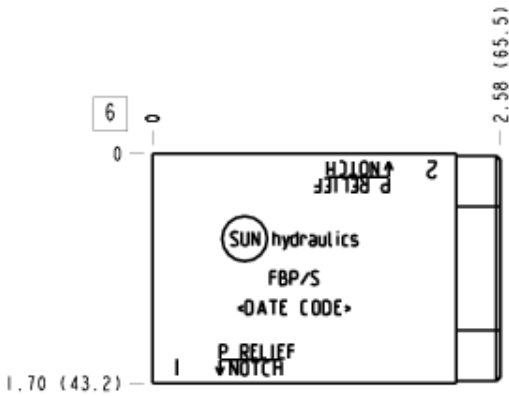


Relief, P to T High Capacity



CONFIGURATION

/S Modifier 65-45-12 Ductile Iron, Buna-N, Chem. Black



TECHNICAL DATA

Body Type	Sandwich
Interface	ISO 03
Body Features	P to T
Stack Height	1.75 in.
Seal Plate Included (see notes)	Yes
Open Cavities	1
Cavity	T-10A
Port Size	1/4" NPTF
Model Weight	1.51 lb.

NOTES

- Stack height value in technical data table includes seal retainer plate.
- Important:** Carefully consider the maximum system pressure. The pressure rating of the manifold is dependent on the manifold material, with the port type/size a secondary consideration. Manifolds constructed of aluminum are not rated for pressures higher than 3000 psi (210 bar), regardless of the port type/size specified.

PORT DESIGNATORS

Modifiers	Ports
FBP, /10, /11, /15, /16, /S, /S3, /V, /Y, /Y3	Gage Port (Plugged): 1/4" NPTF;
FBP/1A, /1B, /1F, /1G, /M, /T, /T3, /W, /W3, /Z	Gage Port (Plugged): 1/4" BSPP;

INCLUDED COMPONENTS

Part	Description	Quantity
340-003	Pipe Plug	1
500-001-012	O-Ring	4
700-002	Seal Plate	1
811-001-006	Pin	1

CONFIGURATION OPTIONS

Model Code Example: FBP/S

MODIFIER (S)

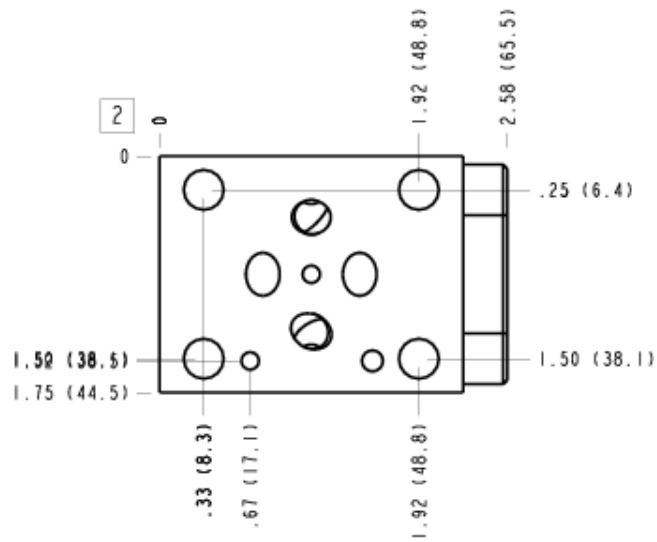
- /S** 65-45-12 Ductile Iron, Buna-N, Chem. Black
6061-T651 Aluminum, Buna-N
- /11** 6061-T651 Aluminum, Buna-N, Clear Anodize - Per MIL SPEC 8625F Type II, Class I
- /10** 6061-T651 Aluminum, Buna-N, Black Anodize - Per MIL SPEC 8625F Type II, Class II
- /V** 6061-T651 Aluminum, Viton
- /16** 6061-T651 Aluminum, Viton, Clear Anodize - Per MIL SPEC 8625F Type II, Class I
- /15** 6061-T651 Aluminum, Viton, Black Anodize - Per MIL SPEC 8625F Type II, Class II
- /M** 6061-T651 Aluminum, Metric, Buna-N
- /1B** 6061-T651 Aluminum, Metric, Buna-N, Clear Anodize - Per MIL SPEC 8625F Type II, Class I
- /1A** 6061-T651 Aluminum, Metric, Buna-N, Black Anodize - Per MIL SPEC 8625F Type II, Class II
- /Z** 6061-T651 Aluminum, Metric, Viton
- /1G** 6061-T651 Aluminum, Metric, Viton, Clear Anodize - Per MIL SPEC 8625F Type II, Class I
- /1F** 6061-T651 Aluminum, Metric, Viton, Black Anodize - Per MIL SPEC 8625F Type II, Class II
- /S3** 65-45-12 Ductile Iron, Buna-N, Trivalent Clear Zinc with Top Sealer
- /Y** 65-45-12 Ductile Iron, Viton, Chem. Black
- /Y3** 65-45-12 Ductile Iron, Viton, Trivalent Clear Zinc with Top Sealer
- /T** 65-45-12 Ductile Iron, Metric, Buna-N, Chem. Black
- /T3** 65-45-12 Ductile Iron, Metric, Buna-N, Trivalent Clear Zinc with Top Sealer
- /W** 65-45-12 Ductile Iron, Metric, Viton, Chem. Black
- /W3** 65-45-12 Ductile Iron, Metric, Viton, Trivalent Clear Zinc with Top Sealer

MANIFOLD FACES

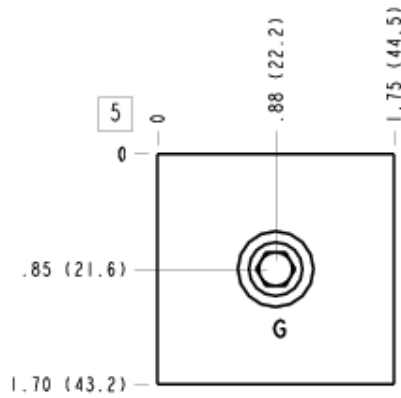
FACE GRID

1	2	3	4
5	6	7	8
9	10	11	12

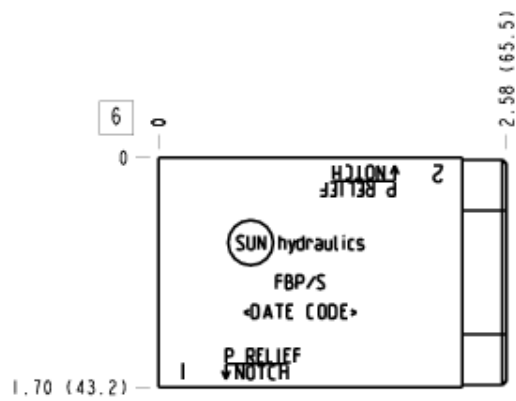
Face 2



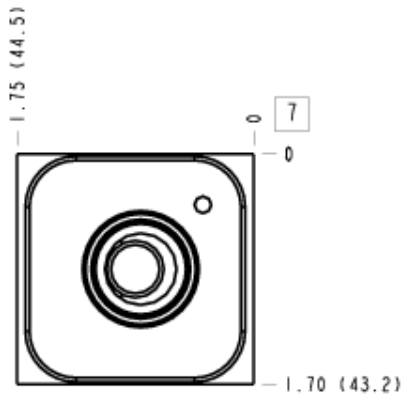
Face 5



Face 6



Face 7



Face 10

