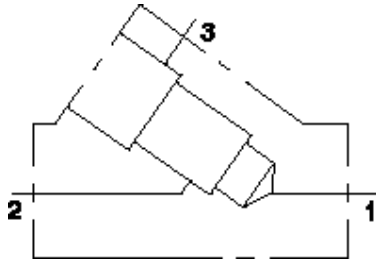




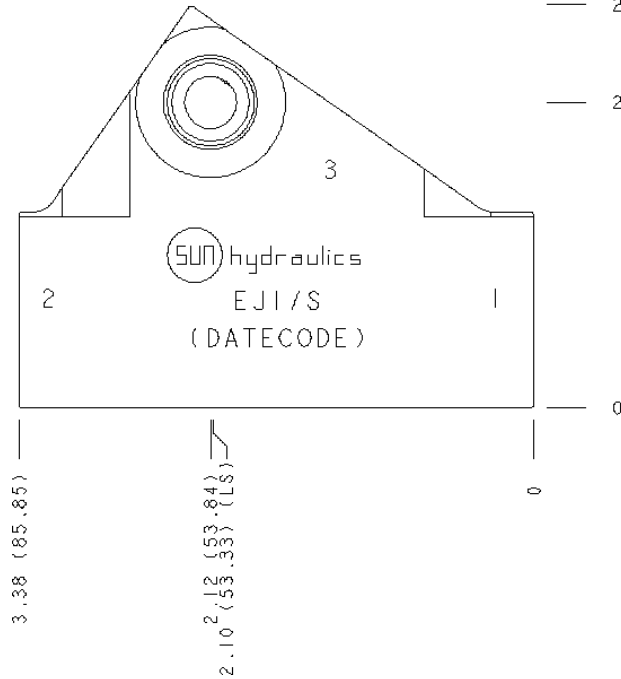
— 2.64 (67.05)

— 2.0 (50.8)



**CONFIGURATION**

/S Modifier 65-45-12 Ductile Iron, Buna-N, Chem. Black



**TECHNICAL DATA**

Body Type	Line mount
Interface	None
Body Features	Inline
Mounting Hole Diameter	.34 in.
Mounting Hole Depth	Through
Mounting Hole Quantity	2
Open Cavities	1
Cavity	T-11A
Port Size	SAE 6
Model Weight	2.33 lb.

**NOTES**

**Important:** Carefully consider the maximum system pressure. The pressure rating of the manifold is dependent on the manifold material, with the port type/size a secondary consideration. Manifolds constructed of aluminum are not rated for pressures higher than 3000 psi (210 bar), regardless of the port type/size specified.

**PORT DESIGNATORS**

Modifiers	Ports
EJI, /10, /11	Ports 1 & 2: SAE 6; Port 3: SAE 6;

**CONFIGURATION OPTIONS**

Model Code Example: EJI/S

**MODIFIER** \_\_\_\_\_ **(/S)**

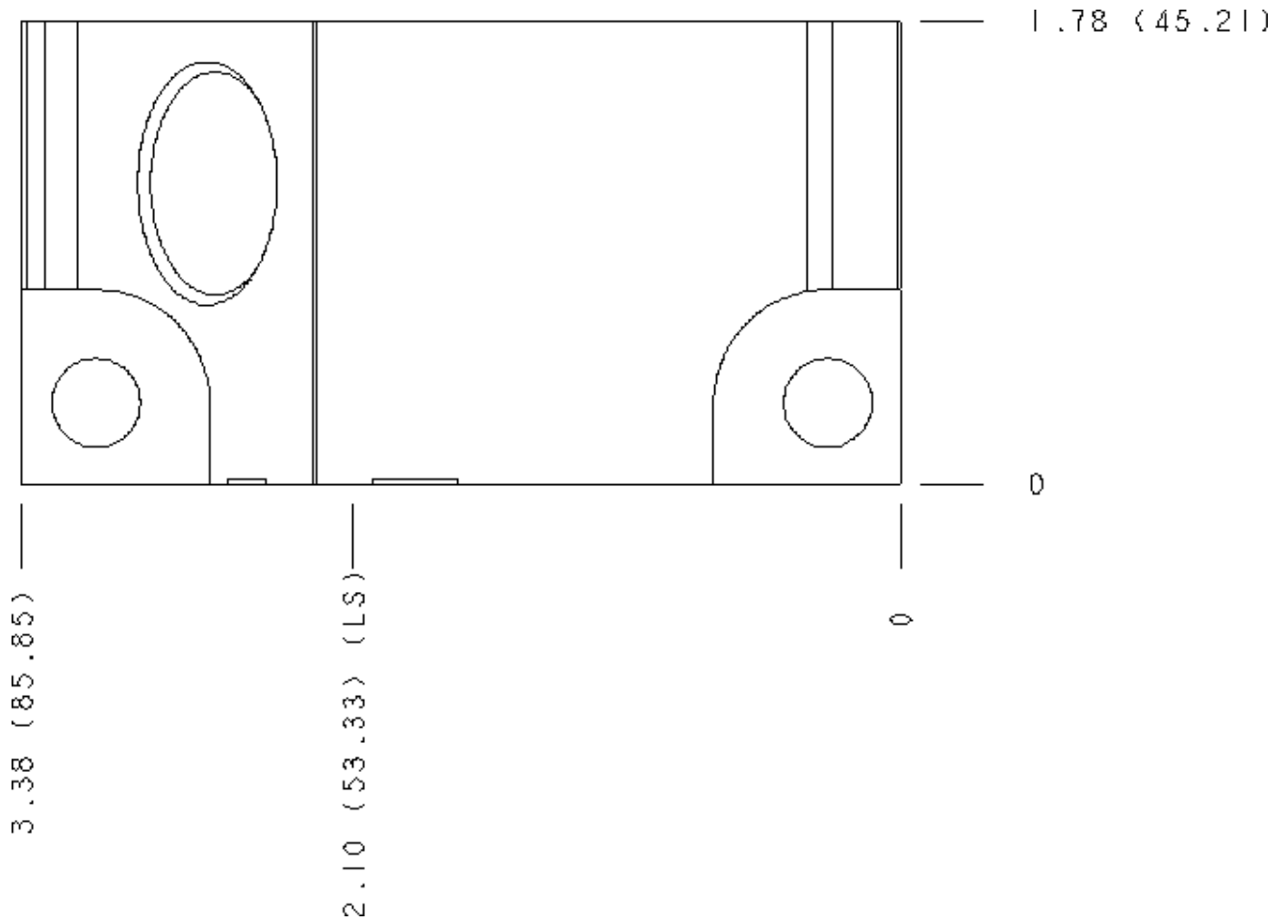
- /S** 65-45-12 Ductile Iron, Buna-N, Chem. Black
- 6061-T651 Aluminum, Buna-N
- /11** 6061-T651 Aluminum, Buna-N, Clear Anodize - Per MIL SPEC 8625F Type II, Class I
- /10** 6061-T651 Aluminum, Buna-N, Black Anodize - Per MIL SPEC 8625F Type II, Class II
- /S3** 65-45-12 Ductile Iron, Buna-N, Trivalent Clear Zinc with Top Sealer

# MANIFOLD FACES

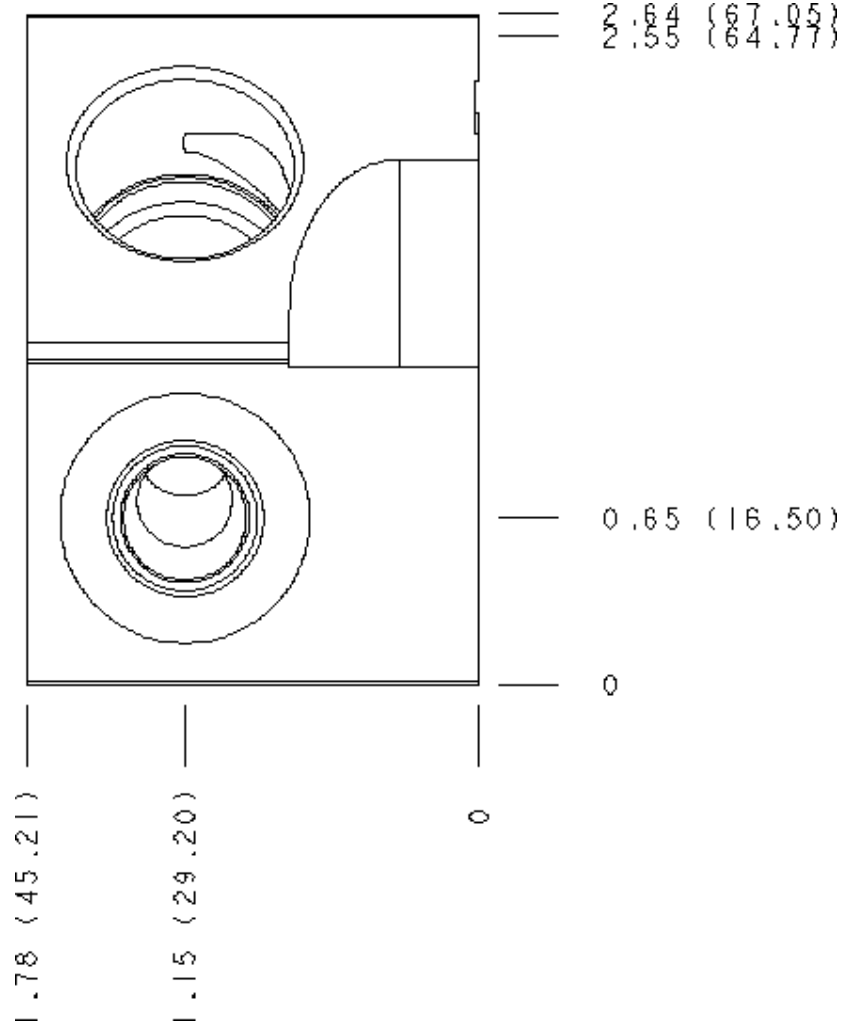
## FACE GRID

1	2	3	4
5	6	7	8
9	10	11	12

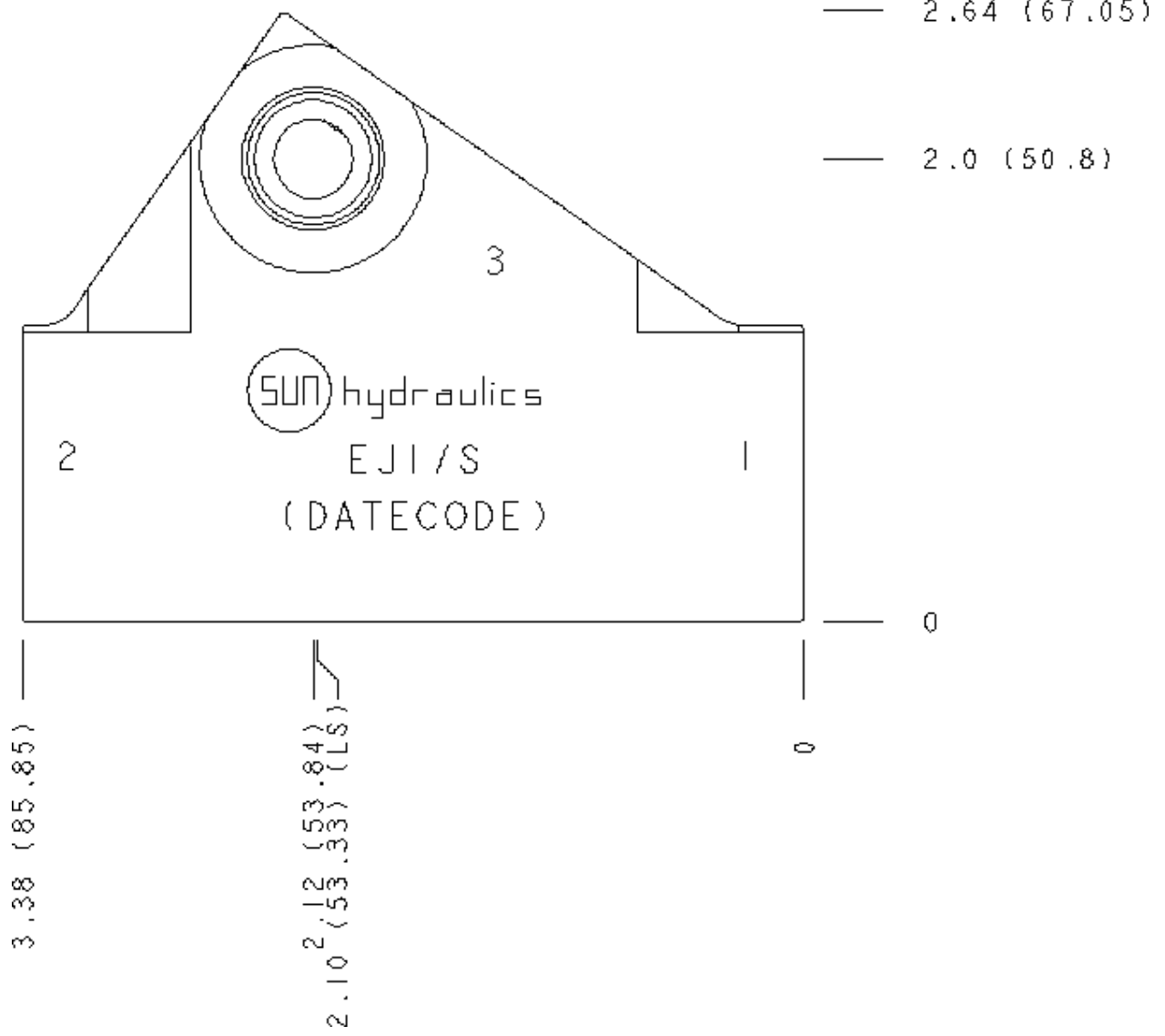
## Face 2



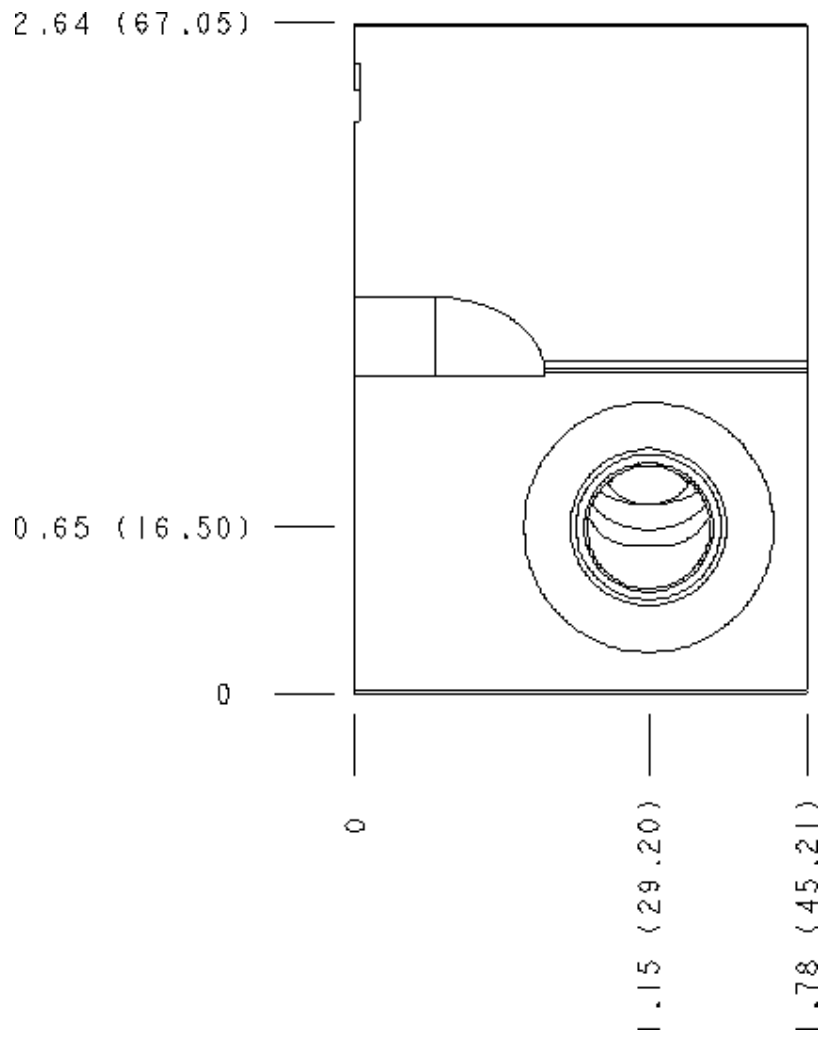
Face 5



Face 6



**Face 7**



Face 10

