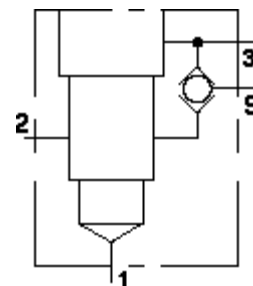


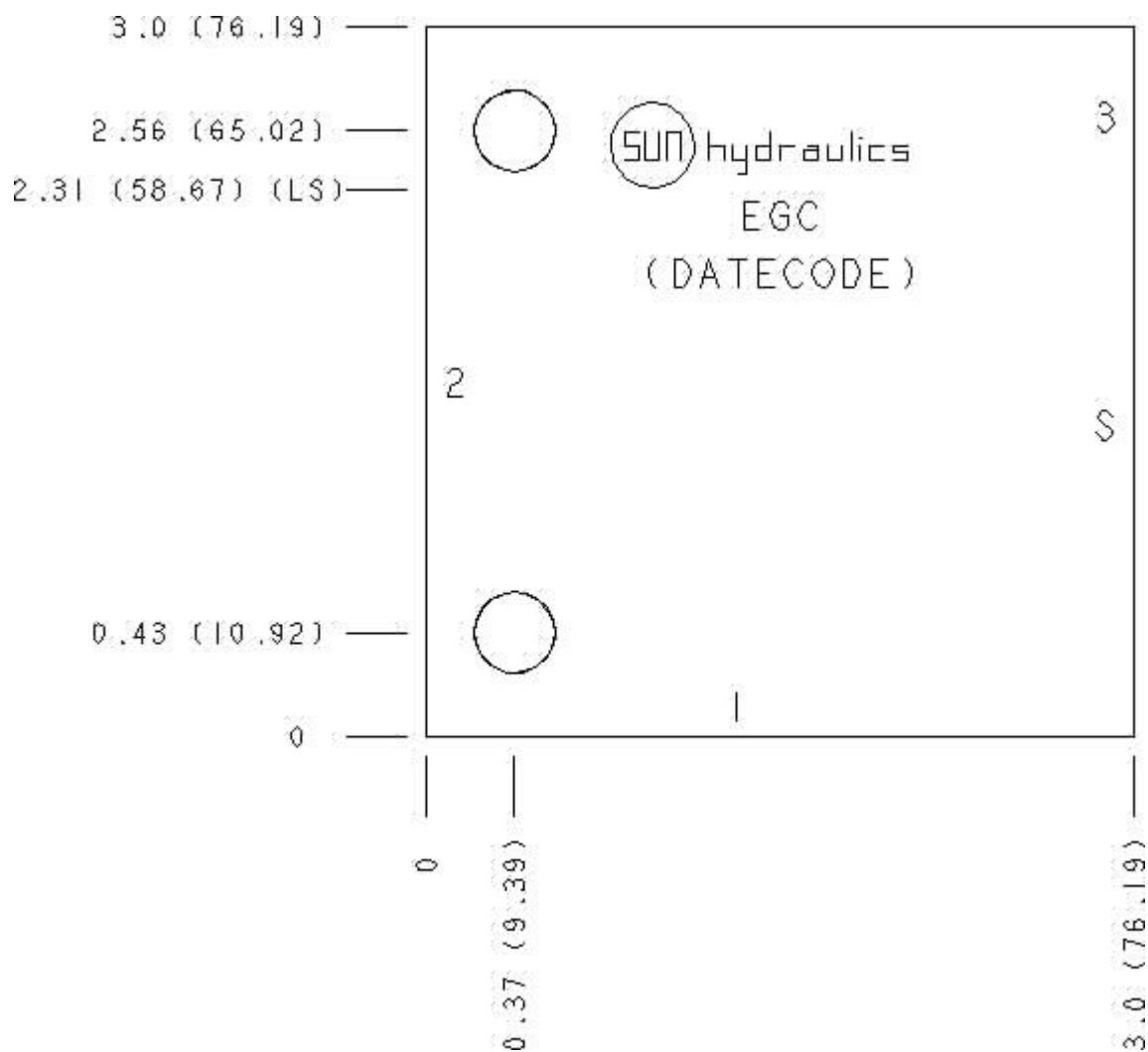
Functional Group:
 Products : Manifolds : Line mount : Counterbalance : 3 Port : Ninety degree with shuttle

Model:
 EGC

Aluminum Body Pressure Rating: 3000 psi (210 bar)
 Ductile Iron Body Pressure Rating: 5000 psi (350 bar)



Face: 6



Cartridge extension measurement is to the centerline of the cartridge.

Port Headings and Sizes

EGC Ports 1 & 2

1/2" NPTF

Technical Data

	U.S. Units	Metric Units
Model Weight	0.88 lb.	0.40 kg.
Cavity	T-11A	
Body Features	Ninety degree with shuttle	
Body Type	Line mount	
Interface	None	
Open Cavity Quantity	1	

Option Selection

U.S. Dollar ▼

Model Code	Description
EGC	Aluminum, Buna-N, U.S. Units
EGC/S	Ductile Iron, Buna-N, U.S. Units

Display Components

	Description	Quantity
260-010	Seat	1
340-002	Pipe Plug	1
800-001-070	Ball	1

Special Notes

- No Special Notes Available for selected model.