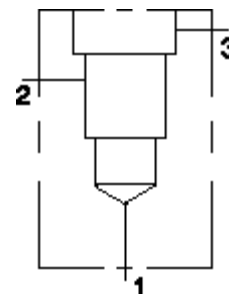


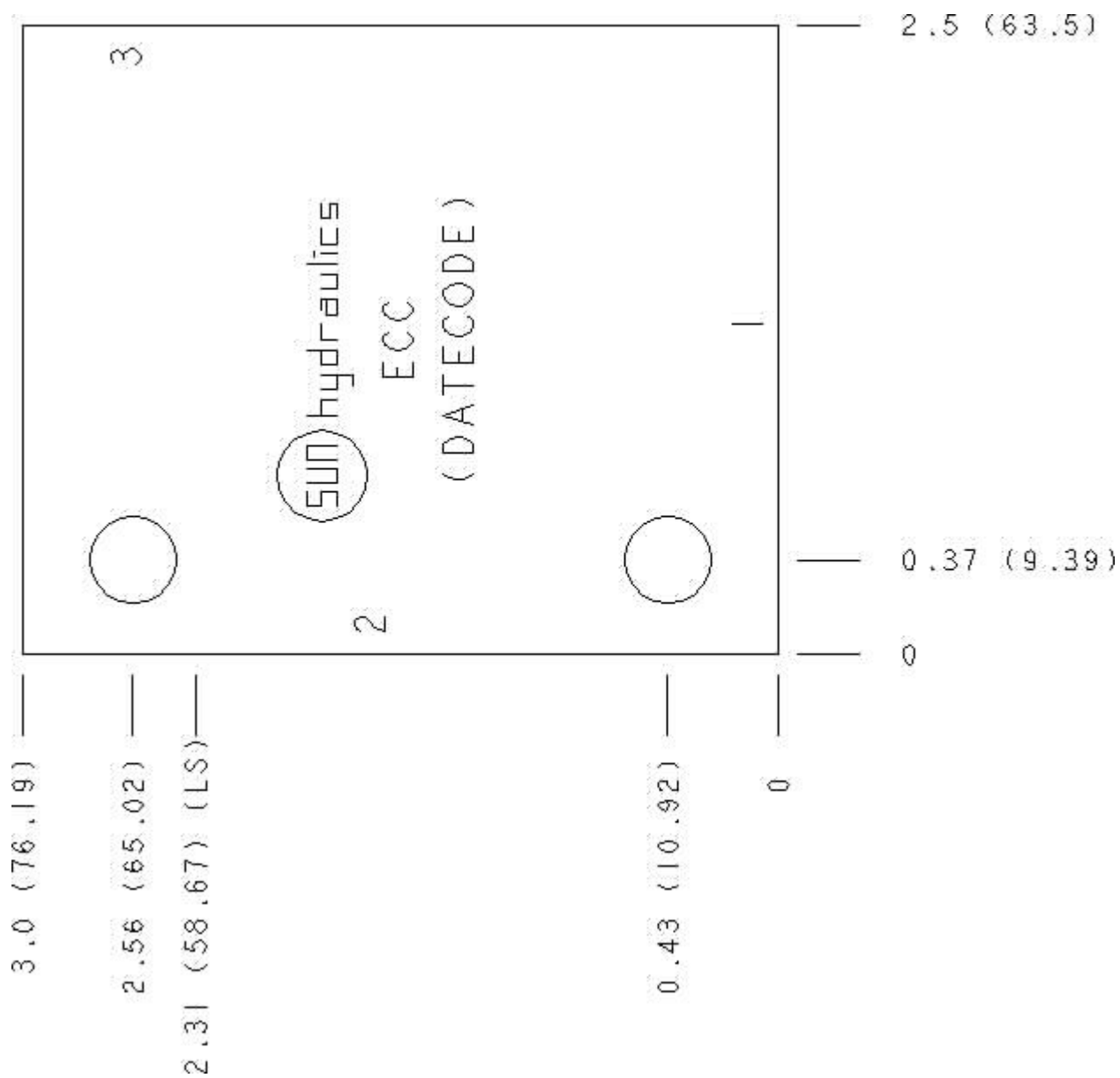
Functional Group:  
 Products : Manifolds : Line mount : Circuit Saver : 3 Port : Ninety Degree

Model:  
 ECC

Aluminum Body Pressure Rating: 3000 psi (210 bar)  
 Ductile Iron Body Pressure Rating: 5000 psi (350 bar)



Face: 6



Cartridge extension measurement is to the centerline of the cartridge.

---

Port Headings and Sizes

|     |             |           |
|-----|-------------|-----------|
| ECC | Ports 1 & 2 | 1/2" NPTF |
| ECC | Port 3      | 1/4" NPTF |

---

---

Technical Data

|                        | U.S. Units    | Metric Units |
|------------------------|---------------|--------------|
| Model Weight           | 0.71 lb.      | 0.32 kg.     |
| Cavity                 | T-11A         |              |
| Body Features          | Ninety degree |              |
| Body Type              | Line mount    |              |
| Interface              | None          |              |
| Open Cavity Quantity   | 1             |              |
| Mounting Hole Diameter | .34 in.       | 8.6 mm       |
| Mounting Hole Depth    | Through       |              |
| Mounting Hole Quantity | 2             |              |

---

Option Selection

U.S. Dollar 

| Model Code | Description                      |
|------------|----------------------------------|
| ECC        | Aluminum, Buna-N, U.S. Units     |
| ECC/S      | Ductile Iron, Buna-N, U.S. Units |

---

Special Notes

- No Special Notes Available for selected model.
- 
-