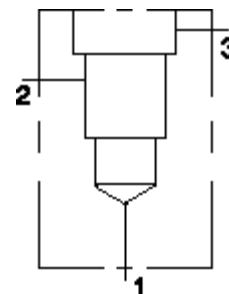


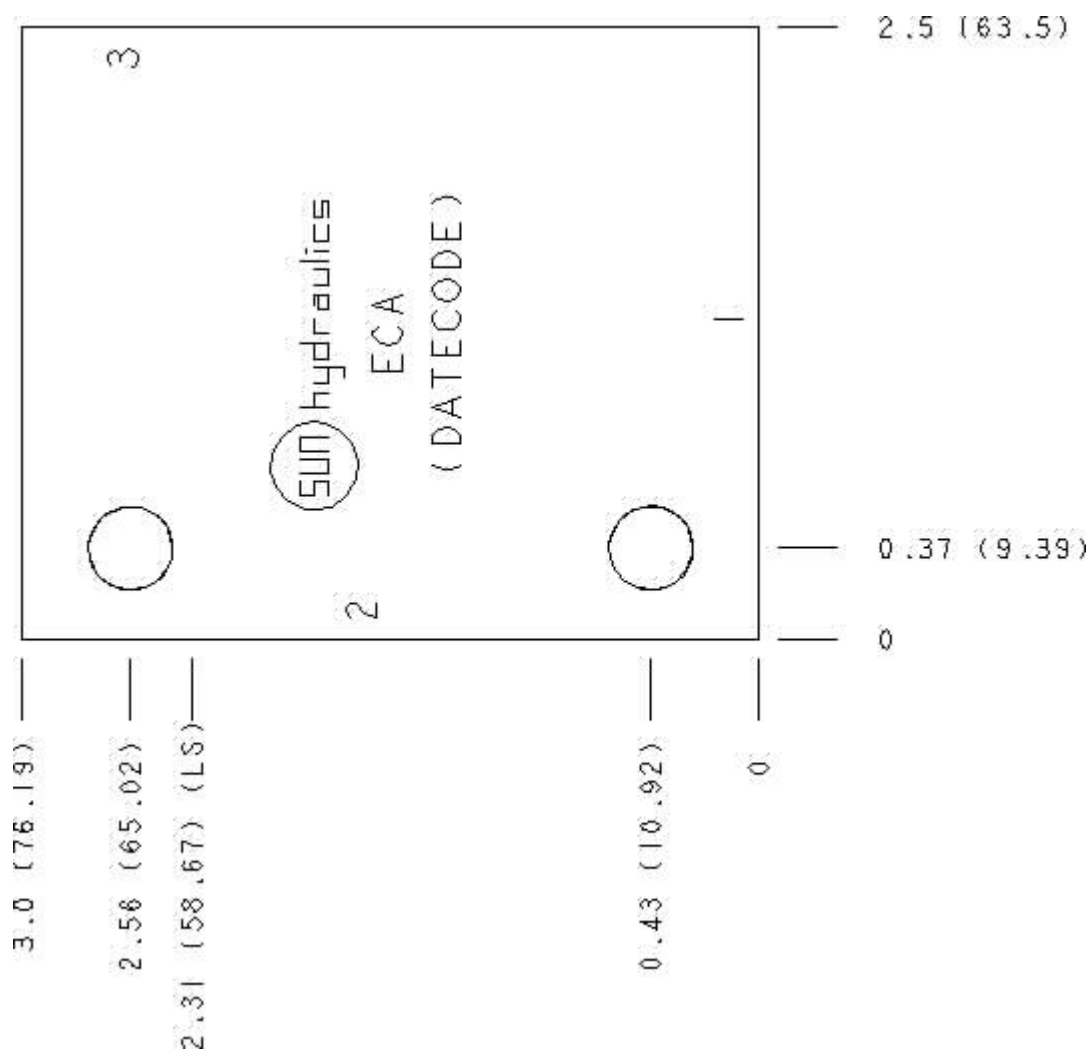
Functional Group:  
 Products : Manifolds : Line mount : Circuit Saver : 3 Port : Ninety Degree

Model:  
 ECA

Aluminum Body Pressure Rating: 3000 psi (210 bar)  
 Ductile Iron Body Pressure Rating: 5000 psi (350 bar)



Face: 6



Cartridge extension measurement is to the centerline of the cartridge.

Port Headings and Sizes

ECA Ports 1 & 2

1/4" NPTF

Technical Data

	U.S. Units	Metric Units
Model Weight	0.76 lb.	0.34 kg.
Cavity	T-11A	
Body Features	Ninety degree	
Body Type	Line mount	
Interface	None	
Open Cavity Quantity	1	
Mounting Hole Diameter	.34 in.	8.6 mm
Mounting Hole Depth	Through	
Mounting Hole Quantity	2	

Option Selection

U.S. Dollar ▼

Model Code	Description
ECA	Aluminum, Buna-N, U.S. Units
ECA/S	Ductile Iron, Buna-N, U.S. Units

Special Notes

- No Special Notes Available for selected model.