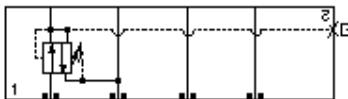
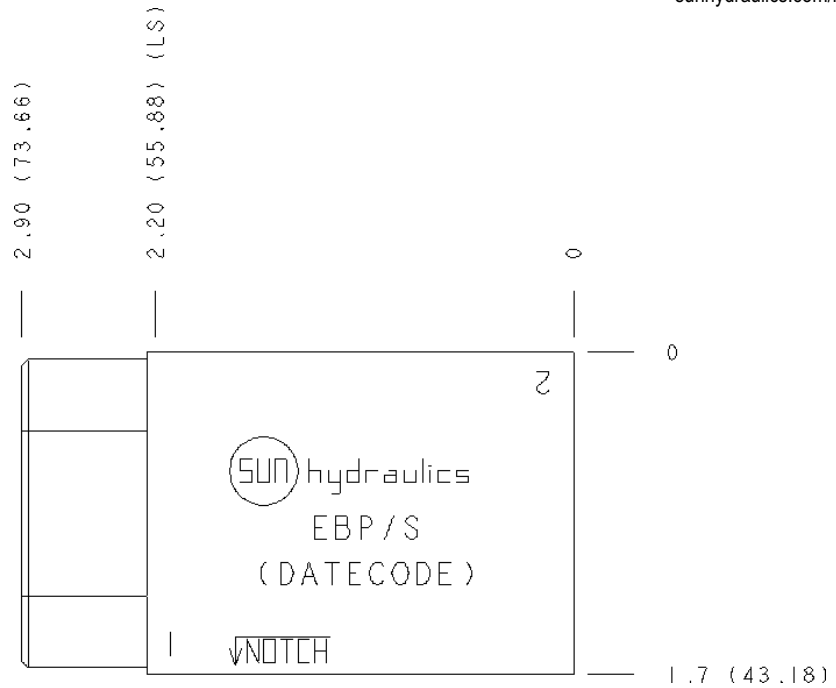
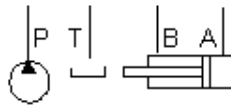


Reducing, On P, drain to T



Reducing/Relieving, On P tank to T



TECHNICAL DATA

Body Type	Sandwich
Interface	ISO 03
Body Features	On P, port 3 to T
Stack Height	1.75 in.
Seal Plate Included (see notes)	Yes
Open Cavities	1
Cavity	T-11A
Port Size	1/4" NPTF
Model Weight	1.67 lb.

CONFIGURATION

/S Modifier 65-45-12 Ductile Iron, Buna-N, Blackened

NOTES

- Stack height value in technical data table includes seal retainer plate.
- **Important:** Carefully consider the maximum system pressure. The pressure rating of the manifold is dependent on the manifold material, with the port type/size a secondary consideration. Manifolds constructed of aluminum are not rated for pressures higher than 3000 psi (210 bar), regardless of the port type/size specified.

PORT DESIGNATORS

Modifiers	Ports
EBP, /S, /V, /Y	Gage Port (Plugged): 1/4" NPTF;
EBP/M, /T, /W, /Z	Gage Port (Plugged): 1/4" BSPP;

INCLUDED COMPONENTS

Part	Description	Quantity
340-003	Pipe Plug	1
500-001-012	O-Ring	4
700-002	Seal Plate	1
811-001-006	Pin	1
850-004-218	Plug	1

CONFIGURATION OPTIONS
Model Code Example: EBP/S

MODIFIER (S)

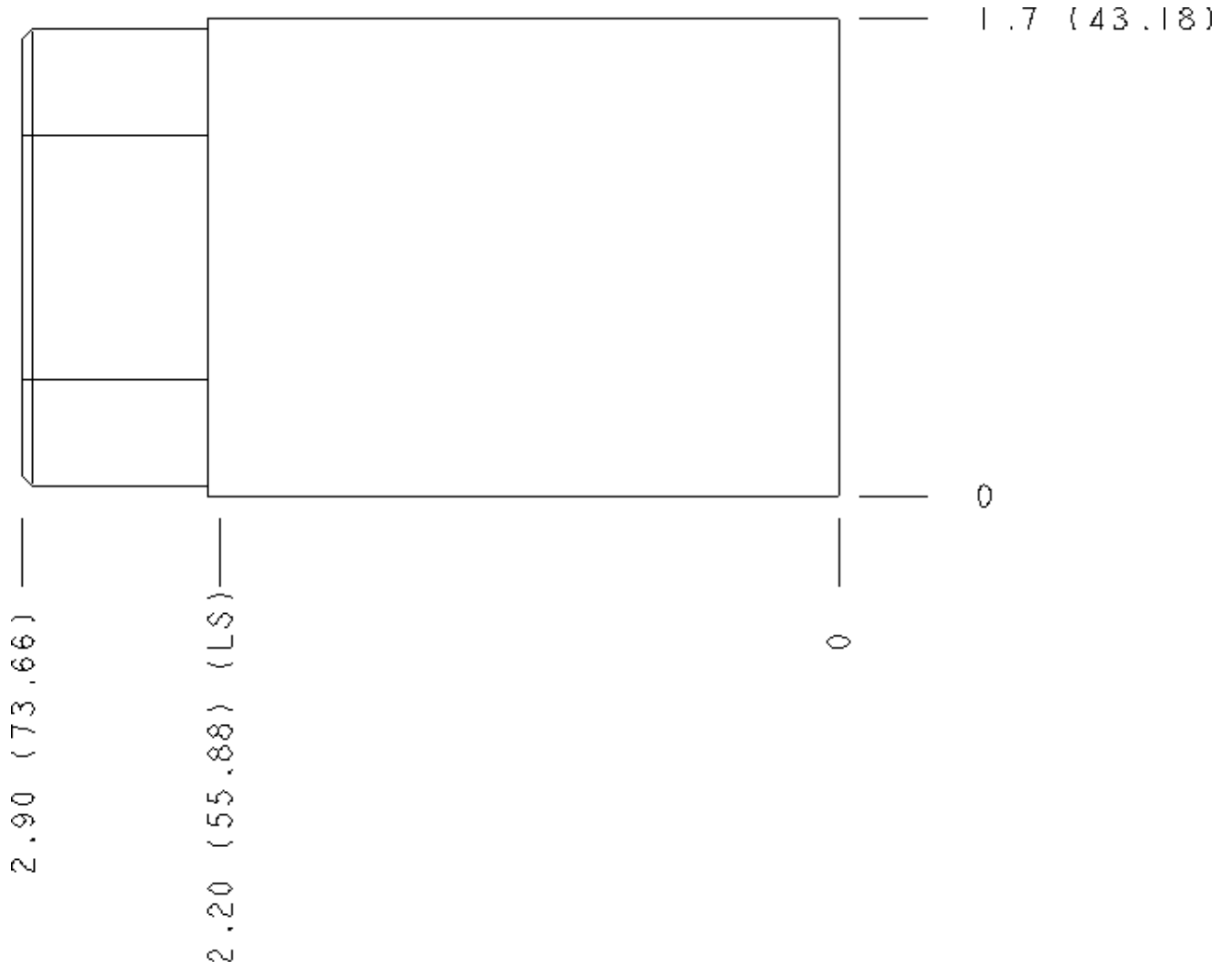
- /S** 65-45-12 Ductile Iron, Buna-N, Blackened
- 6061-T651 Aluminum, Buna-N
- /M** 6061-T651 Aluminum, Metric, Buna-N
- /T** 65-45-12 Ductile Iron, Metric, Buna-N, Blackened
- /V** 6061-T651 Aluminum, Viton
- /W** 65-45-12 Ductile Iron, Metric, Viton, Blackened
- /Y** 65-45-12 Ductile Iron, Viton, Blackened
- /Z** 6061-T651 Aluminum, Metric, Viton

MANIFOLD FACES

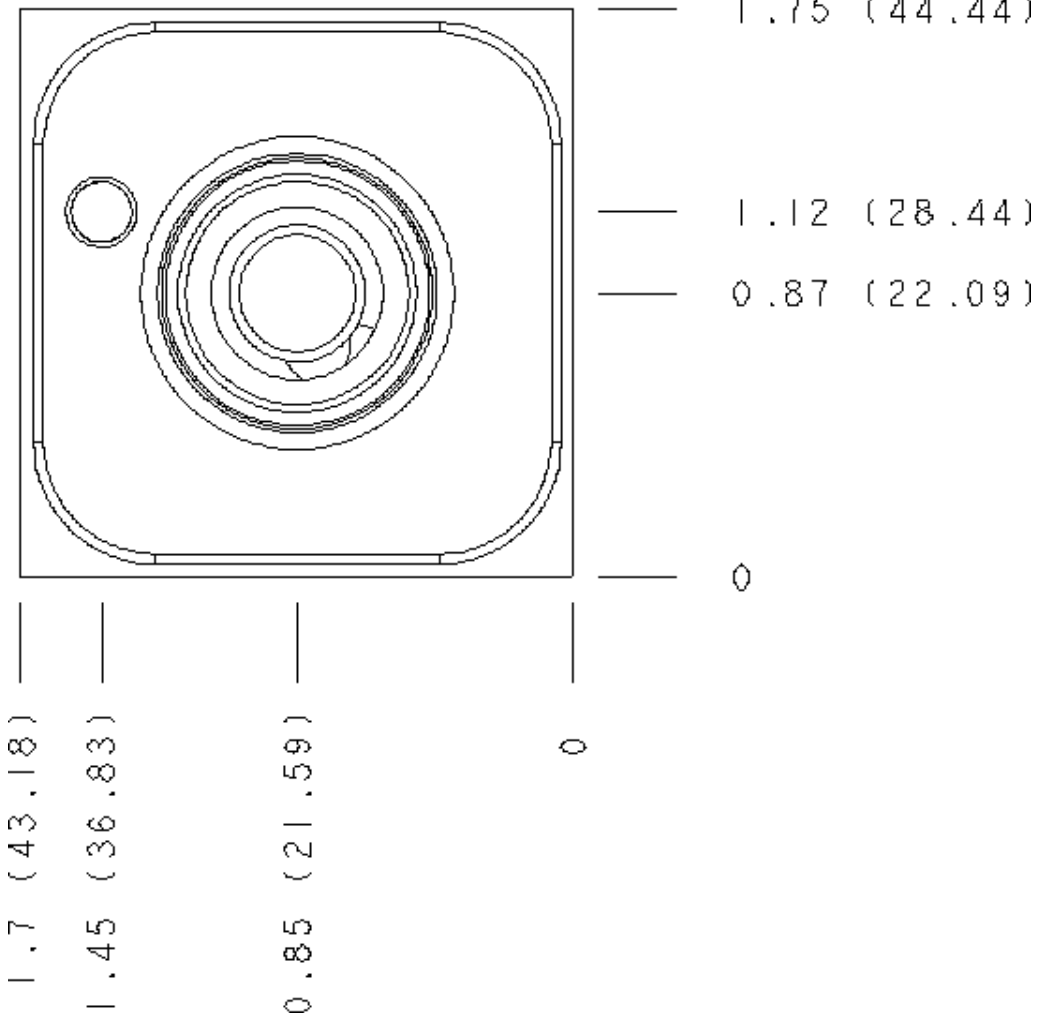
FACE GRID

1	2	3	4
5	6	7	8
9	10	11	12

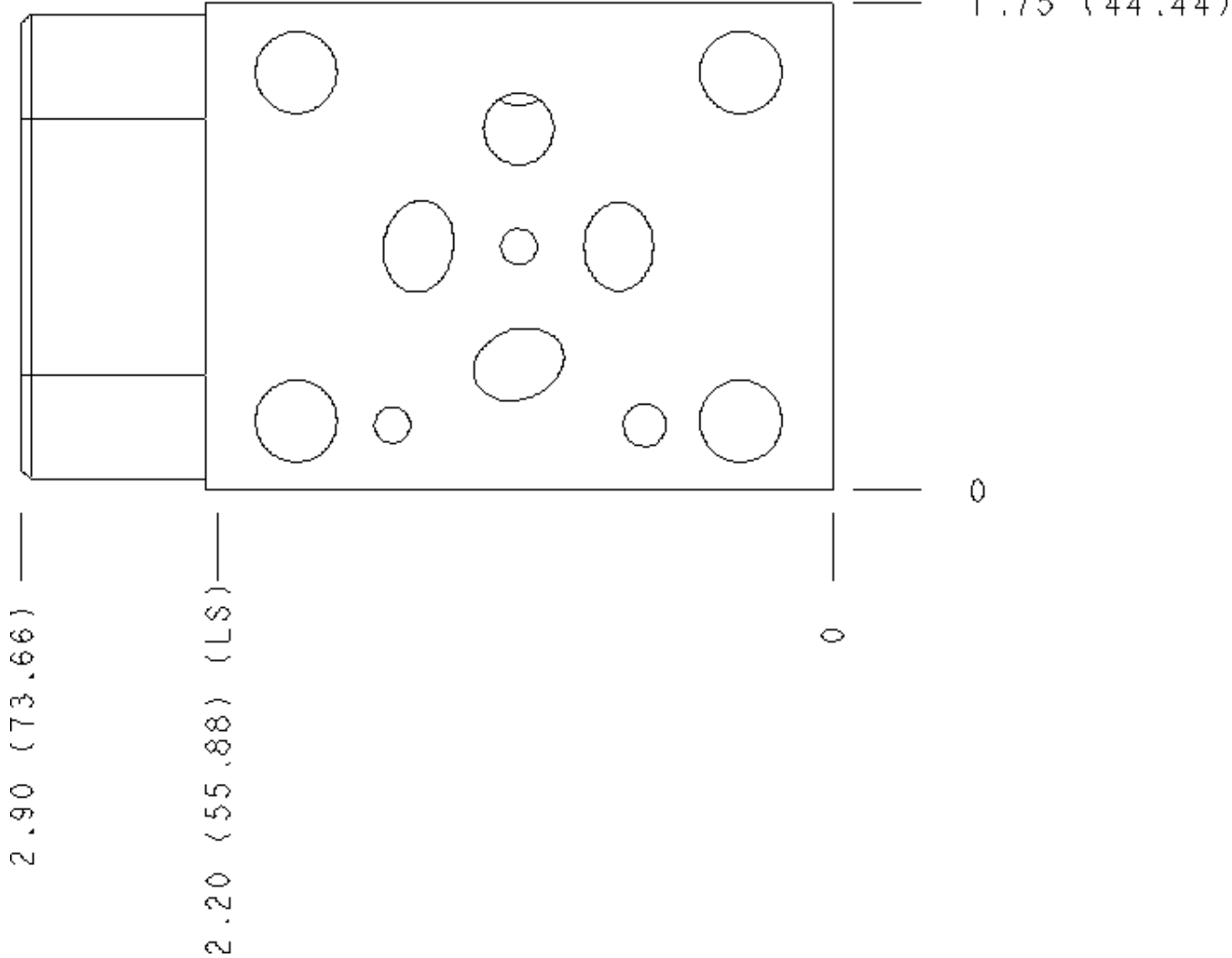
Face 2



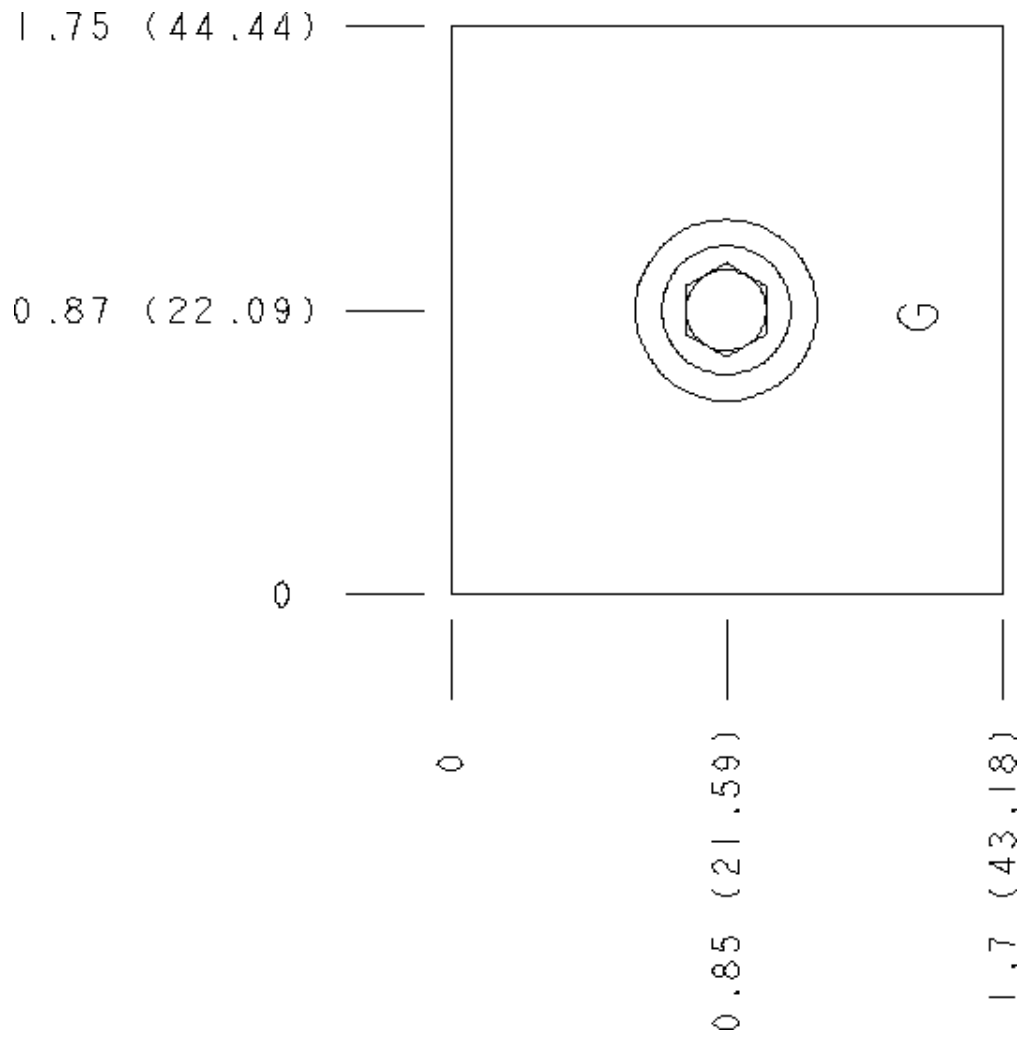
Face 5



Face 6

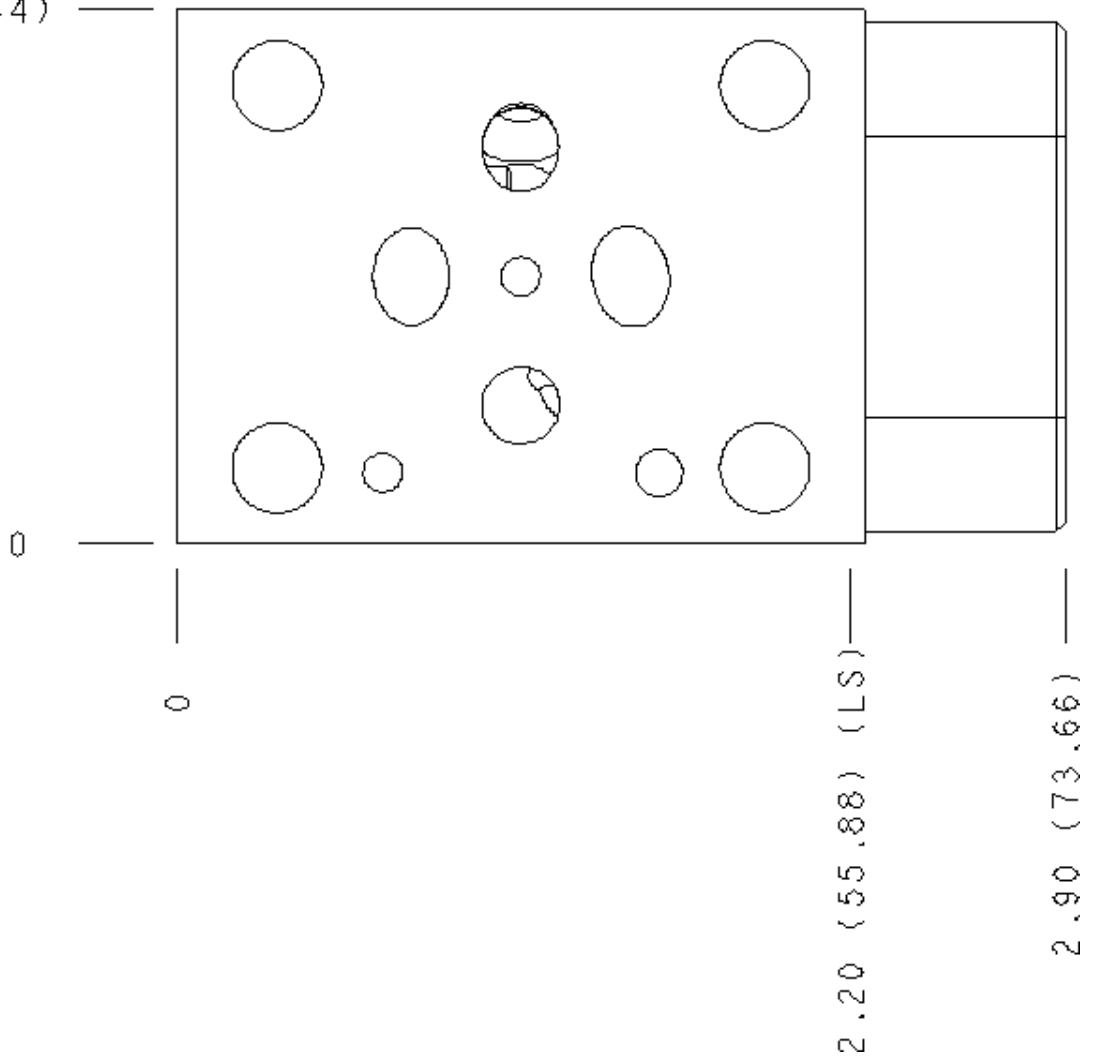


Face 7



Face 8

1.75 (44.44)



Face 10

