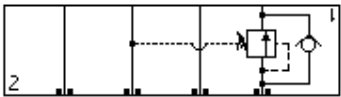
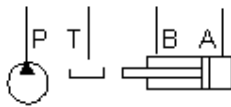


Sequence, In to B with reverse flow check



Sequence, On A with reverse flow check



TECHNICAL DATA

Body Type	Sandwich
Interface	ISO 03
Body Features	Sequence into B or out of A with reverse flow check
Stack Height	1.75 in.
Open Cavities	1
Cavity	T-11A
Model Weight	1.20 lb.

NOTES

Important: Carefully consider the maximum system pressure. The pressure rating of the manifold is dependent on the manifold material, with the port type/size a secondary consideration. Manifolds constructed of aluminum are not rated for pressures higher than 3000 psi (210 bar), regardless of the port type/size specified.

INCLUDED COMPONENTS

Part	Description	Quantity
500-001-012	O-Ring	4
700-002	Seal Plate	1
811-001-006	Pin	1
850-004-250	Plug	2
CXCDXAN	Cartridge	1

CONFIGURATION OPTIONS

Model Code Example: EB5

MODIFIER

- 6061-T651 Aluminum, Buna-N**
- /S** 65-45-12 Ductile Iron, Buna-N, Blackened
- /V** 6061-T651 Aluminum, Viton
- /Y** 65-45-12 Ductile Iron, Viton, Blackened