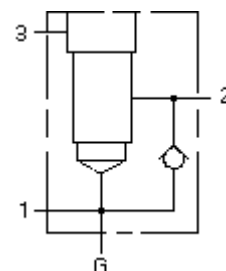


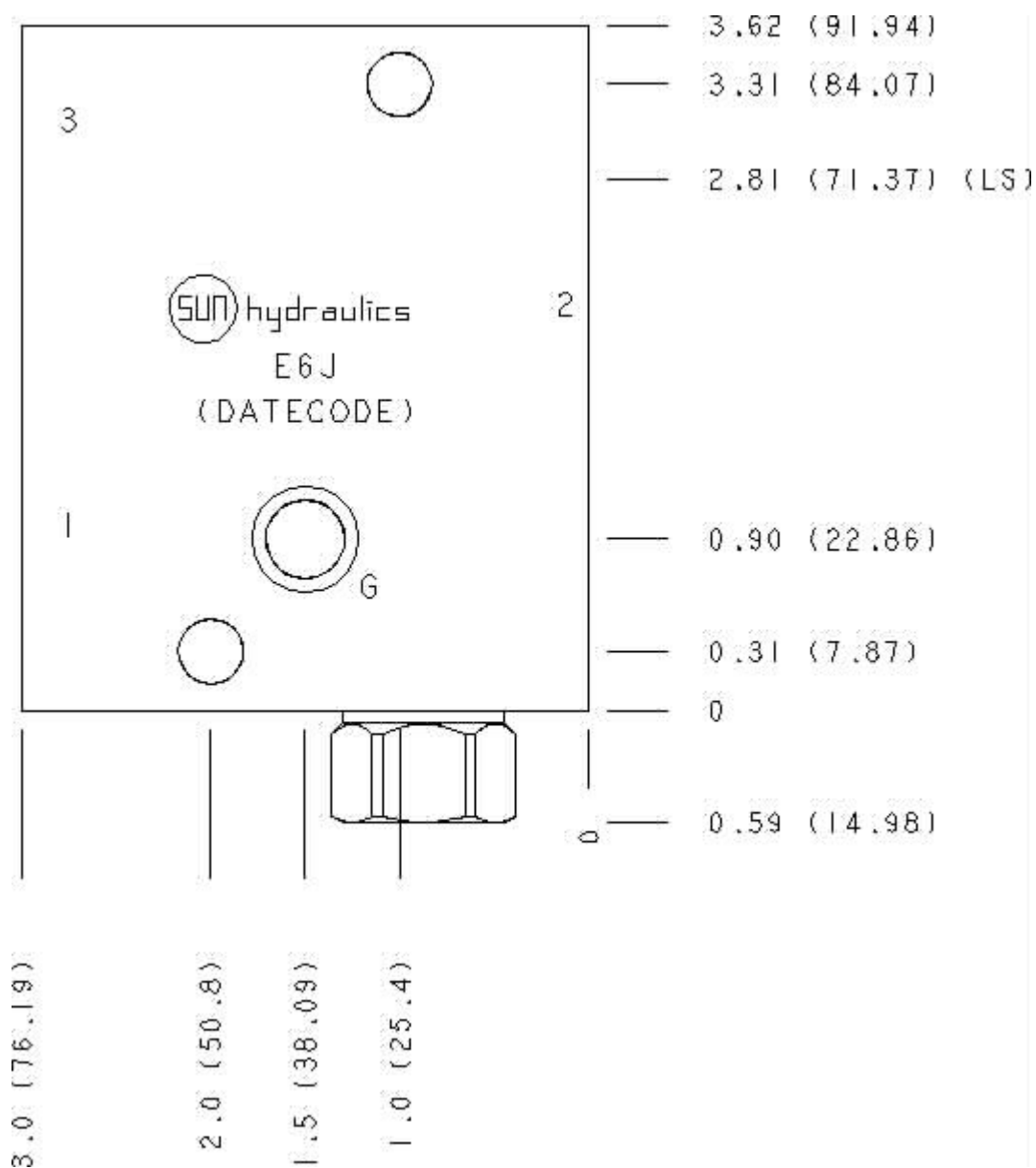
Functional Group:
 Products : Manifolds : Line mount : Sequence : 3 Port : Ninety degree with reverse flow check -
 sequence

Model:
 E6J

Aluminum Body Pressure Rating: 3000 psi (210 bar)
 Ductile Iron Body Pressure Rating: 5000 psi (350 bar)



Face: 6



Cartridge extension measurement is to the centerline of the cartridge.

Port Headings and Sizes

E6J	Ports 1 & 2	SAE 8
E6J	Port 3	SAE 6
E6J	Gage Port	1/4" NPTF

Technical Data

	U.S. Units	Metric Units
Model Weight	1.23 lb.	0.56 kg.
Cavity	T-11A	
Body Features	Ninety degree with reverse flow check - sequence	
Body Type	Line mount	
Interface	None	
Open Cavity Quantity	1	
Reverse Flow Check Cracking Pressure	30 psi	2 bar
Mounting Hole Diameter	.34 in.	8.6 mm
Mounting Hole Depth	Through	
Mounting Hole Quantity	2	

Option Selection

U.S. Dollar ▼

Model Code	Description
E6J	Aluminum, Buna-N, U.S. Units
E6J/V	Aluminum, Viton, U.S. Units
E6J/S	Ductile Iron, Buna-N, U.S. Units
E6J/Y	Ductile Iron, Viton, U.S. Units

Display Components

	Description	Quantity
CXDAXCN	Model	1

Special Notes

- No Special Notes Available for selected model.
-
-