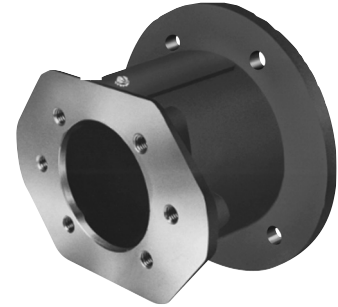


MAGNALOY'S PUMP/ENGINE MOUNTS are available for mounting SAE flange-mount pumps to gasoline and diesel engines with pilot mounting capabilities. Four basic engine pilot mounting configurations are available from inventory determined by the pilot diameter. Optional sizes are available upon request.



Engine Mount Selection Method

1. Check TABLES 2 thru 5 to determine pump flange size.
2. Determine Engine Pilot Group from TABLE 14 (other sizes available, consult factory).
3. Measure the pump shaft length from the shaft end to the flange mounting face and ADD to the engine shaft length measured from shaft end to pilot face. An additional 1/16 inch (minimum) is recommended for shaft end clearance.
4. Refer to the appropriate TABLE (15 thru 18) according to Engine Pilot Group determined in STEP 2, above and locate the applicable pump flange selection from STEP 1, above.
5. Select mount length option (dimension "XM" in tables) based on the minimum length determined in STEP 3, above.
6. Check for proper clearance between the mount inner surfaces and the coupling O.D. (dimension "Z" and "CL" in tables). Dimensional data for Magnaloy Couplings is shown in TABLE 1 for reference. A complete Magnaloy Coupling catalog is available upon request.

TABLE 14 - Engine Pilot Groups

Size	K	J
E575	5.75	6.50
E644	6.437	7.75
E700	7.00	7.75
E787	7.875	9.25

Pilot Group Pilot Ø Bolt Circle Ø

TABLE 15 - E575 Pilot Gasoline and Diesel Engines

ENGINE END DATA		PUMP END DATA					5.00 LENGTH			5.25 LENGTH			6.00 LENGTH **				
AJ	BF	BD	AK	XAK	XAJ2	XBF2	XAJ4	XBF4	MOUNT NO.	CL	XM	MOUNT NO.	CL	XM	MOUNT NO.	CL	XM
6.50	13/32	7.50	5.752						E575504F	4.31	5.00	E575524F	4.56	5.25	E575604F	5.14	6.00
									E575502AA	4.31	5.00	E575522AA	4.56	5.25	E575602AA	5.14	6.00
									E575502A	4.31	5.00	E575522A	4.56	5.25	E575602A	5.14	6.00
									E575502B*	3.93	5.00	E575522B*	4.18	5.25	E575602B	5.14	6.00
									E5755080M	4.31	5.00	E5755280M	4.56	5.25	E5756080M	5.14	6.00
									E5755080MS	4.31	5.00	E5755280MS	4.56	5.25	E5756080MS	5.14	6.00
									E57550100M*	3.93	5.00	E57552100M*	4.18	5.25	E57560100M	5.14	6.00

ENGINE END DATA: AJ, BF, BD, AK
 RADIAL CLEARANCE "Z" = 4.15 "Z" = 4.15 "Z" = 5.00
 *RADIAL CLEARANCE "Z" = 4.10 *"Z" = 4.10

** SOCKET HEAD CAP SCREWS REQUIRED ON ENGINE END - THIS LENGTH ONLY.