

---

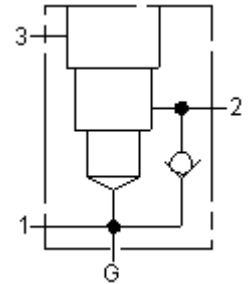
Functional Group:

Products : Manifolds : Line mount : Reducing : 3 Port : Ninety degree with reverse flow check and gage port

Model:  
E2J

---

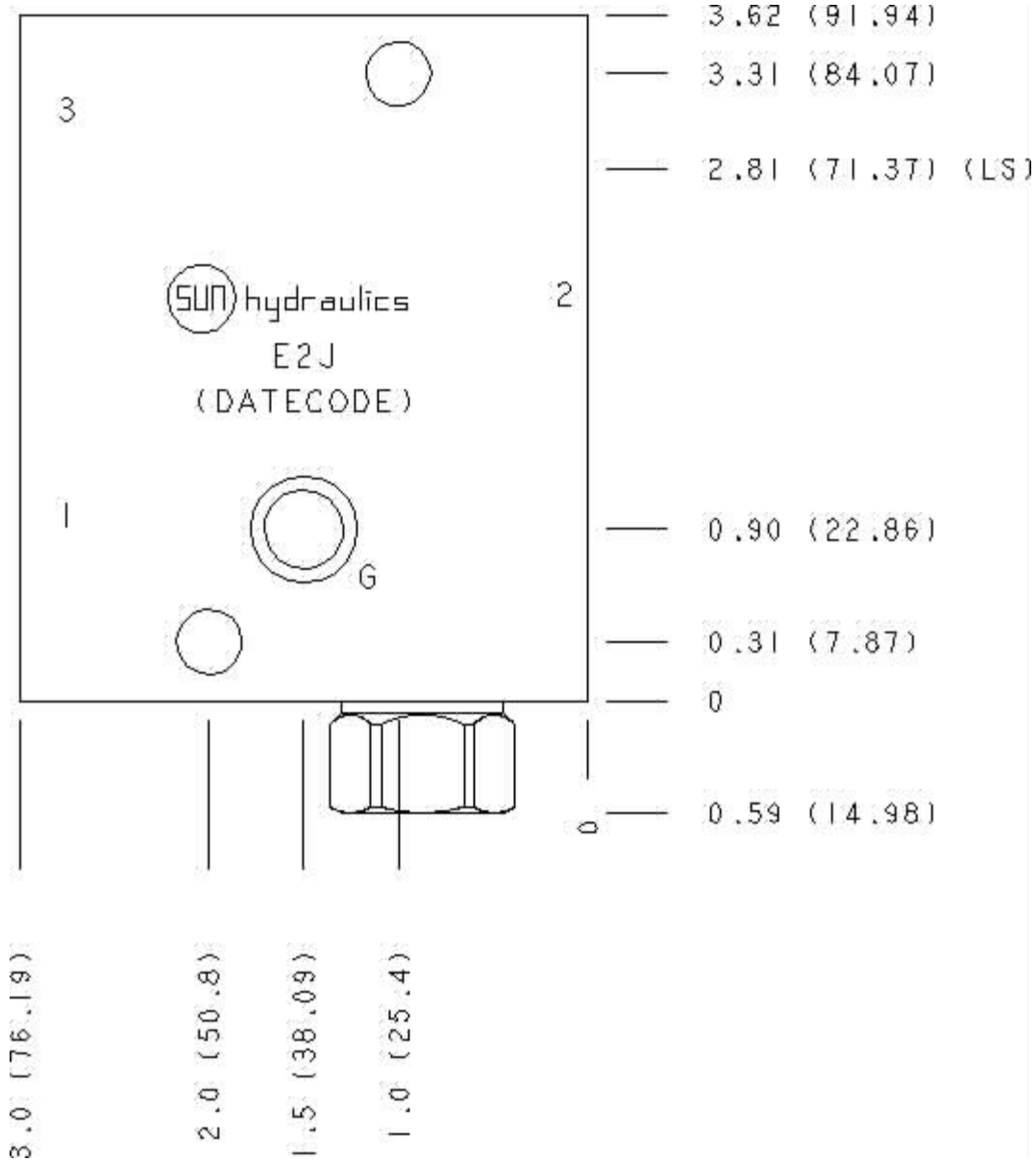
Aluminum Body Pressure Rating: 3000 psi (210 bar)  
Ductile Iron Body Pressure Rating: 5000 psi (350 bar)



---

Face: 6

---



Cartridge extension measurement is to the centerline of the cartridge.

#### Port Headings and Sizes

|     |             |           |
|-----|-------------|-----------|
| E2J | Ports 1 & 2 | SAE 8     |
| E2J | Port 3      | SAE 6     |
| E2J | Gage Port   | 1/4" NPTF |

#### Technical Data

|                        | U.S. Units                                       | Metric Units |
|------------------------|--|--------------|
| Model Weight           | 1.20 lb.   | 0.54 kg.     |
| Cavity                 | T-11A  |              |
| Body Features          | Ninety degree with reverse flow check - reducing |              |
| Body Type              | Line mount                                       |              |
| Interface              | None   |              |
| Open Cavity Quantity   | 1  |              |
| Mounting Hole Diameter | .34 in.  | 8.6 mm       |
| Mounting Hole Depth    | Through  |              |
| Mounting Hole Quantity | 2  |              |

---

Option Selection

U.S. Dollar ▼

---

| Model Code | Description                      |
|------------|----------------------------------|
| E2J        | Aluminum, Buna-N, U.S. Units     |
| E2J/V      | Aluminum, Viton, U.S. Units      |
| E2J/S      | Ductile Iron, Buna-N, U.S. Units |
| E2J/Y      | Ductile Iron, Viton, U.S. Units  |

---

Display Components

---

|         | Description | Quantity |
|---------|-------------|----------|
| CXCDXCN | Model       | 1        |

---

Special Notes

- No Special Notes Available for selected model.
- 
-