

TECHNICAL DATA

Body Type	Line mount
Interface	None
Body Features	Ninety degree with reverse flow check - reducing
Mounting Hole Diameter	.34 in.
Mounting Hole Depth	Through
Mounting Hole Quantity	2

NOTES *Important:* Carefully consider the maximum system pressure. The pressure rating of the manifold is dependent on the manifold material, with the port type/size a secondary consideration. Manifolds constructed of aluminum are not rated for pressures higher than 3000 psi (210 bar), regardless of the port type/size specified.

PORT DESIGNATORS

Modifiers	Ports
E2I, IV	Ports 1 & 2: SAE 6; Gage Port: 1/4" NPTF; Port 3: SAE 6;

INCLUDED COMPONENTS

Part	Description	Quantity
CXCDXCN	Cartridge	1

CONFIGURATION OPTIONS

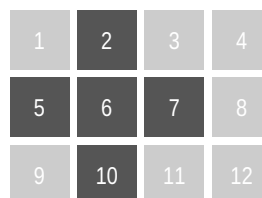
Model Code Example: E2I

MODIFIER

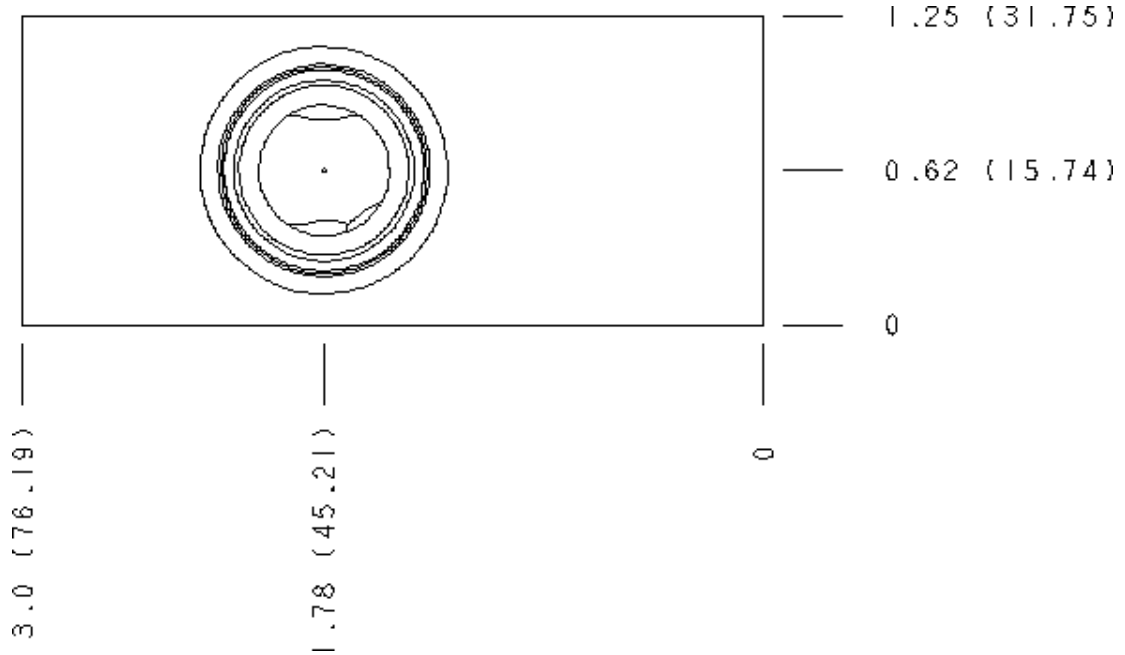
- 6061-T651 Aluminum, Buna-N
- IS 65-45-12 Ductile Iron, Buna-N, Blackened
- IV 6061-T651 Aluminum, Viton
- IY 65-45-12 Ductile Iron, Viton, Blackened

MANIFOLD FACES

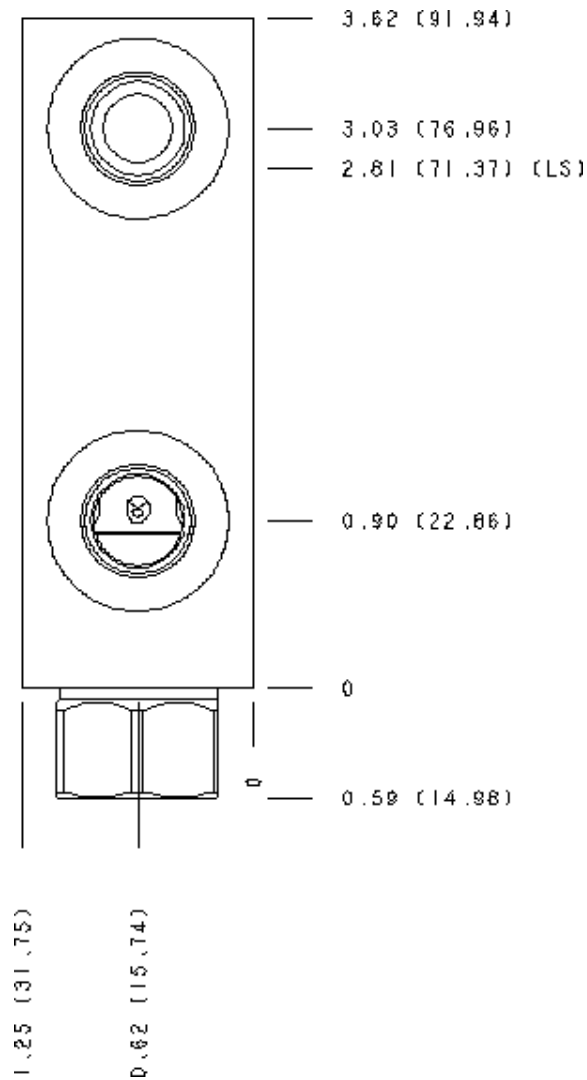
FACE GRID



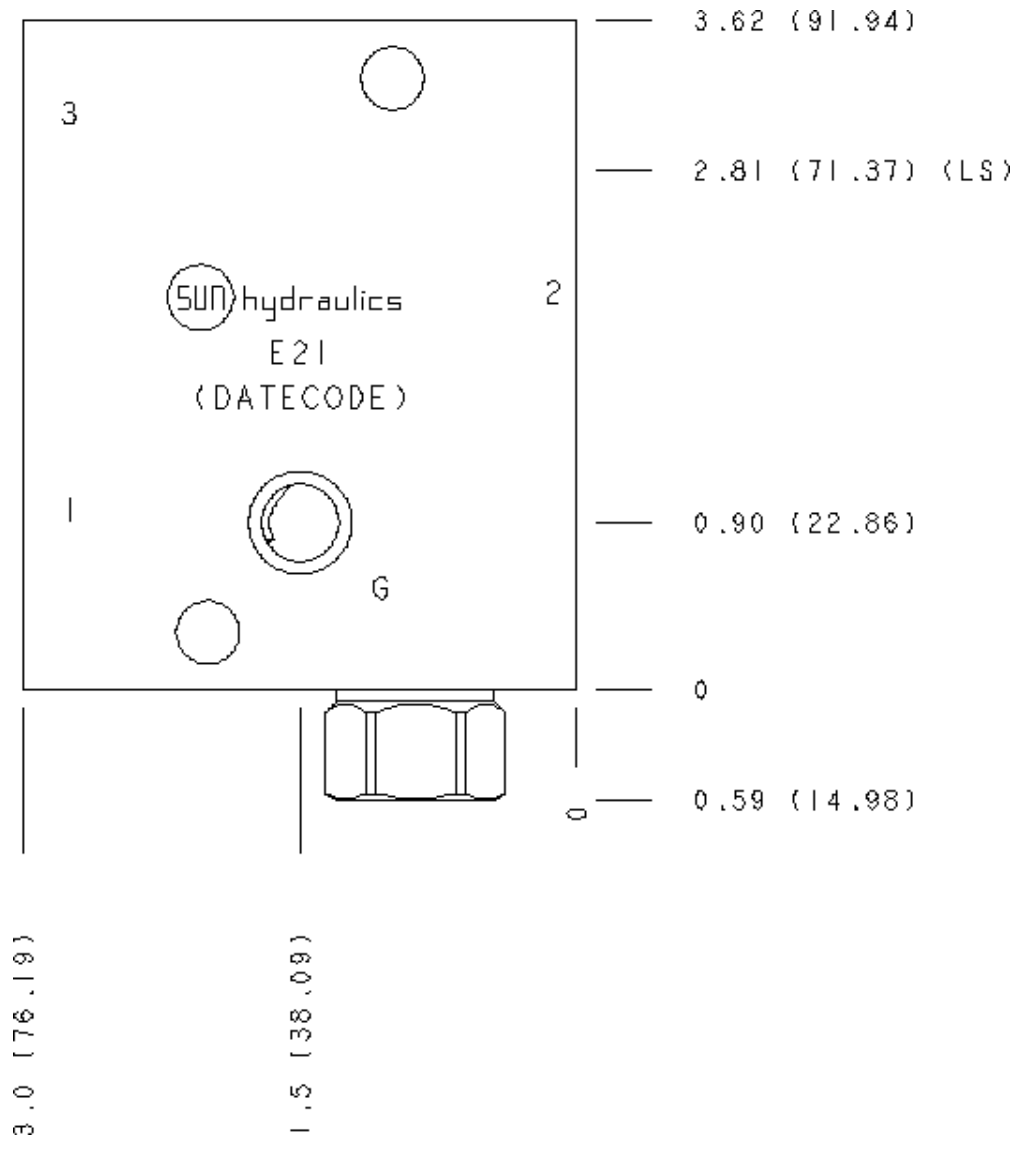
Face 2



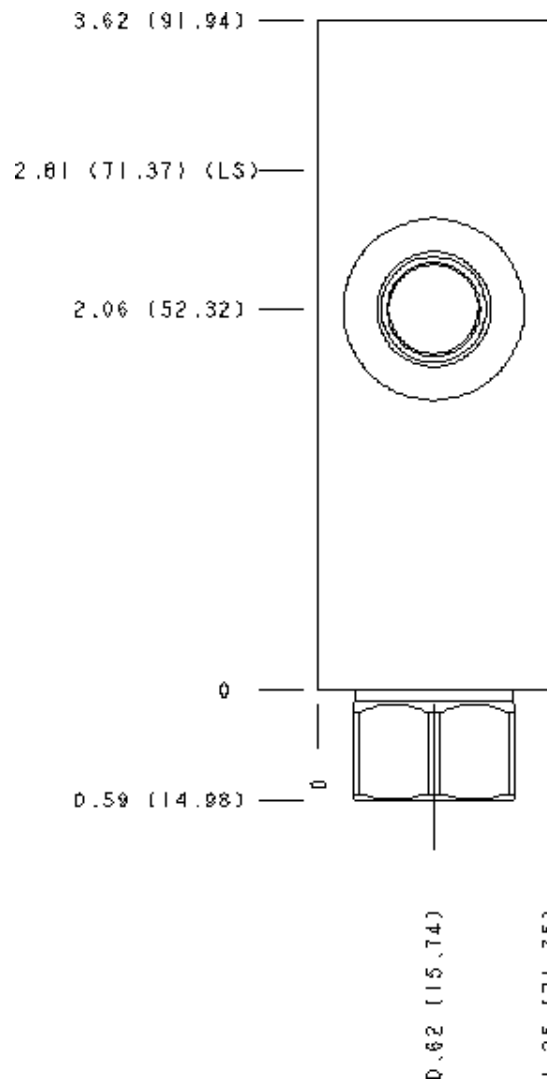
Face 5



Face 6



Face 7



Face 10

