

2-way, direct-acting, solenoid-operated directional poppet valve

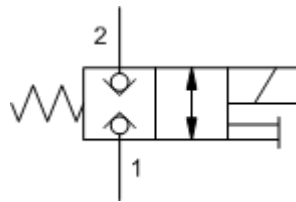
Capacity:
10 gpm (40
L/min.)

Functional Group:
Products : Cartridges : Directional : 2 Way : Poppet, Solenoid Operated

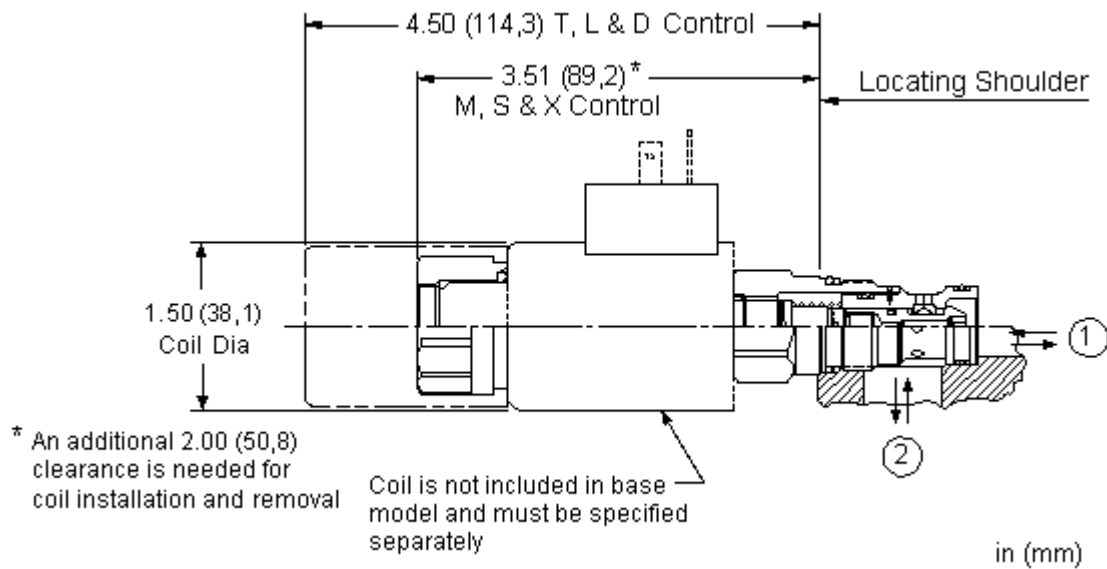
Model:
DTDA-MCN

Product Description

This solenoid-operated, 2-position, 2-way cartridge is a direct-acting, poppet-style valve used to control the direction of flow in a hydraulic circuit. The valve is available in either a normally open or normally closed configuration and is well suited for load holding or load blocking applications where low leakage is a requirement.



[Download](#)



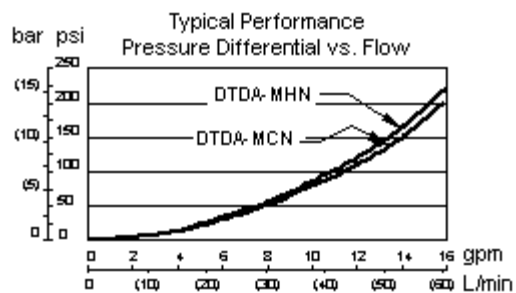
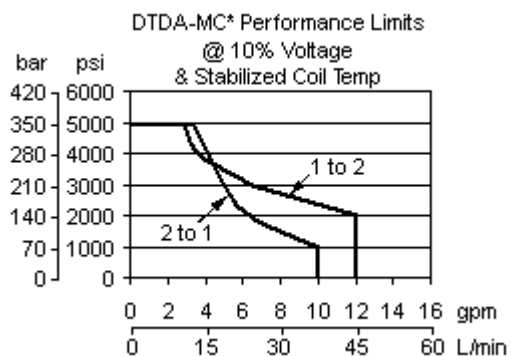
Technical Features

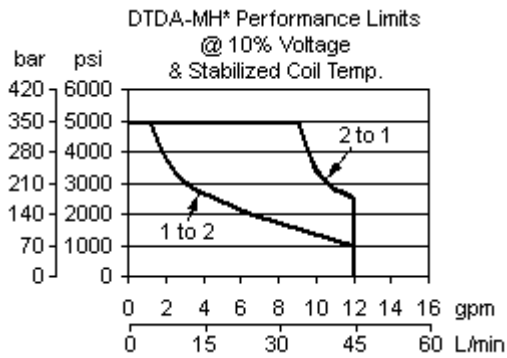
- The solenoid tube assembly is fatigue rated for 5000 psi (350 bar) service.
- This valve is direct actuated and requires no minimum hydraulic pressure for operation.
- A wide variety of coil termination and voltage options are available.
- The solenoid's unique magnetic design results in a high efficiency solenoid, yielding high spool actuating force per Watt expended, leading to reliable valve shifting.

- Valves exhibit extremely low leakage rates; less than 10 drops/min. @ 5000 psi (0,7 cc/min @ 350 bar).
- Suitable for load holding applications.
- This cartridge has several manual override choices, including no manual override. See Option Selection below.
- This valve utilizes a wet armature design. This means that the working fluid surrounds the armature and is exposed to the heat generated by the coil. This can be a factor if the coil is energized for long periods of time. Some fluids, notably water/glycol mixtures, break down at these temperatures over time and form varnishes that will affect the function of the cartridge.
- Coils are interchangeable with other Sun Series 1 solenoid products and can be mounted on the tube in either direction.
- Coil connector options offer ratings up to IP69K. See individual coil product pages for details. Additional weatherized coils and kits are available for more complete environmental protection.
- Incorporates the Sun floating style construction to minimize the possibility of internal parts binding due to excessive installation torque and/or cavity/cartridge machining variations.

Technical Data

	U.S. Units	Metric Units
Cavity	T-13A	
Capacity	10 gpm	40 L/min.
Manual Override Force Requirement	5 lbs/1000 psi @ Port 1	3 kgs/100 bar @ Port 1
Manual Override Stroke	.10 in.	2,5 mm
Maximum Operating Pressure	5000 psi	350 bar
Maximum Valve Leakage at 110 SUS (24 cSt)	10 drops/min.@5000 psi	0,7 cc/min.@350 bar
Response Time - Typical	50 ms	
Series (from Cavity)	Series 1	
Switching Frequency	15000 cycles/hr	
Solenoid Tube Diameter	.75 in.	19 mm
Valve Hex Size	7/8 in.	22,2 mm
Valve Installation Torque	30 - 35 lbf ft	45 - 50 Nm
Seal Kits - Cartridge	Buna: 990-413-007	
Seal Kits - Cartridge	Viton: 990-413-006	
Seal Kits - Coil	Viton: 990-770-006	
Seal Kits - Coil, Weatherized	Viton: 991-056	
Model Weight	0.65 lb.	0.29 kg.





DTDA-MCN

Control

M Manual Override

Spool Configuration

C Normally Closed +0.00

External Material/Seal Material

N Buna-N +0.00

Standard Coil Options (View All)

AMP Junior Timer	Deutsch DT04-2P	DIN 43650 4 pin (Hirschman)	Metri-Pack	SAE J858A	Twin Lead

*** no coil

211	DIN 43650 4 pin (Hirschman) 115 VAC	524	SAE J858A 24 VDC	812	Metri-Pack 12 VDC
212	DIN 43650 4 pin (Hirschman) 12 VDC	528	SAE J858A 28 VDC	814	Metri-Pack 14 VDC
214	DIN 43650 4 pin (Hirschman) 14 VDC	536	SAE J858A 36 VDC	824	Metri-Pack 24 VDC
223	DIN 43650 4 pin (Hirschman) 230 VAC	612	AMP Junior Timer 12 VDC	828	Metri-Pack 28 VDC
224	DIN 43650 4 pin (Hirschman) 24 VDC	614	AMP Junior Timer 14 VDC	836	Metri-Pack 36 VDC
228	DIN 43650 4 pin (Hirschman) 28 VDC	624	AMP Junior Timer 24 VDC	848	Metri-Pack 48 VDC
236	DIN 43650 4 pin	628	AMP Junior Timer 28 VDC	912	Deutsch DT04-2P 12 VDC
		636	AMP Junior Timer	914	Deutsch DT04-2P

	(Hirschman) 36 VDC	36 VDC		14 VDC	
248	DIN 43650 4 pin (Hirschman) 48 VDC	712	Twin Lead 12 VDC	924	Deutsch DT04-2P 24 VDC
297	DIN 43650 4 pin (Hirschman) 24 VAC	724	Twin Lead 24 VDC	928	Deutsch DT04-2P 28 VDC
298	DIN 43650 4 pin (Hirschman) 220 VDC	728	Twin Lead 28 VDC	936	Deutsch DT04-2P 36 VDC
299	DIN 43650 4 pin (Hirschman) 127 VDC	736	Twin Lead 36 VDC	948	Deutsch DT04-2P 48 VDC
514	SAE J858A 14 VDC				

Additional Options ([Click Here](#))

Additional Coils

512	SAE J858A 12 VDC	71239	Twin Lead to Connector, 9 inch lead length	72429	Twin Lead to Connector, 9 inch lead length
548	SAE J858A 48 VDC	71299	Twin Lead to Deutsch connector, 9 inch lead length	72439	Twin Lead to Connector, 9 inch lead length
648	AMP Junior Timer 48 VDC	714	Twin Lead 14 VDC	72499	Twin Lead to Deutsch connector, 9 inch lead length
71219	Twin Lead to Delphi Weather-Pack Connector, 9 inch lead length, 12 VDC	72419	Twin Lead to Delphi Weather-Pack Connector, 9 inch lead length 24 VDC	748	Twin Lead 48 VDC
71229	Twin Lead to Connector, 9 inch lead length				

Stainless material/seal options not available for this model

Related Models

[DTDAS](#)

Special Notes

- No Special Notes Available for selected model.

