

Spring offset, 2-position, high side shuttle valve

Capacity:
15 gpm (60 L/min.)

Functional Group:

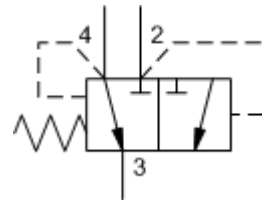
Products : Cartridges : Shuttle Valve : 4 Port : High Side, Spring Offset

Model:

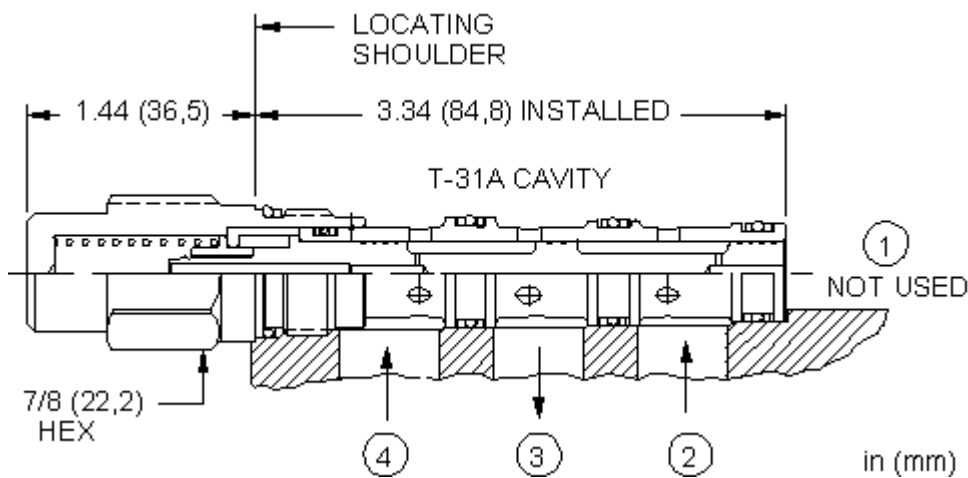
DSCO-XCN

Product Description

Spring-offset, high-side shuttle cartridges are 2-position valves that have a normal (offset) position that connects the common port (port 3) to work port 4, with work port 2 blocked. When the pressure at port 2 rises above the pressure at port 4, the cartridge shifts to connect the common port to port 2 with port 4 then blocked.



Download

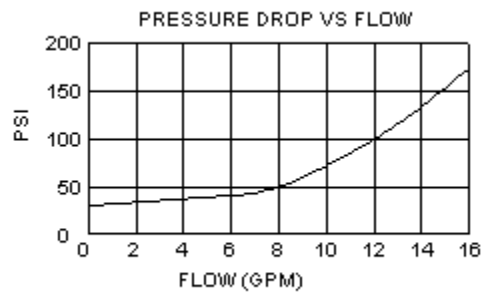


Technical Features

- Although this valve goes into a 4-port cavity, the nose (port 1) is not used.
- Incorporates the Sun floating style construction to minimize the possibility of internal parts binding due to excessive installation torque and/or cavity/cartridge machining variations.

Technical Data

	U.S. Units	Metric Units
Model Weight	0.40 lb.	0.18 kg.
Cavity	T-31A	
Capacity	15 gpm	60 L/min.
Maximum Operating Pressure	5000 psi	350 bar
Minimum Pilot Pressure Required to Shift Valve	30 psi	2 bar
Series (from Cavity)	Series 1	
Valve Hex Size	7/8 in.	22,2 mm
Valve Installation Torque	30 - 35 lbf ft	45 - 50 Nm
Seal Kits	Buna: 990-031-007	
Seal Kits	Viton: 990-031-006	



DSCO-XCN

Control

Minimum Control Pressure

External Material/Seal
Material

X Not Adjustable +0.00

C 30 psi (2 bar) +3.00

N Buna-N +0.00