

Low side, 3-position, hot oil shuttle valve

Capacity:
10 gpm (40 L/min.)

Functional Group:

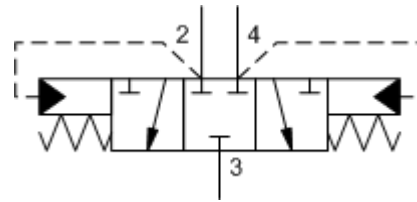
Products : Cartridges : Shuttle Valve : 4 Port : Low Side (Hot Oil), 3 Position

Model:

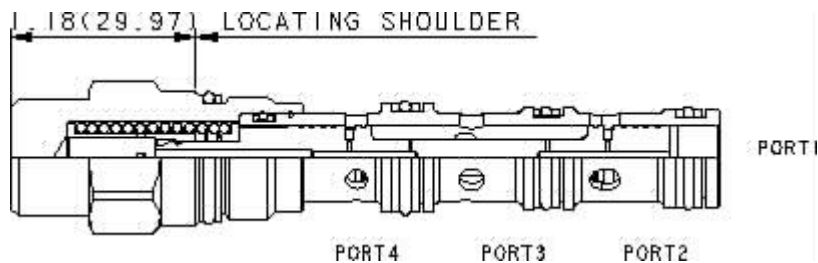
DSCH-XHN

Product Description

Low-side (hot oil) shuttle cartridges allow hot oil to be diverted from the low pressure side of a closed loop system. When both work ports (ports 2 and 4) are at equal pressures the valve is spring-centered to an all-ports-blocked position. When one of the work ports (port 2 or 4) sees a higher pressure the opposite work port is connected to the common port (port 3).



Download

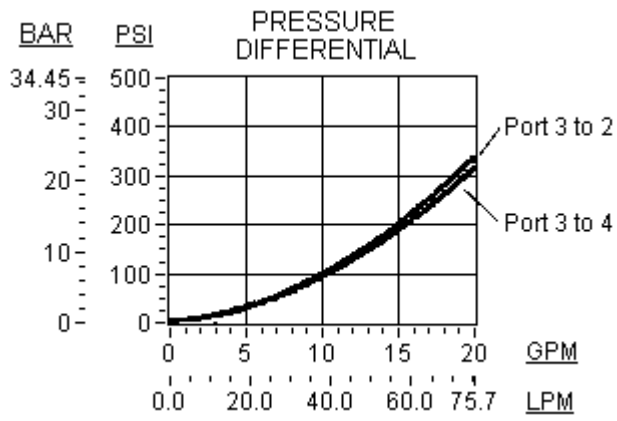


Technical Features

- The spool incorporates a hydraulic stop that eliminates mechanical impact and therefore the potential for internal damage.
- A unique feature due to the hydraulic stop is that the hot oil relief setting can be confirmed with the transmission in neutral.
- Although this valve goes into a 4-port cavity, the nose (port 1) is not used.
- The hydraulic stop results in a small pilot flow from the high side work port (port 2 or 4) to the common port (port 3).
- NOTE: Low shift values can potentially result in charge pump pressure alone inadvertently shifting the valve. Use care when selecting shift pressure.
- Incorporates the Sun floating style construction to minimize the possibility of internal parts binding due to excessive installation torque and/or cavity/cartridge machining variations.

Technical Data

	U.S. Units	Metric Units
Model Weight	0.37 lb.	0.17 kg.
Cavity	T-31A	
Capacity	10 gpm	40 L/min.
Maximum Operating Pressure	5000 psi	350 bar
Pilot Flow	23 in ³ /min.	0,38 L/min.
Series (from Cavity)	Series 1	
Valve Hex Size	7/8 in.	22,2 mm
Valve Installation Torque	30 - 35 lbf ft	45 - 50 Nm
Seal Kits	Buna: 990-031-007	
Seal Kits	Viton: 990-031-006	



DSCH-XHN

Control

Shifting Pressure

External Material/Seal
Material

X Not Adjustable +0.00

H 200 psi (14 bar) +0.00

N Buna-N +0.00