

## 3-way, 2-position, pilot operated, directional valve with internal drain to port 3 (1 blocked, 2 to 3 open)

Capacity:  
7 gpm (28 L/min.)

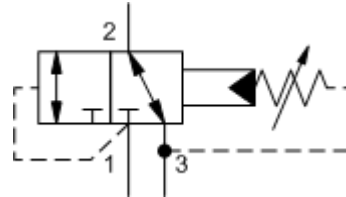
Functional Group:

Products : Cartridges : Directional; DP\*\*, DR\*\*, DV\*\* : 3 Way - 3 Port - 1 Blocked, 2 to 3 Open : Pilot Operated

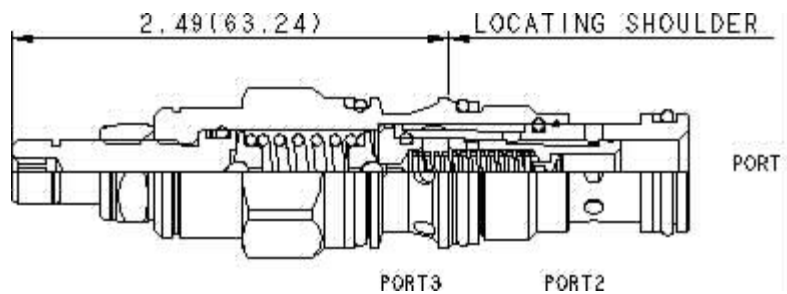
Model:  
DPBC-LAN

### Product Description

Pilot-operated, 3-way directional cartridges (1 blocked, 2 to 3 open) are switching devices typically used in moderate flow circuits. They can be used by themselves or to actuate larger pilot-operated directional cartridges or logic cartridges. The valve shifts when the pressure differential between port 1 and port 3 exceeds the setting.



Download



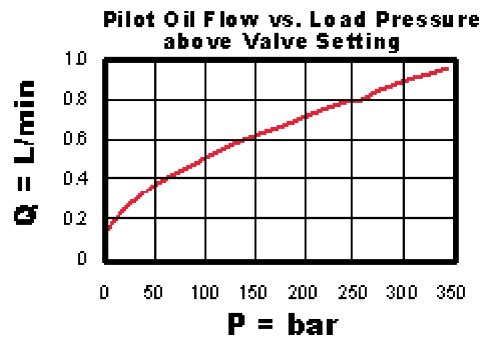
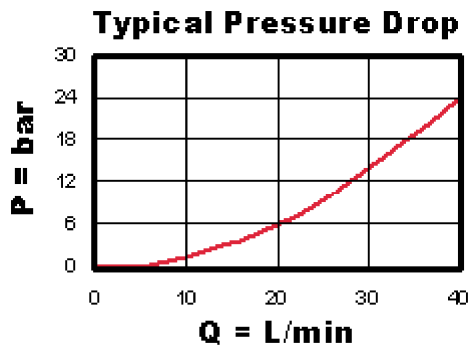
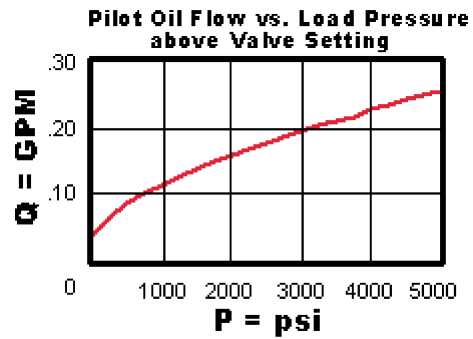
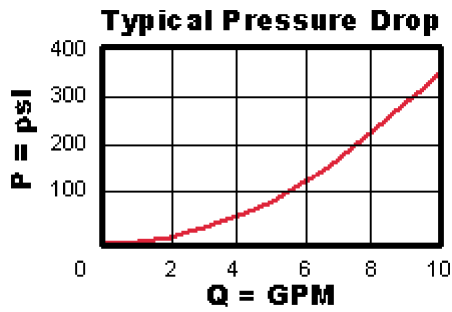
### Technical Features

- Pressure at port 3 is directly additive to the setting of the valve. Because of this, port 3 may not be useable as a work port in your circuit. If this is a consideration, the 4 port version of this valve may be a solution.
- Port 3 can be blocked to prevent the valve from shifting.
- When pilot pressure exceeds the valve setting, pilot flow may be a consideration. See performance curves for pilot consumption vs. load pressure above the valve setting. If this is a problem, the direct acting version of this valve would be a solution.
- Direct-acting and pilot-operated versions of these valves are interchangeable. They fit the same cavities and have the same flow paths.
- This valve is not bistable; it is capable of modulating between the two positions shown.
- Incorporates the Sun floating style construction to minimize the possibility of internal parts binding due to excessive installation torque and/or cavity/cartridge machining variations.

### Technical Data

	U.S. Units	Metric Units
Model Weight	0.32 lb.	0.15 kg.
Cavity	T-11A	
Capacity	7 gpm	28 L/min.
Adjustment - Number of Clockwise Turns to Increase Setting	5	
Control Pilot Flow	7 - 10 in <sup>3</sup> /min.	0,11 - 0,16 L/min.
Factory Pressure Settings Established at	4 gpm	15 L/min.
Maximum Operating Pressure	5000 psi	350 bar
Maximum Valve Leakage at 110 SUS (24 cSt)	1 in <sup>3</sup> /min.@1000 psi	15 cc/min.@70 bar
Series (from Cavity)	Series 1	

Valve Hex Size	7/8 in.	22,2 mm
Valve Installation Torque	30 - 35 lbf ft	45 - 50 Nm
Adjustment Screw Hex Socket Size	5/32 in.	4 mm
Adjustment Nut Hex Size	9/16 in.	15 mm
Adjustment Nut Torque	108 lbf in.	12 Nm
Seal Kits	Buna: 990-011-007	
Seal Kits	Viton: 990-011-006	



## DPBC-LAN

Control

Adjustment Range

External Material/Seal Material

L Standard Screw Adjustment	+0.00	100 - 3000 psi (7 - 210 A bar), 1000 psi (70 bar) Standard Setting	+0.00	N Buna-N +0.00
-----------------------------	-------	--	-------	----------------

If the material/seal is P, the control must be L or C  
 If the material/seal is W, the control must be L or C

Customer specified setting stamped on hex \$1.10

- Explanation of Sun cartridge control options - US units.
- Explanation of Sun cartridge control options - metric units.

