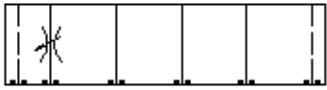
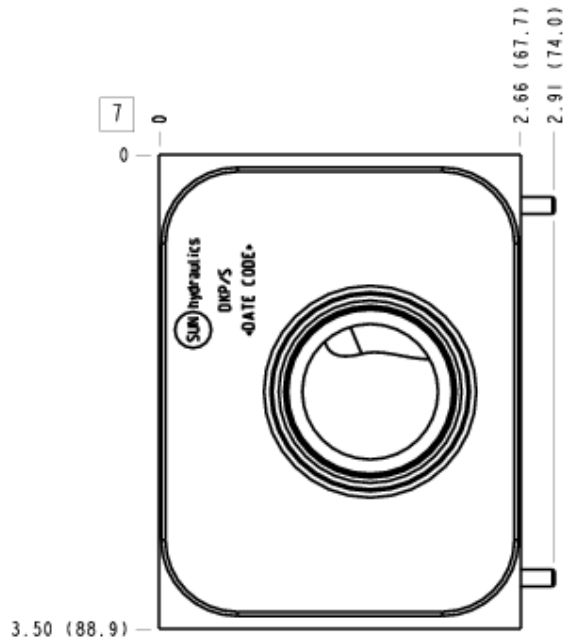
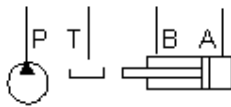


Check, On P



Flow Control, Meter-In P



**TECHNICAL DATA**

Body Type	Sandwich
Interface	ISO 07
Body Features	On P
Stack Height	2.74 in.
Seal Plate Included (see notes)	Yes
Open Cavities	1
Cavity	T-16A
Model Weight	9.90 lb.

**CONFIGURATION**

/S Modifier 65-45-12 Ductile Iron, Buna-N, Chem. Black

**NOTES**

- Stack height value in technical data table includes seal retainer plate.
- For check valve application, use only with CX\*A check valves - free flow nose to side.
- **Important:** Carefully consider the maximum system pressure. The pressure rating of the manifold is dependent on the manifold material, with the port type/size a secondary consideration. Manifolds constructed of aluminum are not rated for pressures higher than 3000 psi (210 bar), regardless of the port type/size specified.

## INCLUDED COMPONENTS

Part	Description	Quantity
500-001-111	O-Ring	2
500-001-118	O-Ring	4
700-006	Seal Plate	1
811-001-006	Pin	2

## CONFIGURATION OPTIONS

Model Code Example: DKP/S

MODIFIER (S)

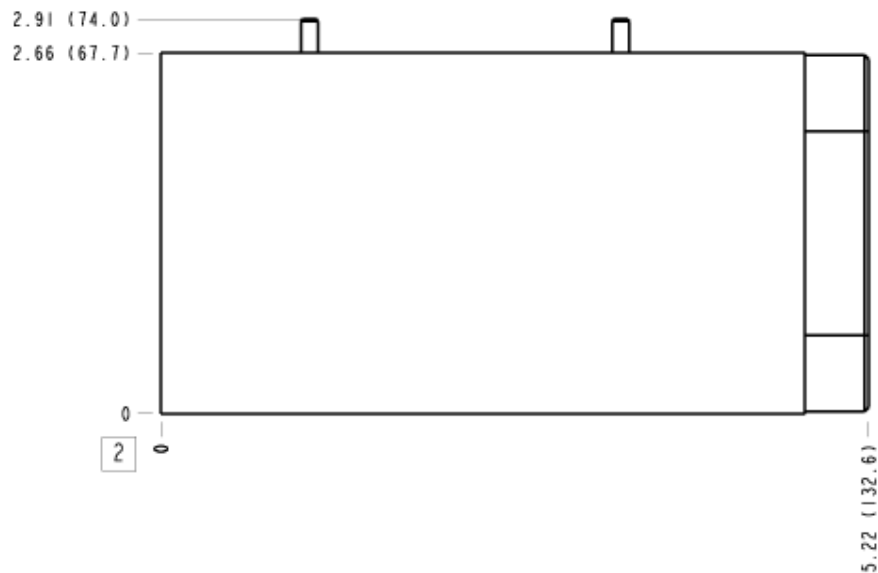
- /S** 65-45-12 Ductile Iron, Buna-N, Chem. Black  
6061-T651 Aluminum, Buna-N
- /11** 6061-T651 Aluminum, Buna-N, Clear Anodize - Per MIL SPEC 8625F Type II, Class I
- /10** 6061-T651 Aluminum, Buna-N, Black Anodize - Per MIL SPEC 8625F Type II, Class II
- /V** 6061-T651 Aluminum, Viton
- /16** 6061-T651 Aluminum, Viton, Clear Anodize - Per MIL SPEC 8625F Type II, Class I
- /15** 6061-T651 Aluminum, Viton, Black Anodize - Per MIL SPEC 8625F Type II, Class II
- /S3** 65-45-12 Ductile Iron, Buna-N, Trivalent Clear Zinc with Top Sealer
- /Y** 65-45-12 Ductile Iron, Viton, Chem. Black
- /Y3** 65-45-12 Ductile Iron, Viton, Trivalent Clear Zinc with Top Sealer

## MANIFOLD FACES

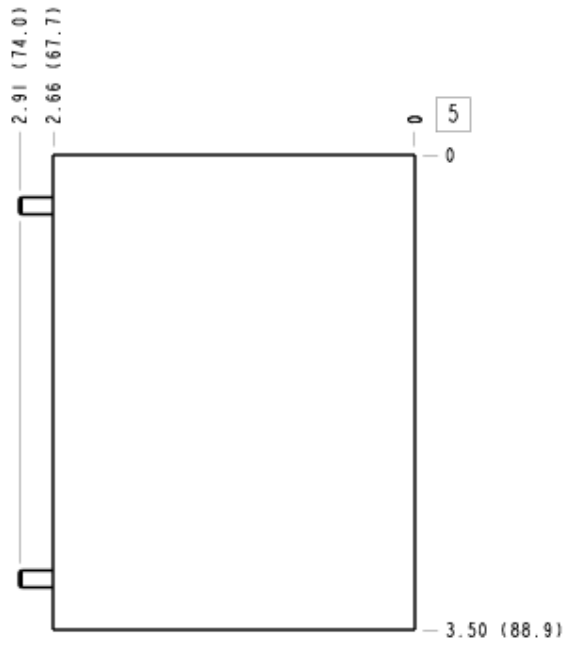
### FACE GRID

1	2	3	4
5	6	7	8
9	10	11	12

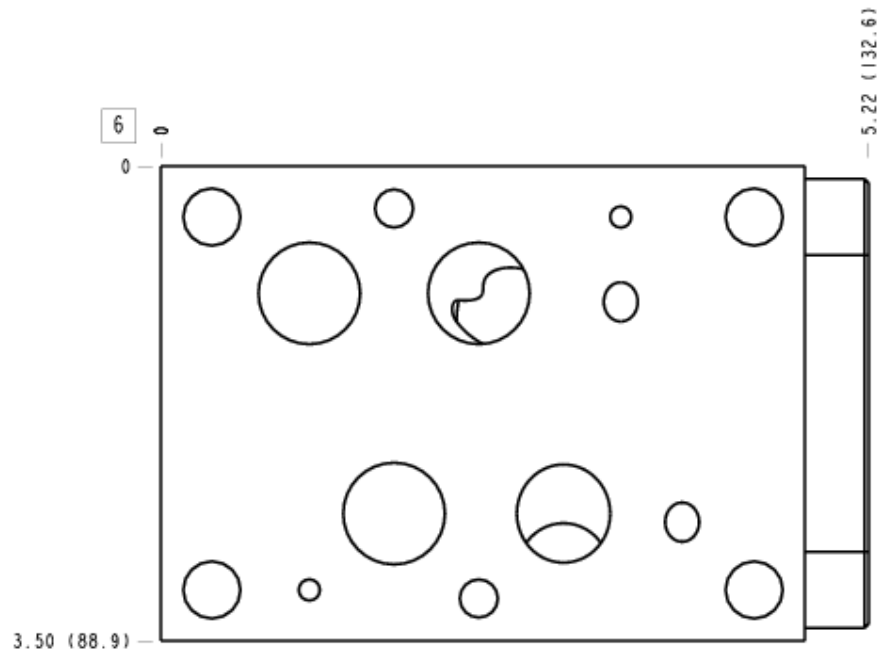
### Face 2



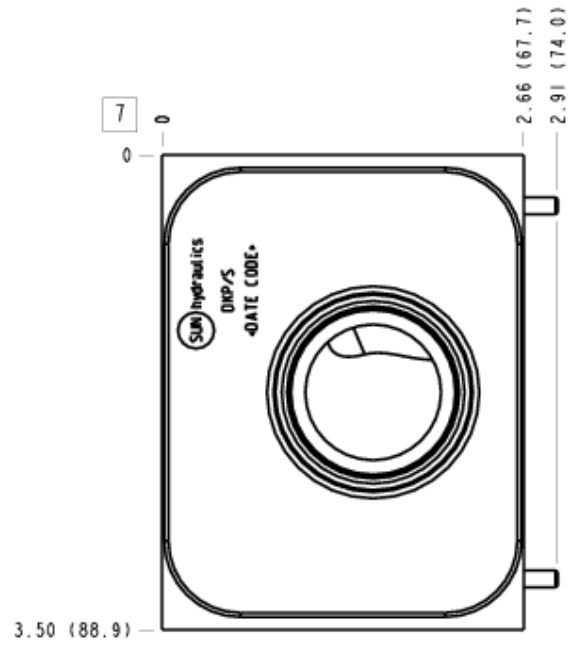
### Face 5



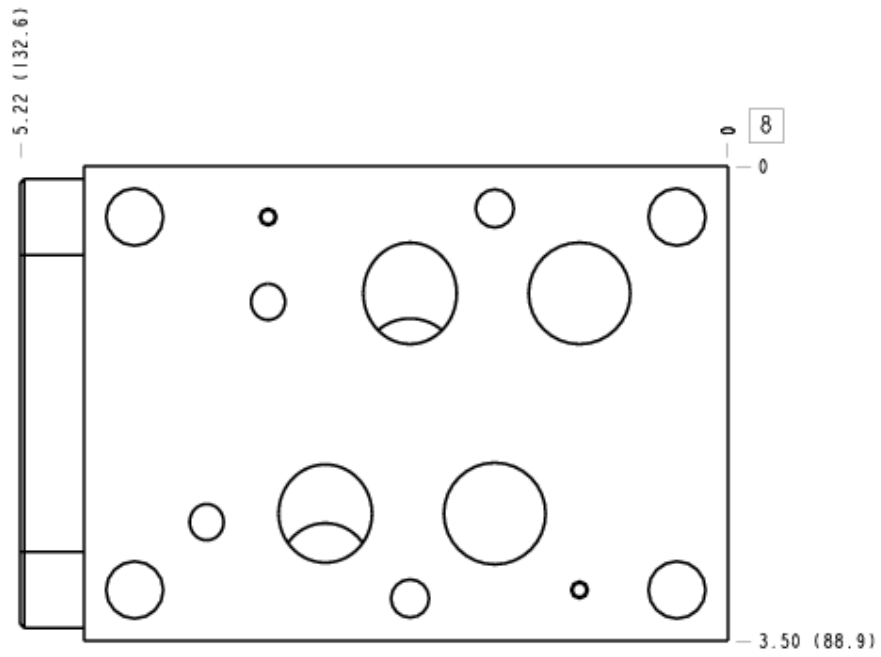
### Face 6



### Face 7



### Face 8



# Face 10

