

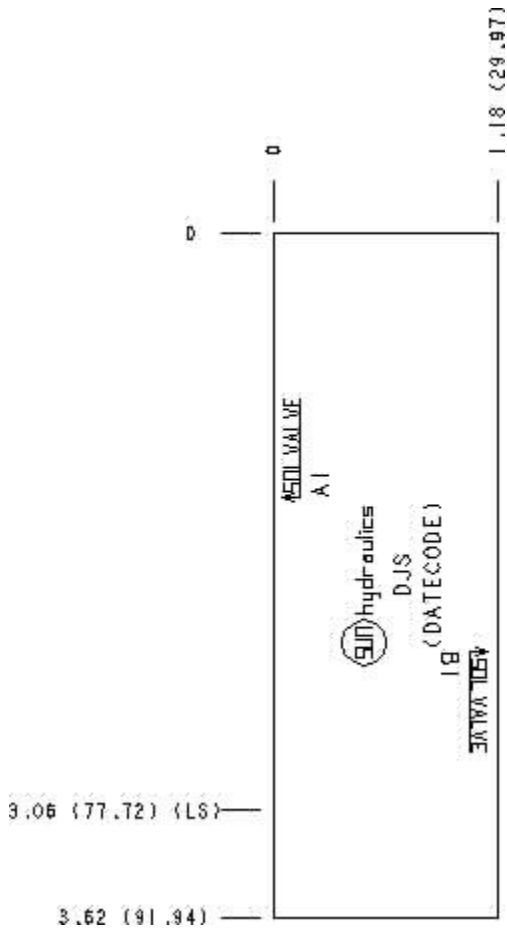
Functional Group:

Model:

Products : Manifolds : Sandwich : Flow Control : ISO 05 X and Y : A to B and B to A

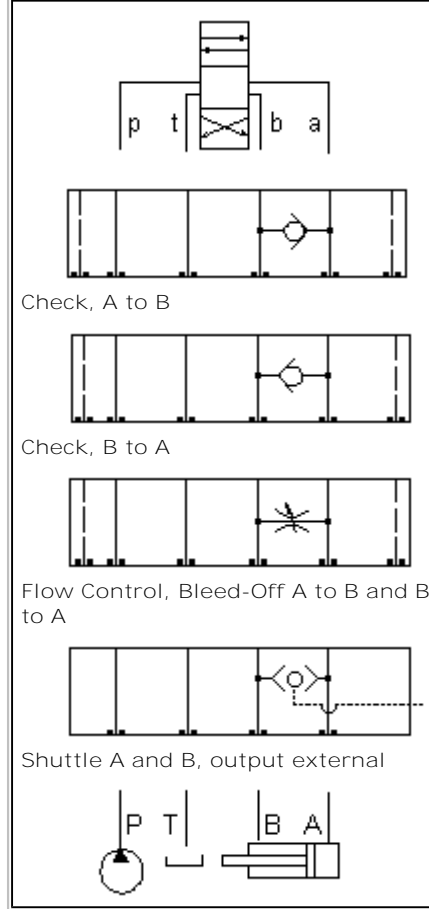
DJS

Face : 6



Cartridge extension measurement is to the centerline of the cartridge.

Function



Aluminum Body Pressure Rating: **3000 psi (210 bar)**

Ductile Iron Body Pressure Rating: **5000 psi (350 bar)**

Technical Data

	U.S. Units	Metric Units
Model Weight	0.82 lb.	0.37 kg.
Cavity	T-13A	
Body Features	A to B or B to A	
Body Type	Sandwich	
Interface	ISO 05 - X&Y	
Open Cavity Quantity	1	
Stack Height	1.19 in.	30 mm

Option Selection:

Model Code	Description
DJS	Aluminum, Buna-N, U.S. Units
DJS/S	Ductile Iron, Buna-N, U.S. Units

Special Notes :

- | For check valve application, use only with CX*A check valves - free flow nose to side.

Related Information :

- | [The retainer and seal kit used with this ISO 05 X and Y sandwich determines which pattern, either European or US, is active. It must be ordered separately. Click here for more information.](#)
- | [Studnuts and Studrods for sandwich bodies - metric units.](#)
- | [How to install multi-functional sandwich bodies - US.](#)
- | [How to install multi-functional sandwich bodies - CETOP](#)
- | [Studnuts and Studrods for sandwich bodies - US units](#)



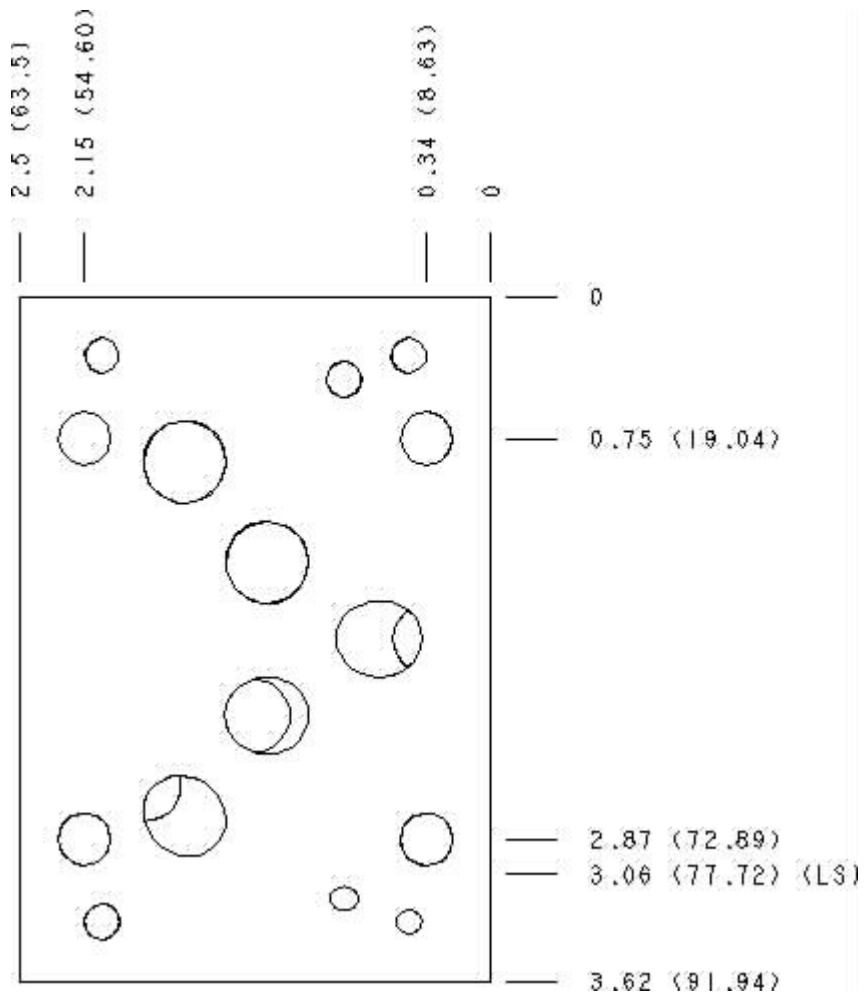
Functional Group:

Products : Manifolds : Sandwich : Flow Control : ISO 05 X and Y : A to B and B to A

Model:

DJS

Face : 5



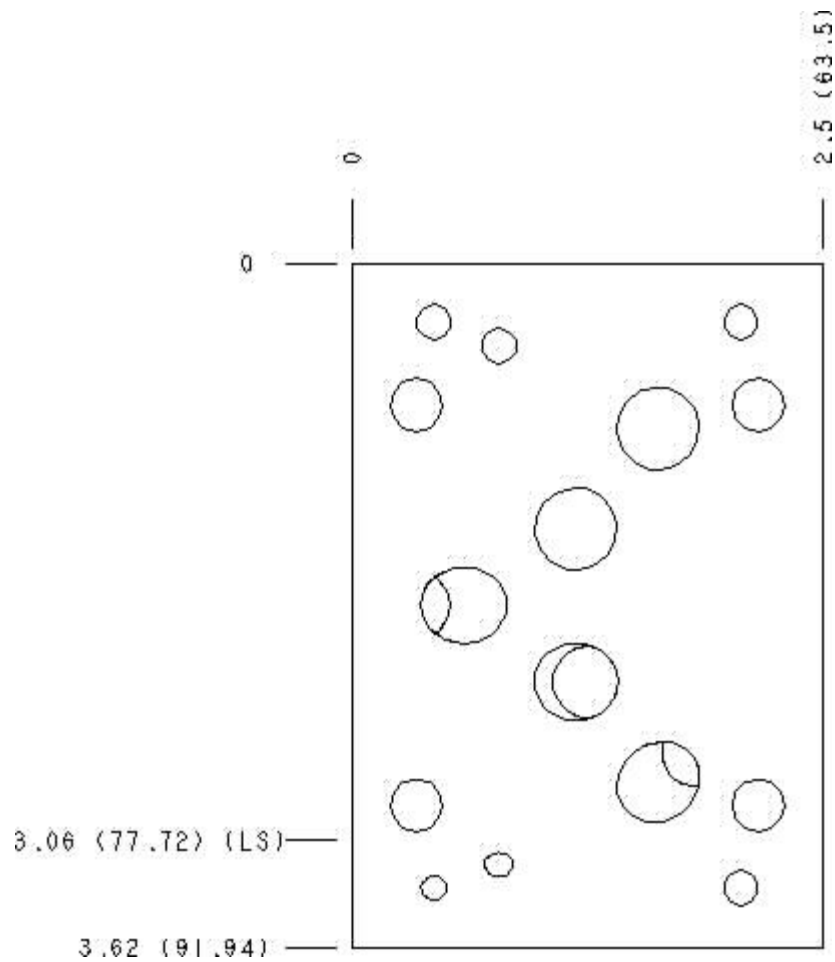
Cartridge extension measurement is to the centerline of the cartridge.



Functional Group:
 Products : Manifolds : Sandwich : Flow Control : ISO 05 X and Y : A to B and B
 to A

Model:
 DJS

Face : 7



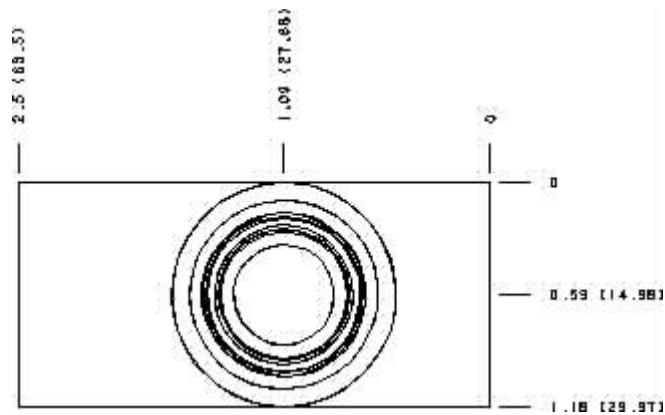
Cartridge extension measurement is to the centerline of the cartridge.



Functional Group:
 Products : Manifolds : Sandwich : Flow Control : ISO 05 X and Y : A to B and B to A

Model:
 DJS

Face : 9



Cartridge extension measurement is to the centerline of the cartridge.

Functional Group:

Products : Manifolds : Sandwich : Flow Control : ISO 05
X and Y : A to B and B to A

Model:
DJS

Projection Type

All Dimensions in Inches(mm)

