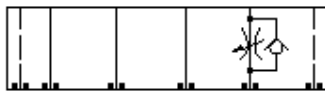
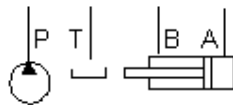


Check, On A, Free Flow Into Valve, High Capacity



Flow Control, Meter Out A, High Capacity



### TECHNICAL DATA

Body Type	Sandwich
Interface	ISO 05 - X&Y
Body Features	Out of A
Stack Height	2.49 in.
Open Cavities	1
Cavity	T-16A
Model Weight	2.36 lb.

### NOTES

- Stack height value in technical data table includes seal retainer plate.
- This installation requires a retainer and seal kit which are purchased separately. See "Related Accessories" section.
- For check valve application, use only with CX\*A check valves - free flow nose to side.
- Important:** Carefully consider the maximum system pressure. The pressure rating of the manifold is dependent on the manifold material, with the port type/size a secondary consideration. Manifolds constructed of aluminum are not rated for pressures higher than 3000 psi (210 bar), regardless of the port type/size specified.

### INCLUDED COMPONENTS

Part	Description	Quantity
A330-006-006	SAE Plug	1

### CONFIGURATION OPTIONS

Model Code Example: DJD

#### MODIFIER

**6061-T651 Aluminum, Buna-N**

/S 65-45-12 Ductile Iron, Buna-N, Blackened

/V 6061-T651 Aluminum, Viton

/Y 65-45-12 Ductile Iron, Viton, Blackened