

4-way, 3-position, pilot-to-shift directional valve

Capacity:
11 - 30 gpm (38 - 120 L/min.)

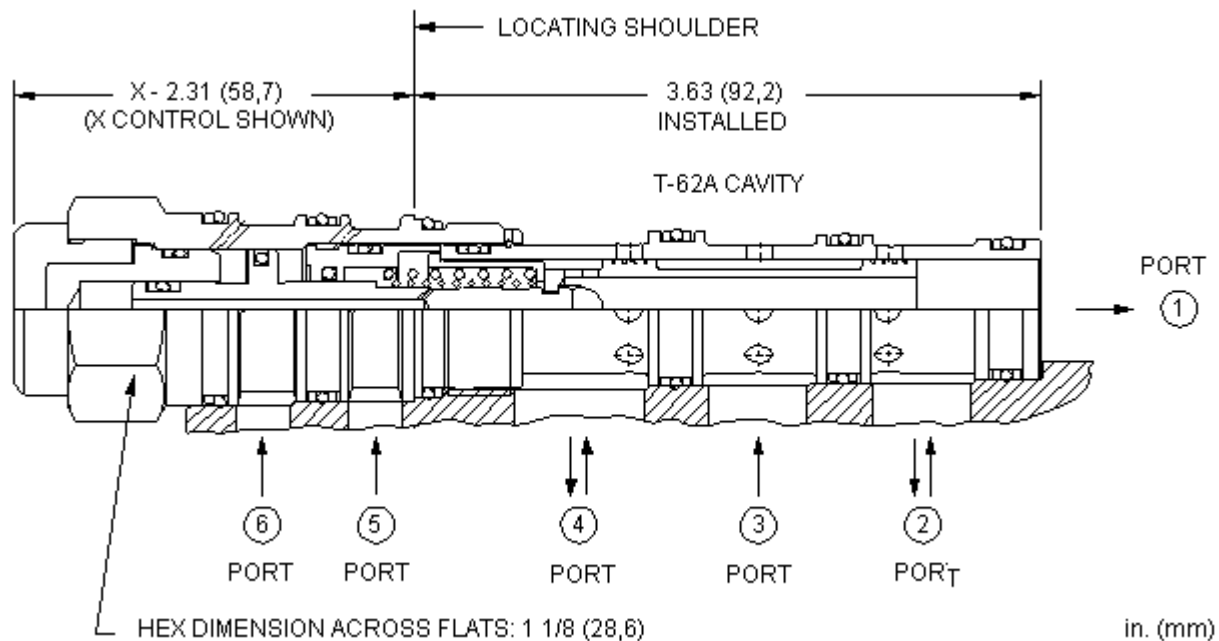
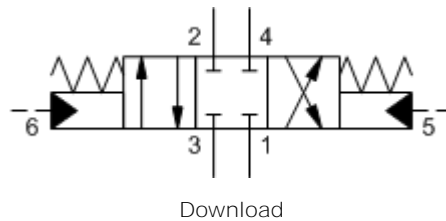
Functional Group:

Products : Cartridges : Directional : 4 Way : 3 Position, 4 Way, Pilot Operated

Model:
DCDC-XCN

Product Description

Three-position, 4-way directional cartridges are spring-centered, 6-port directional valves that can be configured from a choice of 10 different spool options. The supply port is port 3 and all ports will accept 5000 psi (350 bar). Capacity for these pilot-to-shift valves is dependent on the spool type specified.



Technical Features

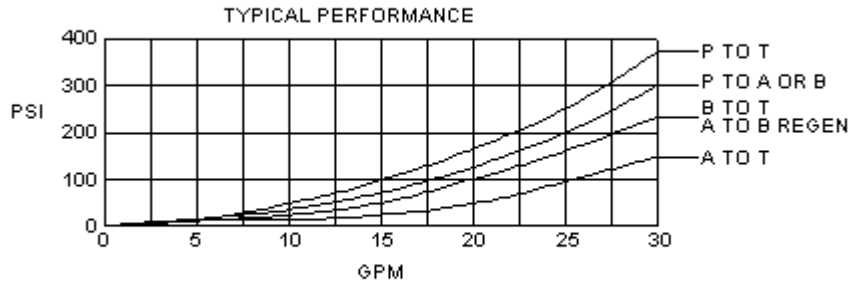
- Hardened spool and sleeve provide consistent and low spool leakage rates and excellent wear characteristics.
- All ports will accept 5000 psi (350 bar), including the x and y pilot ports (port 5 and port 6).
- The reason for the different capacities, or performance limits, for the different spool configurations are flow forces. Flow forces are proportional to flow and pressure drop. Typically, they resist the opening of a passage. Spool configurations that open passages as they spring center are the most susceptible. If the flow forces
- Leakage listed in technical data is for each path.

due to the flow and pressure conditions exceed the centering spring force the valve may not shift completely. Higher flows may be used at lower pressures.

- The pilot ports, 5 and 6, are positively sealed from the work ports.
- Incorporates the Sun floating style construction to minimize the possibility of internal parts binding due to excessive installation torque and/or cavity/cartridge machining variations.

Technical Data

	U.S. Units	Metric Units
Model Weight	0.74 lb.	0.34 kg.
Cavity	T-62A	
Capacity	11 - 30 gpm	38 - 120 L/min.
Maximum Operating Pressure	5000 psi	350 bar
Maximum Valve Leakage at 110 SUS (24 cSt)	2 in ³ /min.@1000 psi	30 cc/min.@70 bar
Minimum Pilot Pressure Required to Shift Valve	150 psi	10,5 bar
Pilot Volume Displacement	.06 in ³	0,98 cc
Series (from Cavity)	Series 2	
Valve Hex Size	1 1/8 in.	28,6 mm
Valve Installation Torque	45 - 50 lbf ft	60 - 70 Nm
Seal Kits	Buna: 990-062-007	
Seal Kits	Viton: 990-062-006	



DCDC-XCN

Control

Spool Configuration

External Material/Seal Material

X Standard Pilot +0.00

C Blocked Center +0.00

N Buna-N +0.00

