

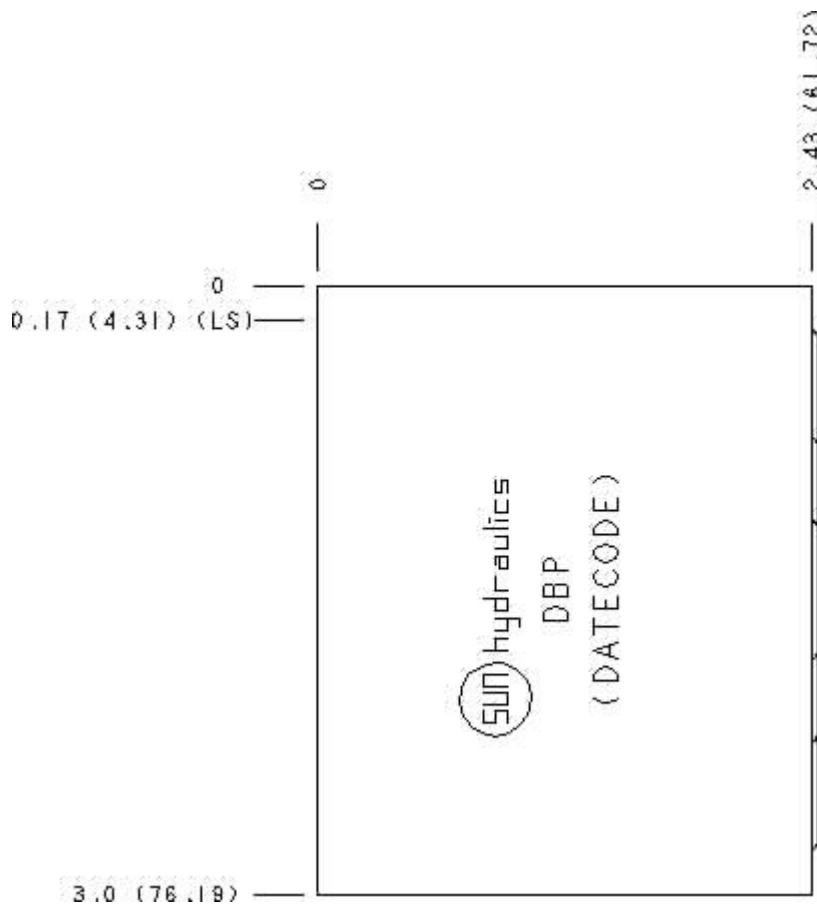
Functional Group:

Products : Manifolds : Sandwich : Flow Control : ISO 05 : Meter in P

Model:

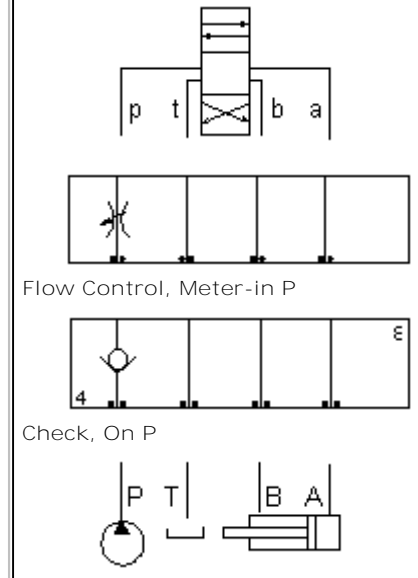
DBP

Face : 6



Cartridge extension measurement is to the centerline of the cartridge.

Function



Aluminum Body Pressure Rating: **3000 psi (210 bar)**

Ductile Iron Body Pressure Rating: **5000 psi (350 bar)**

Technical Data

	U.S. Units	Metric Units
Model Weight	1.46 lb.	0.66 kg.
Cavity	T-5A	
Body Features	Into P	
Body Type	Sandwich	
Interface	ISO 05	
Open Cavity Quantity	1	
Stack Height	2.44 in.	62 mm

Option Selection:

Model Code	Description
DBP	Aluminum, Buna-N, U.S. Units
DBP/S	Ductile Iron, Buna-N, U.S. Units
DBP/V	Aluminum, Viton, U.S. Units
DBP/Y	Ductile Iron, Viton, U.S. Units

Special Notes :

- | For check valve application, use only with CX*A check valves - free flow nose to side.

Related Information :

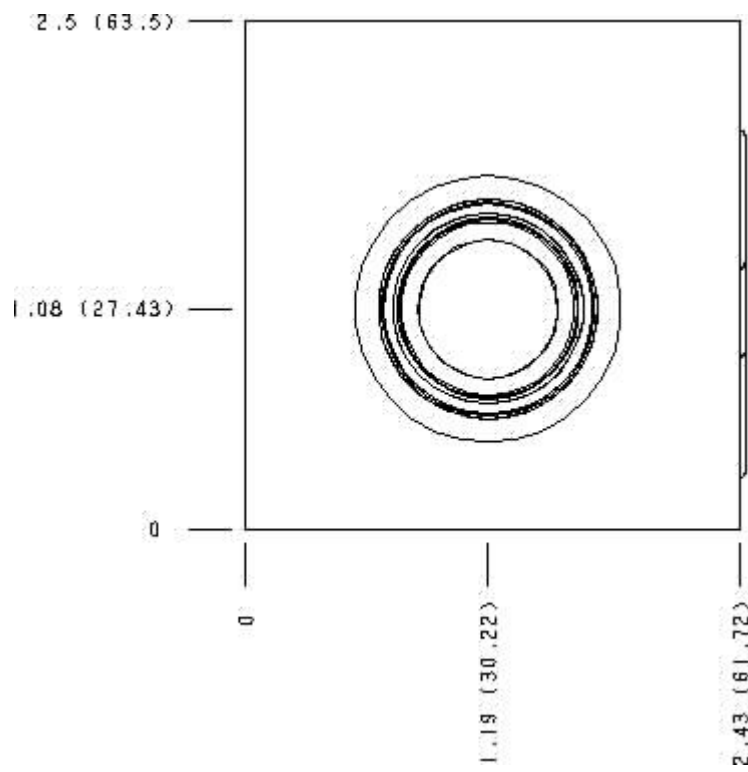
- | [Studnuts and Studrods for sandwich bodies - metric units.](#)
- | [Studnuts and Studrods for sandwich bodies - US units](#)



Functional Group:
Products : Manifolds : Sandwich : Flow Control : ISO 05 : Meter in P

Model:
DBP

Face : 2



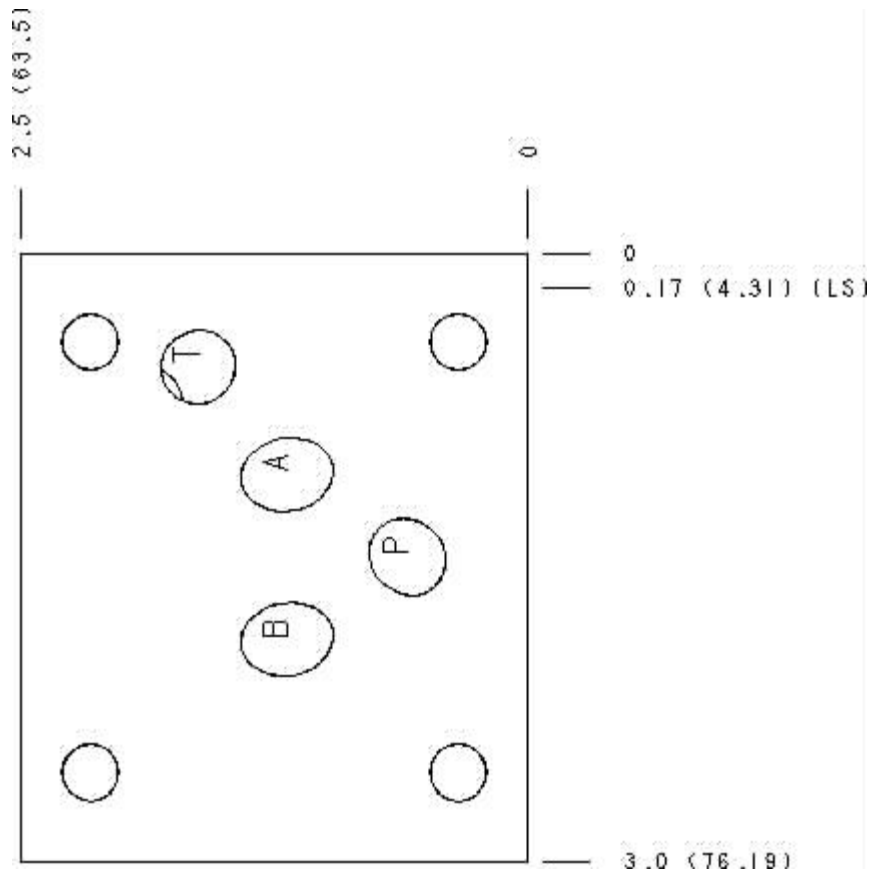
Cartridge extension measurement is to the centerline of the cartridge.



Functional Group:
 Products : Manifolds : Sandwich : Flow Control : ISO 05 : Meter in P

Model:
 DBP

Face : 5



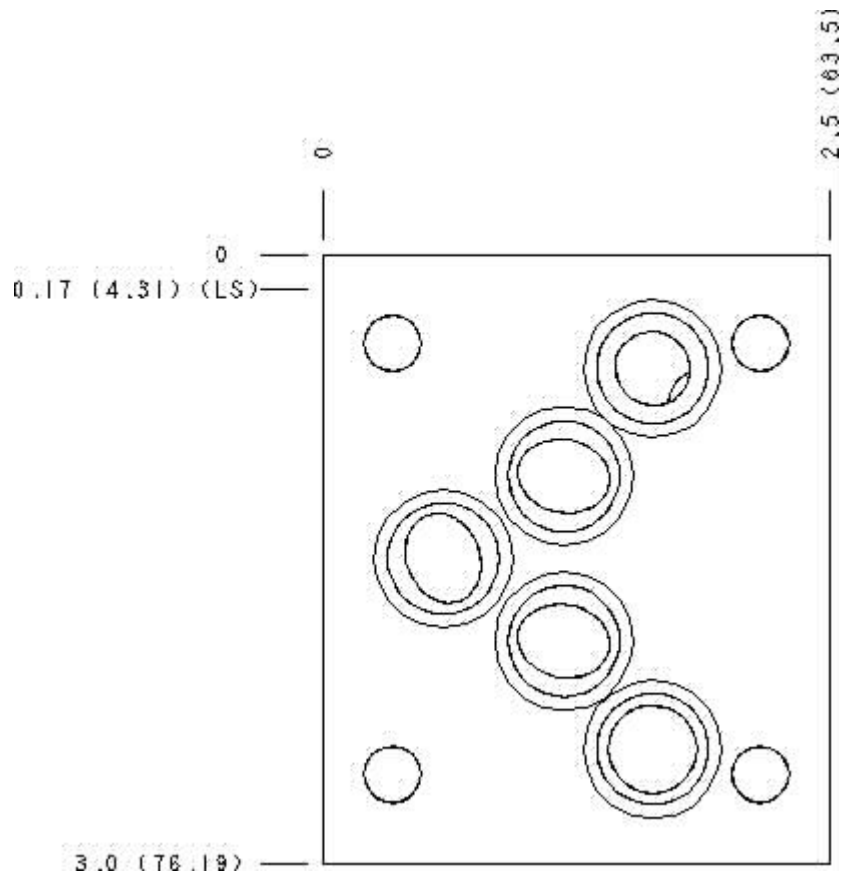
Cartridge extension measurement is to the centerline of the cartridge.



Functional Group:
 Products : Manifolds : Sandwich : Flow Control : ISO 05 : Meter in P

Model:
 DBP

Face : 7




Cartridge extension measurement is to the centerline of the cartridge.



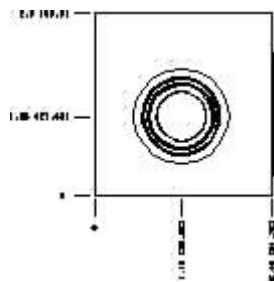
Functional Group:

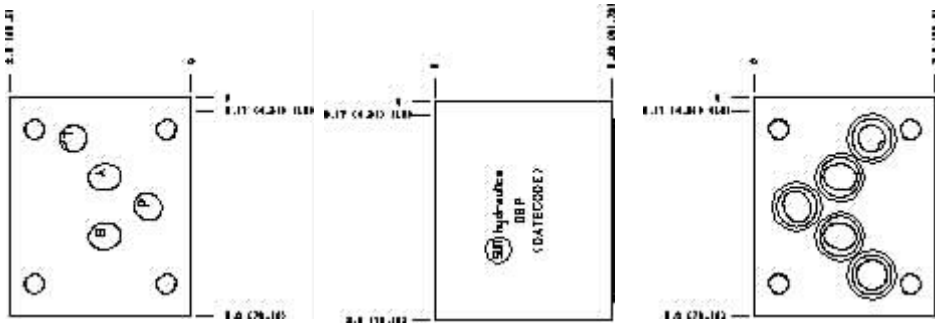
Products : Manifolds : Sandwich : Flow Control : ISO
05 : Meter in P

Model:
DBP

Projection Type 

All Dimensions in Inches(mm)





Copyright © 2007-2008 Sun Hydraulics Corporation.
All rights reserved.

[Terms and Conditions](#) - [Statement of Privacy](#)