

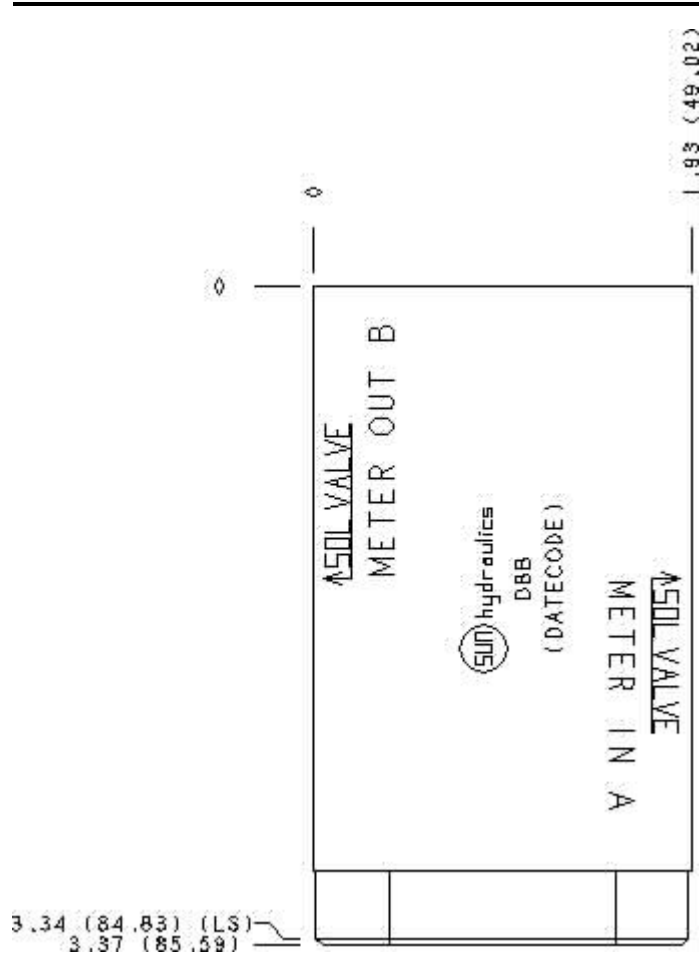
Functional Group:

Products : Manifolds : Sandwich : Flow Control : ISO 05 : Meter in on A

Model:

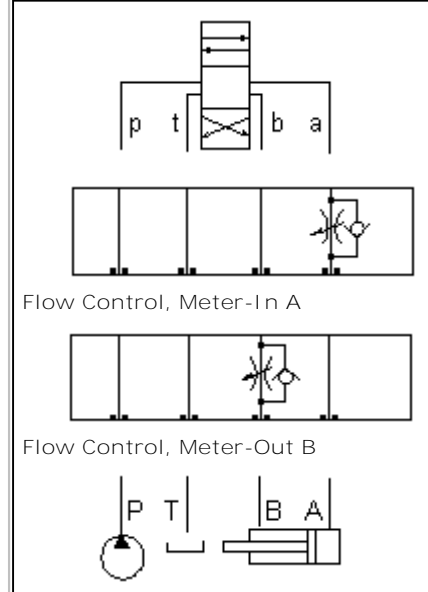
DBB

Face : 7



Cartridge extension measurement is to the centerline of the cartridge.

Function



Aluminum Body Pressure Rating: **3000 psi (210 bar)**

Ductile Iron Body Pressure Rating: **5000 psi (350 bar)**

### Technical Data

	U.S. Units	Metric Units
<b>Model Weight</b>	1.38 lb.	0.63 kg.
<b>Cavity</b>	T-5A	
<b>Body Features</b>	Flow into workport A or out of B	
<b>Body Type</b>	Sandwich	
<b>Interface</b>	ISO 05	
<b>Open Cavity Quantity</b>	1	
<b>Stack Height</b>	1.99 in.	50,5 mm

---

Option Selection:

Model Code	Description
DBB	Aluminum, Buna-N, U.S. Units
DBB/S	Ductile Iron, Buna-N, U.S. Units
DBB/V	Aluminum, Viton, U.S. Units
DBB/Y	Ductile Iron, Viton, U.S. Units

---

Special Notes :

No Special Notes available for selected Model.

---

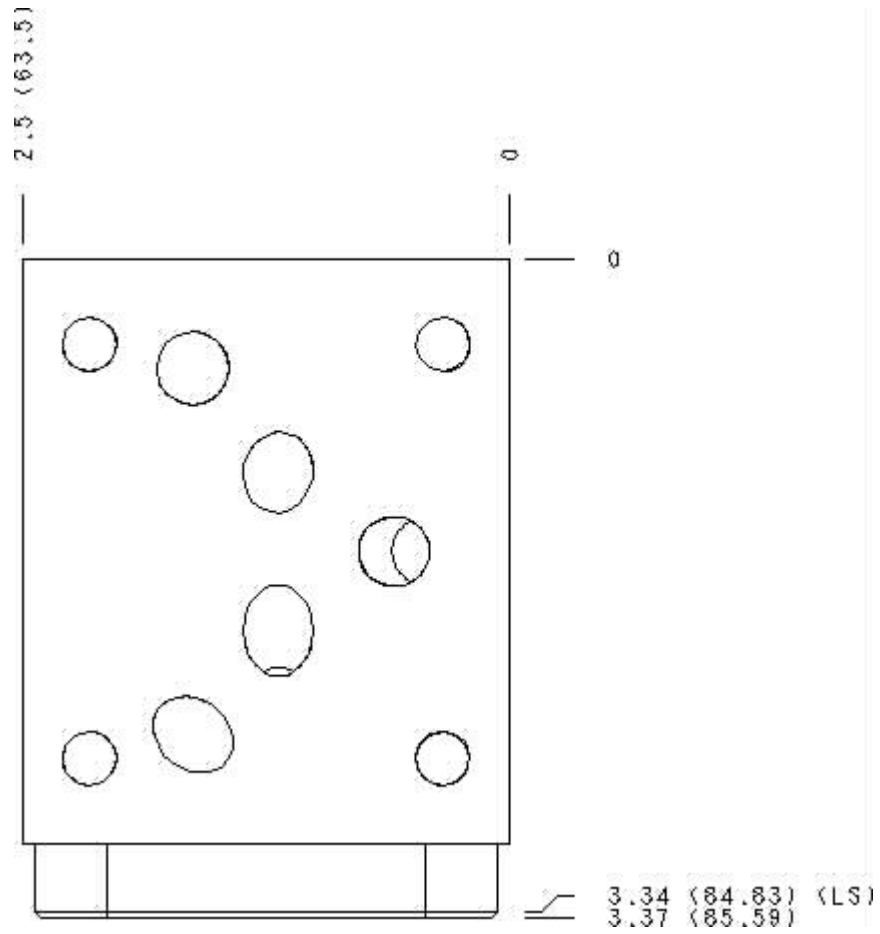


Functional Group:  
Products : Manifolds : Sandwich : Flow Control : ISO 05 : Meter in on A

Model:  
DBB

Face : 6

---



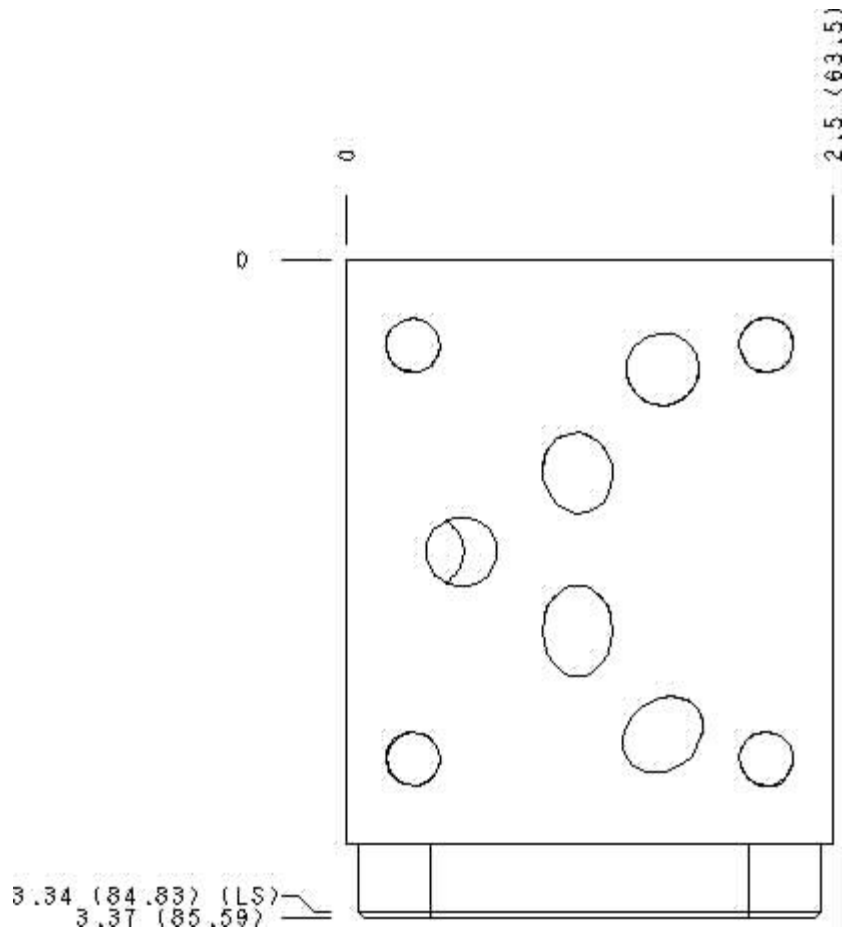
Cartridge extension measurement is to the centerline of the cartridge.



Functional Group:  
 Products : Manifolds : Sandwich : Flow Control : ISO 05 : Meter in on A

Model:  
 DBB

Face : 8



Cartridge extension measurement is to the centerline of the cartridge.



Functional Group:  
 Products : Manifolds : Sandwich : Flow Control : ISO 05 : Meter in on A

Model:  
 DBB

Face : 10



All rights reserved.

[Terms and Conditions](#) - [Statement of Privacy](#)