

2-way, solenoid-operated directional spool valve - pilot capacity

Functional Group:

Products : Cartridges : Directional : 2 Way : Spool, Solenoid Operated

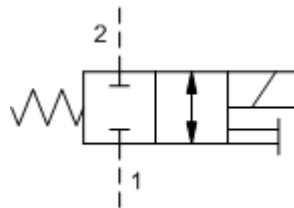
Capacity:
.25 gpm (1
L/min.)

Model:
DAAA-MCN

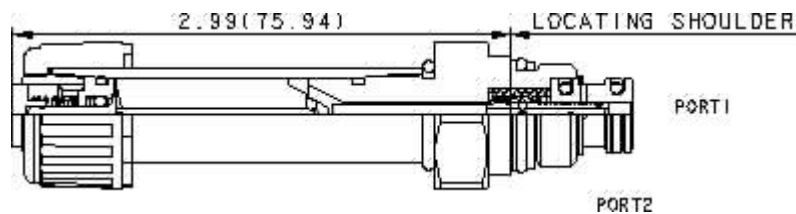
Product Description

This solenoid-operated, 2-position, 2-way cartridge is a direct-acting, balanced spool pilot valve used to pilot other full-flow valves. The valve is available in either a normally open or normally closed configuration.

This cartridge can be installed directly into a cavity in the end of many of Sun's pilot operated and ventable valves to provide integrated pilot control.



Download



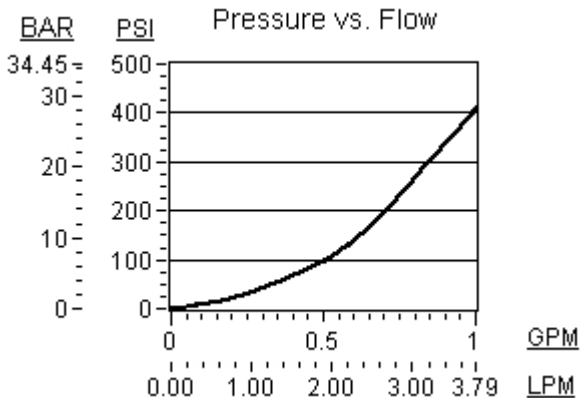
Technical Features

- This valve is direct actuated and requires no minimum hydraulic pressure for operation.
- Cartridge can be installed directly into a cavity in some Sun pilot operated and ventable cartridges to provide electrically operated pilot control functions. Separate pilot lines are eliminated and only one cavity needs to be machined to accommodate both the control and primary function.
- Valves exhibit extremely low leakage rates; less than 10 drops/min. @ 5000 psi (350 bar).
- A wide variety of coil termination and voltage options are available.
- Incorporates the Sun floating style construction to minimize the possibility of internal parts binding
- A manual push-type override is a standard feature.
- Highly efficient tube design requires only 12 Watts to shift the valve.
- This valve utilizes a wet armature design. This means that the working fluid surrounds the armature and is exposed to the heat generated by the coil. This can be a factor if the coil is energized for long periods of time. Some fluids, notably water/glycol mixtures, break down at these temperatures over time and form varnishes that will affect the function of the cartridge.
- Coils are interchangeable with other Sun Series P pilot solenoid products and can be mounted on the tube in either direction.

due to excessive installation torque and/or cavity/cartridge machining variations.

Technical Data

	U.S. Units	Metric Units
Model Weight	0.32 lb.	0.15 kg.
Cavity	T-8A	
Capacity	.25 gpm	1 L/min.
Manual Override Force Requirement	10 lbs/1000 psi @ Port 1	6,6 kgs/100 bar @ Port 1
Maximum Operating Pressure	5000 psi	350 bar
Maximum Valve Leakage at 110 SUS (24 cSt)	10 drops/min.@5000 psi	10 drops/min.@350 bar
Response Time - Typical	30 ms	
Series (from Cavity)	Series P	
Switching Frequency	15000 cycles/hr	
Solenoid Tube Diameter	.56 in.	14,2 mm
Valve Hex Size	7/8 in.	22,2 mm
Valve Installation Torque	25 - 30 lbf ft	35 - 40 Nm
Seal Kits	Buna: 990-008-007	
Seal Kits	Viton: 990-008-006	



DAAA-MCN

Control

Spool Configuration

External Material/Seal Material

M Manual Override +0.00

C Normally Closed +0.00

N Buna-N +0.00

Stainless material/seal options not available for this model