

Hot oil check valve

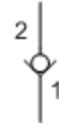
Capacity:
10 gpm (40 L/min.)

Functional Group:
Products : Cartridges : Check : 2 Port : Free Flow Nose to Side

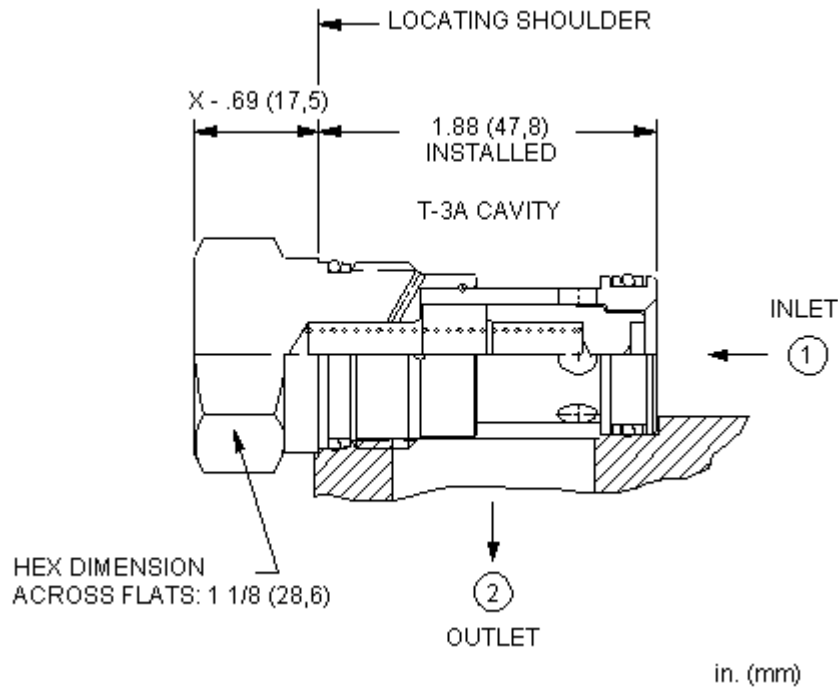
Model:
CXFD-XCV

Product Description

This valve was designed to be used in a parts-in-body, hot oil shuttle assembly. 2 valves, nose to nose, with a pin in between created the low side shuttle.



[Download](#)



Technical Features

Technical Data

	U.S. Units	Metric Units
Model Weight	0.44 lb.	0.20 kg.
Cavity	T-3A	
Capacity	10 gpm	40 L/min.
Series (from Cavity)	Series 2	
Valve Hex Size	1 1/8 in.	28,6 mm
Valve Installation Torque	45 - 50 lbf ft	60 - 70 Nm
Seal Kits	Buna: 990-203-007	
Seal Kits	Viton: 990-203-006	

CXFD-XCV

Control

Cracking Pressure

External Material/Seal
Material

X Not Adjustable +0.00

C 30 psi (2 bar) +0.00

V Viton +3.50

Copyright © 2007-2008 Sun Hydraulics Corporation. All rights reserved.
Terms and Conditions - ISO Certification - Statement of Privacy