

## 4.5:1 pilot ratio, vented counterbalance valve

Capacity:  
7.5 gpm (30 L/min.)

Functional Group:

Products : Cartridges : Counterbalance : 4-Port Vented : 4.5:1 Pilot Ratio

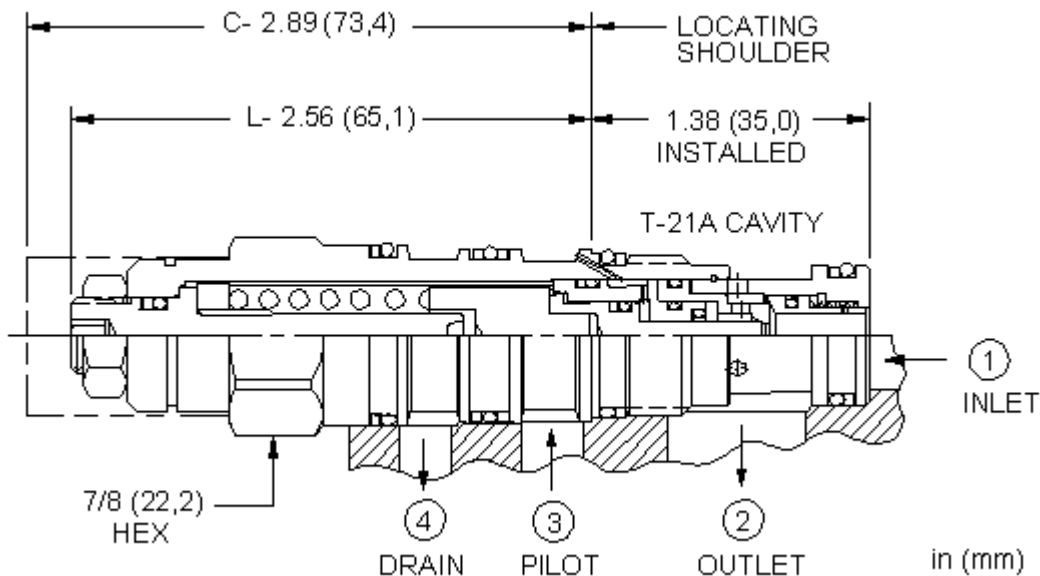
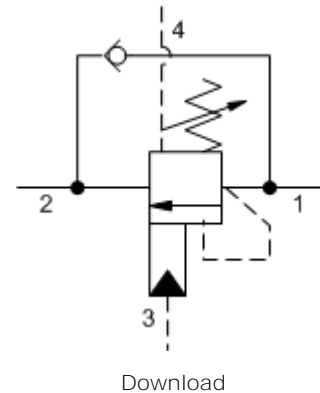
Model:

CWBG-LHN

### Product Description

Vented counterbalance valves with pilot assist are meant to control an overrunning load. The check valve allows free flow from the directional valve (port 2) to the load (port 1) while a direct-acting, pilot-assisted relief valve controls flow from port 1 to port 2. Pilot assist at port 3 lowers the effective setting of the relief valve at a rate determined by the pilot ratio. Backpressure at port 2 does not affect the valve setting because the spring chamber references the vent (port 4).

Other names for this valve include motion control valve and over center valve.



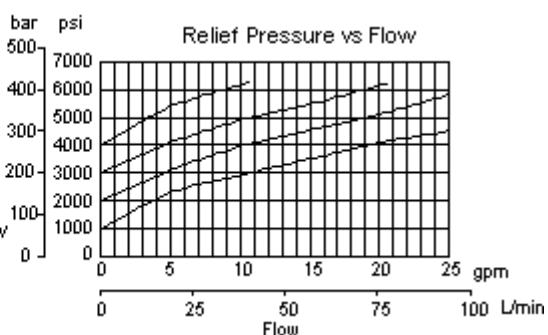
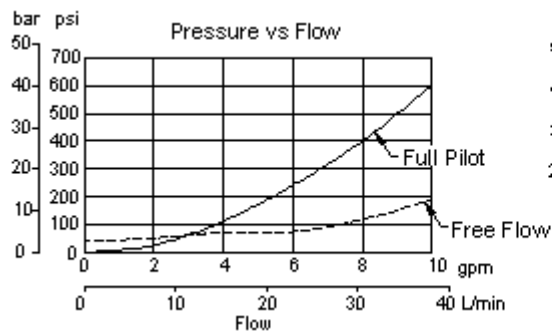
### Technical Features

- Counterbalance valves should be set at least 1.3 times the maximum load induced pressure.
- Full clockwise setting is 0 psi (0 bar).
- All 4-port counterbalance and pilot-to-open check cartridges are physically interchangeable (i.e. same flow path, same cavity for a given frame size), however, the model CWBG has a reduced overall length, allowing for easier packaging.
- Turn adjustment clockwise to decrease setting and release load.
- Free-flow check capacity (port 2 to port 1) is equivalent to the CAC\* and CWC\* models but the piloted-open flow capacity (port 1 to port 2) is reduced. See performance curve.
- Reseat exceeds 85% of set pressure when the valve is standard set. Settings lower than the standard set pressure may result in lower reseal percentages.

- Sun counterbalance cartridges can be installed directly into a cavity machined in an actuator housing for added protection and improved stiffness in the circuit.
- With vented valves, a lower pilot ratio may be required to achieve machine stability compared to non-vented valves.
- This valve has positive seals between all ports.
- Incorporates the Sun floating style construction to minimize the possibility of internal parts binding due to excessive installation torque and/or cavity/cartridge machining variations.

Technical Data

	U.S. Units	Metric Units
Model Weight	0.43 lb.	0.20 kg.
Cavity	T-21A	
Capacity	7.5 gpm	30 L/min.
Pilot Ratio	4.5: 1	
Maximum Recommended Load Pressure at Maximum Setting	3075 psi	215 bar
Maximum Setting	4000 psi	280 bar
Factory Pressure Settings Established at	2 in <sup>3</sup> /min.	30 cc/min.
Maximum Valve Leakage at Reseat	5 drops/min.	0,4 cc/min.
Reverse Flow Check Cracking Pressure	40 psi	2,8 bar
Series (from Cavity)	Series 1	
Reseat	>85% of Set Pressure	
Valve Hex Size	7/8 in.	22,2 mm
Valve Installation Torque	30 - 35 lbf ft	45 - 50 Nm
Adjustment Screw Hex Socket Size	5/32 in.	4 mm
Adjustment Nut Hex Size	9/16 in.	15 mm
Adjustment Nut Torque	108 lbf in.	12 Nm
Seal Kits	Buna: 990-021-007	
Seal Kits	Viton: 990-021-006	



CWBG-LHN

Control

Functional Setting Range

External Material/Seal Material

L Standard Screw

+0.00

1000 - 4000 psi w/25  
H psi Check (70 - 280 bar +0.00  
w/1,7 bar Check), 3000 N Buna-N +0.00

Adjustment

psi (210 bar) Standard  
Setting

Customer specified setting stamped on hex \$1.10

Copyright © 2007-2008 Sun Hydraulics Corporation. All rights reserved.  
Terms and Conditions - ISO Certification - Statement of Privacy