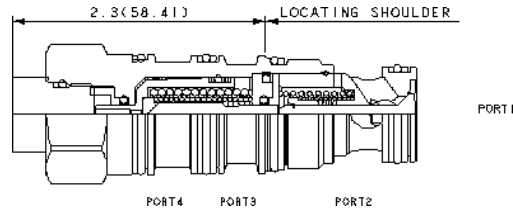
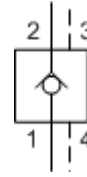


Model: CVEV-XCN

Capacity: 30 gpm (120 L/min.)

Vented pilot-to-open check valve

This valve is a pilot to open check valve. It has a sealed pilot, a steel seat, and is vented. It allows free flow from the valve (port 2) to the load (port 1) and blocks flow in the opposite direction. Pressure at the pilot (port 3) will open the valve from port 1 to port 2. Pilot pressure needed to open the valve is directly proportional to the load pressure at port 1. The valve is insensitive to pressure at port 2 because the spring chamber is referenced to the vent (port 4).



Technical Data

	U.S. Units	Metric Units
Cavity		T-22A
Capacity	30 gpm	120 L/min.
Pilot Ratio		3:1
Maximum Operating Pressure	5000 psi	350 bar
Maximum Valve Leakage at 110 SUS (24 cSt)	1 drops/min.	0,07 cc/min.
Series (from Cavity)		Series 2
Valve Hex Size	1 1/8 in.	28,6 mm
Valve Installation Torque	45 - 50 lbf ft	60 - 70 Nm
Model Weight	.50 lb	0,25 kg
Seal Kits - Cartridge		Buna: 990-022-007
Seal Kits - Cartridge		Viton: 990-022-006

Control

Cracking Pressure

Seal Material

X Standard Pilot

C 30 psi (2 bar)

N Buna-N