

## Pilot-to-close check valve

Capacity:  
160 gpm (640 L/min.)

Functional Group:

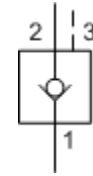
Products : Cartridges : Circuit Saver : 3 Port : Pilot-to-Close Check Valve

Model:

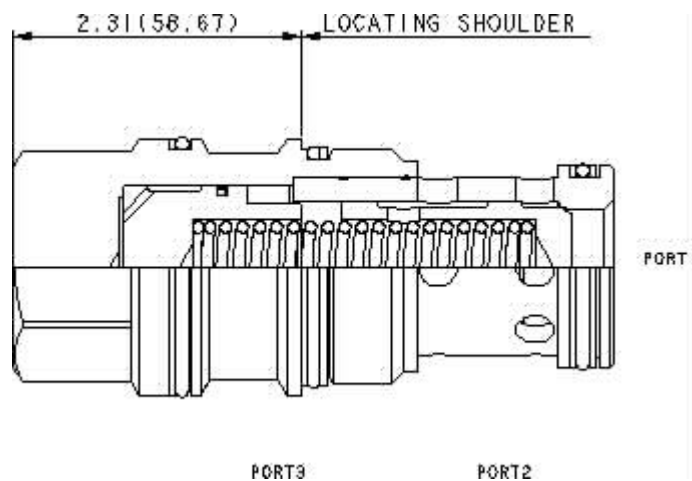
COJA-XCN

### Product Description

This valve is a spring biased closed, pilot-to-close check cartridge that has a 1.8:1 pilot ratio. The valve allows flow from port 1 to port 2 and blocks reverse flow. Pressure at the pilot port opposes pressure at port 1 at a ratio of 1.8:1. This valve is most often used in regeneration circuits.



[Download](#)



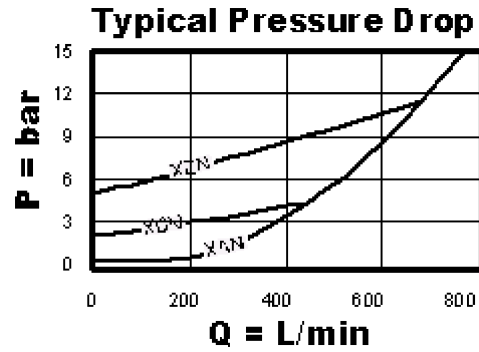
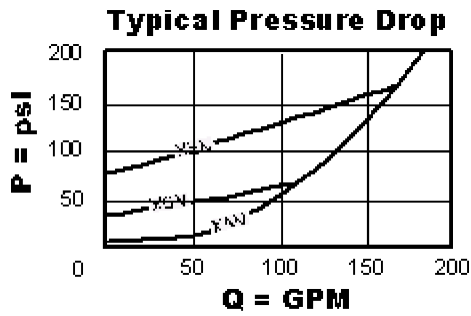
### Technical Features

- Nominal pilot ratio is 1.8:1. This means that a pressure of 1000 psi (70 bar) at the pilot port will close a valve against a pressure of 1800 psi (125 bar) at port 1. Any decay or loss of pilot pressure could allow the valve to open, even if it is a momentary decay or loss.
- Reverse flow through the valve from port 2 to port 1 is not possible under any condition.
- In the beginning the CO\*A's did not have a positive seal on the pilot pistons and the CO\*B's did. Now the CO\*A's are positively sealed and the 2 valves are mechanically identical. CO\*A's are more readily available and cost less.
- Incorporates the Sun floating style construction to minimize the possibility of internal parts binding due to excessive installation torque and/or cavity/cartridge machining variations.
- Pressure at the port 2 area directly opposes pilot pressure.
- With equal pressures at all ports the valve is closed.
- Stainless steel cartridge options P or W are intended for use within corrosive environments with all external components manufactured in stainless steel or titanium. Internal working components remain the same as the standard valves.

### Technical Data

|              | U.S. Units | Metric Units |
|--------------|------------|--------------|
| Model Weight | 2.60 lb.   | 1.18 kg.     |

|   |                    |              |
|---|--------------------|--------------|
| Cavity                                    | T-19A              |              |
| Capacity                                  | 160 gpm            | 640 L/min.   |
| Pilot Ratio                               | 1.8: 1             |              |
| Maximum Operating Pressure                | 5000 psi           | 350 bar      |
| Maximum Valve Leakage at 110 SUS (24 cSt) | 1 drops/min.       | 0,07 cc/min. |
| Series (from Cavity)                      | Series 4           |              |
| Valve Hex Size                            | 1 5/8 in.          | 41,3 mm      |
| Valve Installation Torque                 | 350 - 375 lbf ft   | 465 - 500 Nm |
| Seal Kits                                 | Buna: 990-019-007  |              |
| Seal Kits                                 | Viton: 990-019-006 |              |



## COJA-XCN

Control

Cracking Pressure

External Material/Seal Material

X Standard Pilot +0.00

C 30 psi (2 bar) +0.00

N Buna-N +0.00

If the material/seal is P, the control must be X  
 If the material/seal is W, the control must be X