

## Pilot-to-close check valve

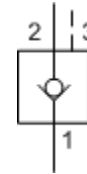
Capacity:  
20 gpm (80 L/min.)

Functional Group:  
Products : Cartridges : Circuit Saver : 3 Port : Pilot-to-Close Check Valve

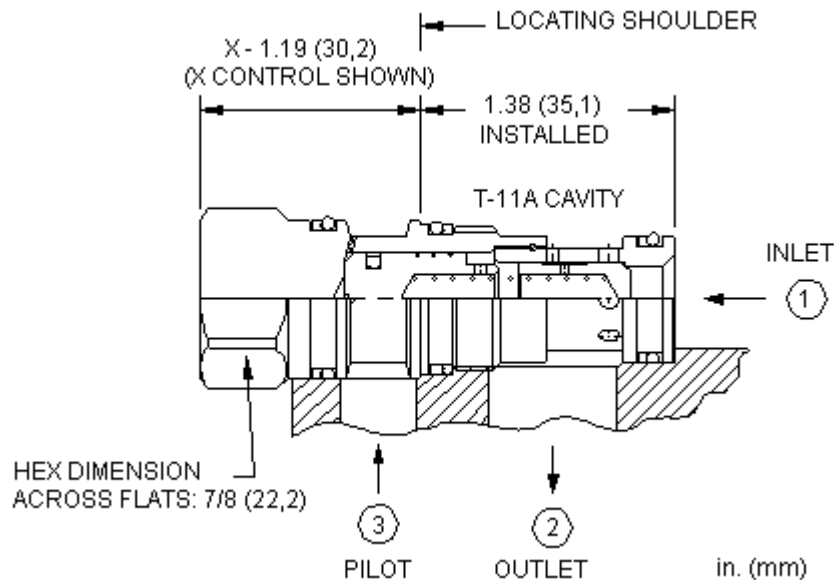
Model:  
CODA-XCN

### Product Description

This valve is a spring biased closed, pilot-to-close check cartridge that has a 1.8:1 pilot ratio. The valve allows flow from port 1 to port 2 and blocks reverse flow. Pressure at the pilot port opposes pressure at port 1 at a ratio of 1.8:1. This valve is most often used in regeneration circuits.



[Download](#)



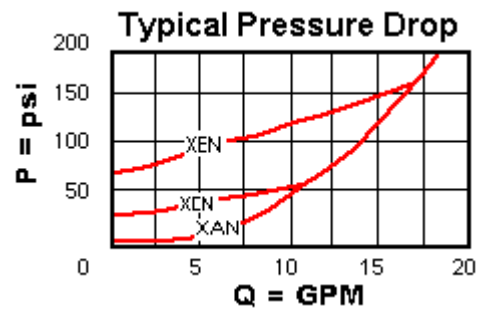
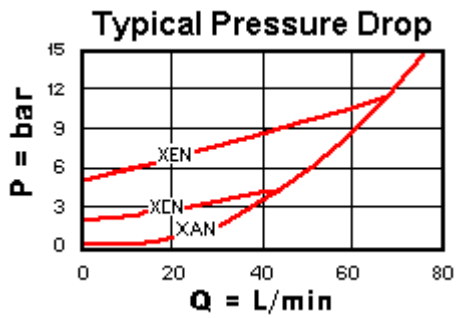
### Technical Features

- Nominal pilot ratio is 1.8:1. This means that a pressure of 1000 psi (70 bar) at the pilot port will close a valve against a pressure of 1800 psi (125 bar) at port 1. Any decay or loss of pilot pressure could allow the valve to open, even if it is a momentary decay or loss.
- Pressure at the port 2 area directly opposes pilot pressure.
- Reverse flow through the valve from port 2 to port 1 is not possible under any condition.
- In the beginning the CO\*A's did not have a positive seal on the pilot pistons and the CO\*B's did. Now the CO\*A's are positively sealed and the 2 valves are mechanically identical. CO\*A's are more readily available and cost less.
- Minimum clearances between the spool and sleeve and a seal on the pilot piston diameter significantly reduce the potential for silting.
- Stainless steel cartridge options P or W are intended for use within corrosive environments with all external components manufactured in stainless steel or titanium. Internal working components remain the same as the standard

- With equal pressures at all ports the valve is closed.
- Incorporates the Sun floating style construction to minimize the possibility of internal parts binding due to excessive installation torque and/or cavity/cartridge machining variations.

Technical Data

	U.S. Units	Metric Units
Cavity		T-11A
Capacity	20 gpm	80 L/min.
Pilot Ratio		1.8: 1
Maximum Operating Pressure	5000 psi	350 bar
Maximum Valve Leakage at 110 SUS (24 cSt)	1 drops/min.	0,07 cc/min.
Series (from Cavity)		Series 1
Valve Hex Size	7/8 in.	22,2 mm
Valve Installation Torque	30 - 35 lbf ft	45 - 50 Nm
Seal Kits - Cartridge		Buna: 990-011-007
Seal Kits - Cartridge		Viton: 990-011-006
Model Weight	0.28 lb.	0.13 kg.



CODA-XCN

Control

Cracking Pressure

External Material/Seal Material

X Standard Pilot

C 30 psi (2 bar) +0.00

N Buna-N +0.00

L Manual Override

+6.00 Z 1 psi (0,07 bar)

+1.00

If the material/seal is P, the control must be X  
 If the material/seal is W, the control must be X

Special Notes

- No Special Notes Available for selected model.



Copyright © 2008-2009 Sun Hydraulics Corporation. All rights reserved.  
Terms and Conditions - ISO Certification - Statement of Privacy