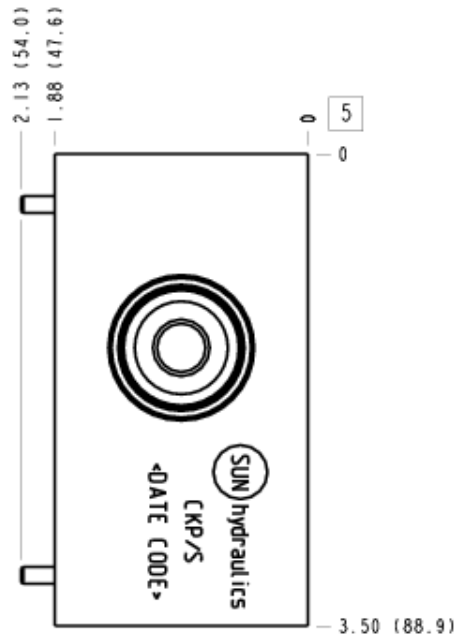
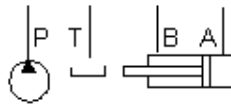


Relief, P to T



CONFIGURATION

/S Modifier 65-45-12 Ductile Iron, Buna-N, Chem. Black

TECHNICAL DATA

Body Type	Sandwich
Interface	ISO 07
Body Features	P to T
Stack Height	1.97 in.
Seal Plate Included (see notes)	Yes
Open Cavities	1
Cavity	T-3A
Port Size	1/4" NPTF
Model Weight	6.58 lb.

NOTES

- Stack height value in technical data table includes seal retainer plate.
- **Important:** Carefully consider the maximum system pressure. The pressure rating of the manifold is dependent on the manifold material, with the port type/size a secondary consideration. Manifolds constructed of aluminum are not rated for pressures higher than 3000 psi (210 bar), regardless of the port type/size specified.

PORT DESIGNATORS

Modifiers	Ports
CKP, /10, /11, /15, /16, /V	Gage Port (Plugged): 1/4" NPTF;
CKP/1A, /1B, /1F, /1G, /M, /Z	Gage Port (Plugged): 1/4" BSPF;

INCLUDED COMPONENTS

Part	Description	Quantity
340-003	Pipe Plug	1
500-001-111	O-Ring	2
500-001-118	O-Ring	4
700-006	Seal Plate	1
811-001-006	Pin	2

CONFIGURATION OPTIONS

Model Code Example: CKP/S

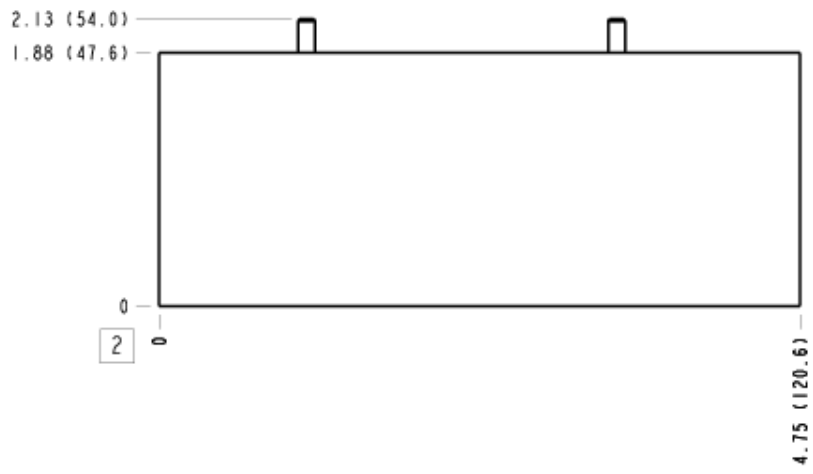
MODIFIER	(/S)
/S	65-45-12 Ductile Iron, Buna-N, Chem. Black
	6061-T651 Aluminum, Buna-N
/11	6061-T651 Aluminum, Buna-N, Clear Anodize - Per MIL SPEC 8625F Type II, Class I
/10	6061-T651 Aluminum, Buna-N, Black Anodize - Per MIL SPEC 8625F Type II, Class II
/V	6061-T651 Aluminum, Viton
/16	6061-T651 Aluminum, Viton, Clear Anodize - Per MIL SPEC 8625F Type II, Class I
/15	6061-T651 Aluminum, Viton, Black Anodize - Per MIL SPEC 8625F Type II, Class II
/M	6061-T651 Aluminum, Metric, Buna-N
/1B	6061-T651 Aluminum, Metric, Buna-N, Clear Anodize - Per MIL SPEC 8625F Type II, Class I
/1A	6061-T651 Aluminum, Metric, Buna-N, Black Anodize - Per MIL SPEC 8625F Type II, Class II
/Z	6061-T651 Aluminum, Metric, Viton
/1G	6061-T651 Aluminum, Metric, Viton, Clear Anodize - Per MIL SPEC 8625F Type II, Class I
/1F	6061-T651 Aluminum, Metric, Viton, Black Anodize - Per MIL SPEC 8625F Type II, Class II
/S3	65-45-12 Ductile Iron, Buna-N, Trivalent Clear Zinc with Top Sealer
/Y	65-45-12 Ductile Iron, Viton, Chem. Black
/Y3	65-45-12 Ductile Iron, Viton, Trivalent Clear Zinc with Top Sealer
/T	65-45-12 Ductile Iron, Metric, Buna-N, Chem. Black
/T3	65-45-12 Ductile Iron, Metric, Buna-N, Trivalent Clear Zinc with Top Sealer
/W	65-45-12 Ductile Iron, Metric, Viton, Chem. Black
/W3	65-45-12 Ductile Iron, Metric, Viton, Trivalent Clear Zinc with Top Sealer

MANIFOLD FACES

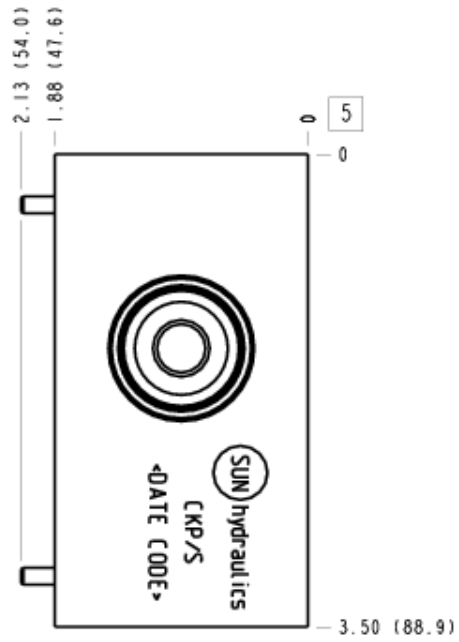
FACE GRID

1	2	3	4
5	6	7	8
9	10	11	12

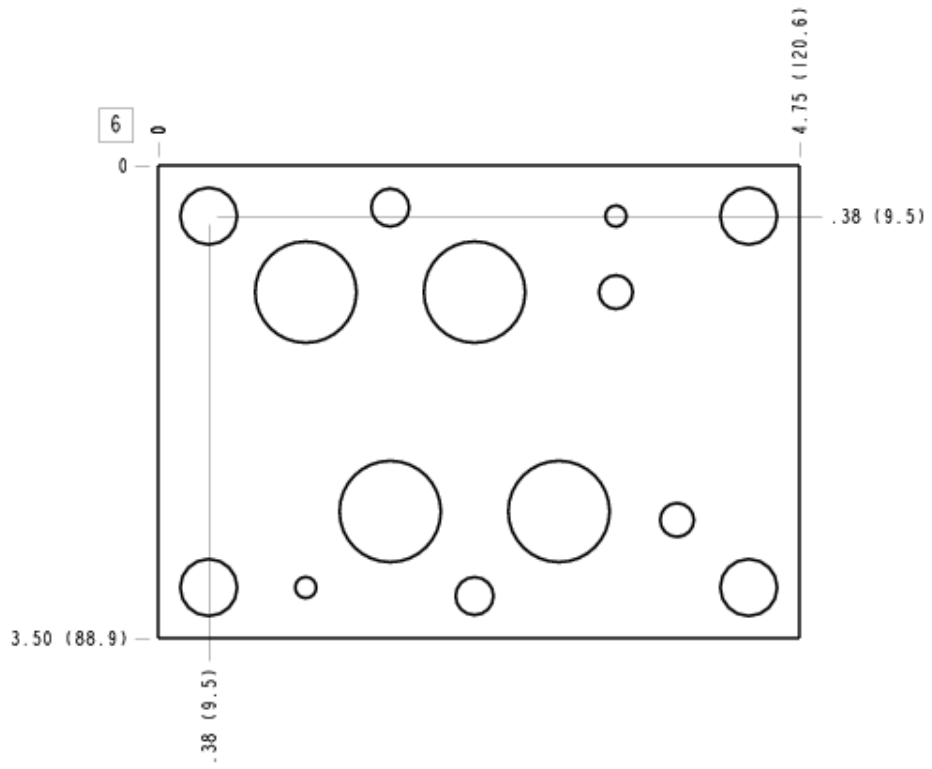
Face 2



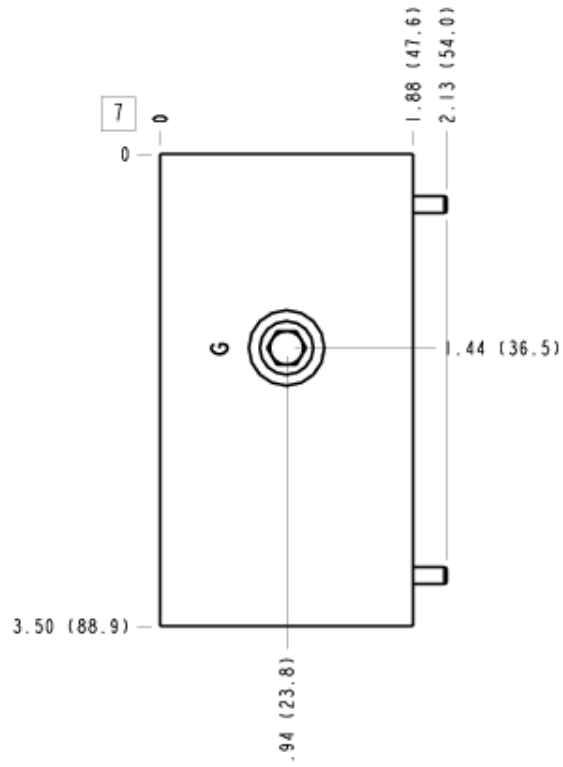
Face 5



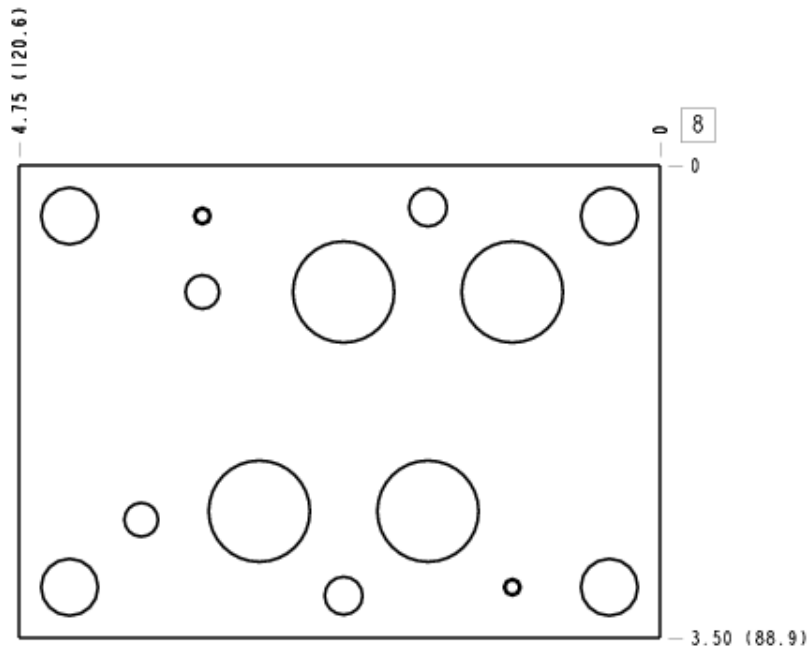
Face 6



Face 7



Face 8



Face 10

