

## Pilot-to-open check valve with sealed pilot and Delrin seat

Functional Group:

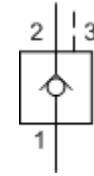
Products : Cartridges : Pilot-to-Open Check : 3-Port, Non-Vented : Sealed Pilot, Delrin Seat

Capacity:  
30 gpm (120  
L/min.)

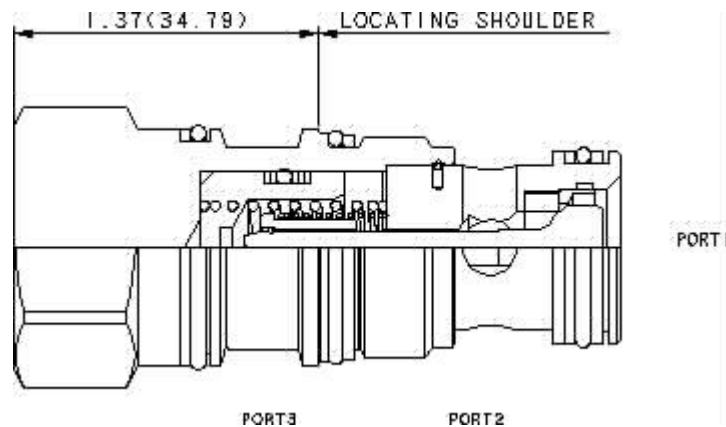
Model:  
CKEC-XAN

### Product Description

This valve is a pilot to open check valve. It has a sealed pilot, a Delrin seat, and is non-vented. It allows free flow from the valve (port 2) to the load (port 1) and blocks flow in the opposite direction. Pressure at the pilot (port 3) will open the valve from port 1 to port 2. Pilot pressure needed at port 3 to open the valve is directly proportional to the load pressure at port 1. Pressure at port 2 directly opposes pilot pressure.



Download



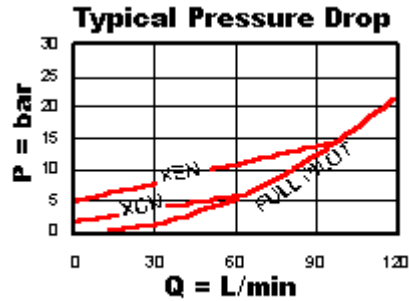
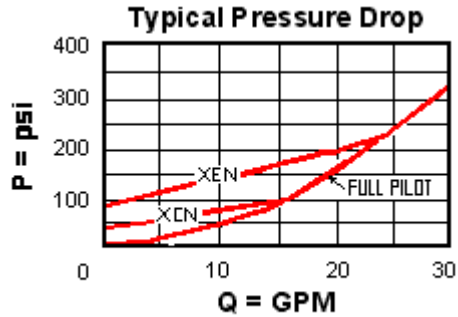
### Technical Features

- Provides hose break protection, prevents loads from drifting and positively locks pressurized loads.
- Optional external porting out of the hex end of the cartridge is available for external piloting. In this configuration, port 3 is blocked. See Control options E, and P.
- Extremely low leakage. If the load drifts due to the valve, the seat has probably been damaged by contamination and the valve should be replaced.
- This 3 port pilot-to-open check valve and 3 port counterbalance valves are physically interchangeable (i.e. same cavities, same flow path for a given frame size). However, cartridge extension dimensions from the mounting surface may vary.
- Sealed pilot for use in circuits where cross port leakage is undesirable.
- The Delrin seat is suitable for dirty, medium pressure systems that are not subjected to high flows or temperatures.
- For models with manual load release control option, turn load release clockwise to release load.
- Incorporates the Sun floating style construction to minimize the possibility of internal parts binding due to excessive installation torque and/or cavity/cartridge machining variations.

### Technical Data

	U.S. Units	Metric Units
Model Weight	0.51 lb.	0.23 kg.
Cavity	T-2A	
Capacity	30 gpm	120 L/min.

Pilot Ratio	3:1	
Maximum Operating Pressure	2500 psi	175 bar
Maximum Valve Leakage at 110 SUS (24 cSt)	1 drops/min.	0,07 cc/min.
Series (from Cavity)	Series 2	
Valve Hex Size	1 1/8 in.	28,6 mm
Valve Installation Torque	45 - 50 lbf ft	60 - 70 Nm
Seal Kits	Buna: 990-202-007	
Seal Kits	Viton: 990-202-006	



### CKEC-XAN

Control

Cracking Pressure

External Material/Seal Material

X Standard Pilot +0.00

A 4 psi (0,3 bar) +2.00

N Buna-N +0.00