

Pilot-to-open check valve with standard pilot and Delrin seat

Functional Group:

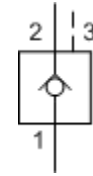
Products : Cartridges : Pilot-to-Open Check : 3-Port, Non-Vented : Standard Pilot, Delrin Seat

Capacity:
15 gpm (60
L/min.)

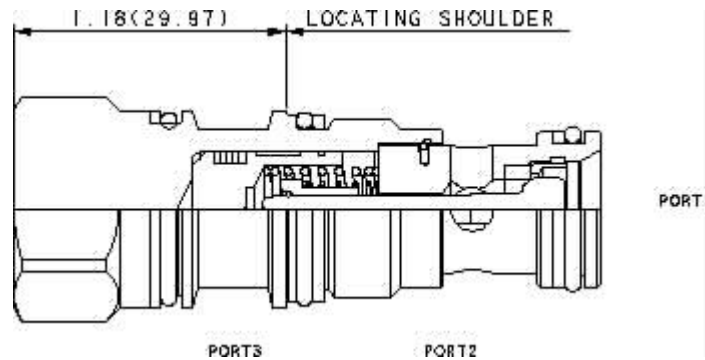
Model:
CKCA-XAN

Product Description

This valve is a pilot to open check valve. It has a non-sealed pilot, a Delrin seat, and is non-vented. It allows free flow from the valve (port 2) to the load (port 1) and blocks flow in the opposite direction. Pressure at the pilot (port 3) will open the valve, allowing flow from port 1 to port 2. Pilot pressure needed at port 3 to open the valve is directly proportional to the load pressure at port 1. Pressure at port 2 directly opposes pilot pressure.



[Download](#)



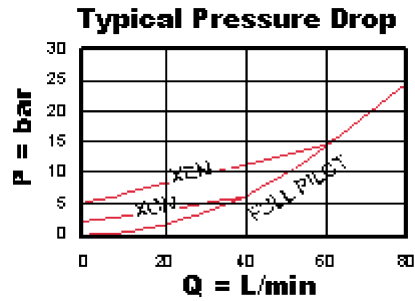
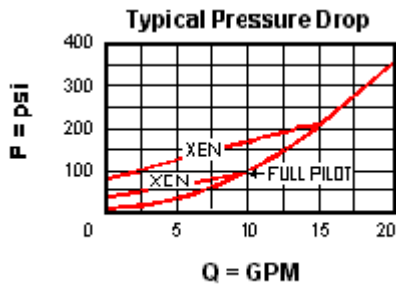
Technical Features

- Provides hose break protection, prevents loads from drifting and positively locks pressurized loads.
- Optional external porting out of the hex end of the cartridge is available for external piloting. In this configuration, port 3 is blocked. See Control options E, and P.
- The Delrin seat is suitable for dirty, medium pressure systems that are not subjected to high flows or temperatures.
- For models with manual load release control option, turn load release clockwise to release load.
- Incorporates the Sun floating style construction to minimize the possibility of internal parts binding due to excessive installation torque and/or cavity/cartridge machining variations.
- Standard unsealed pilot allows air trapped in the pilot line to be purged from the circuit.
- Pilot-to-open check cartridges are locking valves, not motion control valves. For motion control applications, use counterbalance valves.
- Extremely low leakage. If the load drifts due to the valve, the seat has probably been damaged by contamination and the valve should be replaced.
- This 3 port pilot-to-open check valve and 3 port counterbalance valves are physically interchangeable (i.e. same cavities, same flow path for a given frame size). However, cartridge extension dimensions from the mounting surface may vary.

Technical Data

	U.S. Units	Metric Units
Model Weight	0.28 lb.	0.13 kg.

Cavity	T-11A	
Capacity	15 gpm	60 L/min.
Pilot Ratio	3:1	
Maximum Operating Pressure	2500 psi	175 bar
Maximum Valve Leakage at 110 SUS (24 cSt)	1 drops/min.	0,07 cc/min.
Series (from Cavity)	Series 1	
Valve Hex Size	7/8 in.	22,2 mm
Valve Installation Torque	30 - 35 lbf ft	45 - 50 Nm
Seal Kits	Buna: 990-011-007	
Seal Kits	Viton: 990-011-006	



CKCA-XAN

Control

Cracking Pressure

External Material/Seal
Material

X Standard Pilot +0.00

A 4 psi (0,3 bar) +2.00

N Buna-N +0.00