

Pilot-to-open check valve with standard pilot

Capacity:
7.5 gpm (30
L/min.)

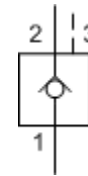
Functional Group:

Products : Cartridges : Pilot-to-Open Check : 3-Port, Non-Vented : Standard
Pilot, Steel Seat

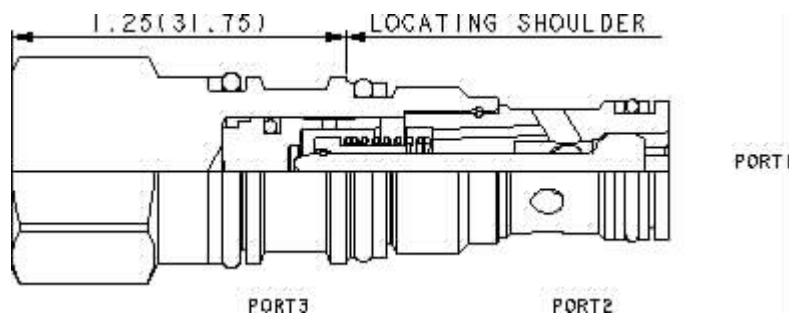
Model:
CKBB-XCV

Product Description

This valve is a pilot to open check valve. It has a non-sealed pilot, a steel seat, and is non-vented. It allows free flow from the valve (port 2) to the load (port 1) and blocks flow in the opposite direction. Pressure at the pilot (port 3) will open the valve from port 1 to port 2. Pilot pressure needed at port 3 to open the valve is directly proportional to the load pressure at port 1. Pressure at port 2 directly opposes pilot pressure.



Download

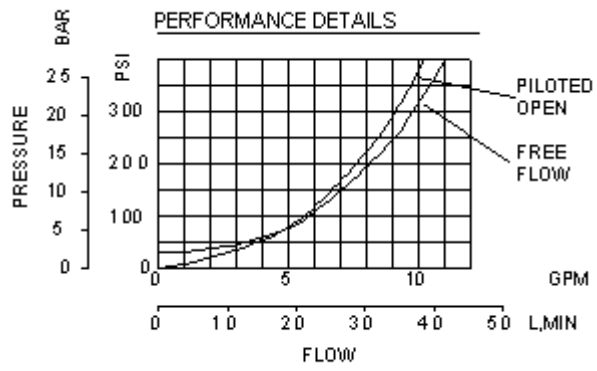


Technical Features

- Provides hose break protection, prevents loads from drifting and positively locks pressurized loads.
- Standard unsealed pilot allows air trapped in the pilot line to be purged from the circuit.
- Extremely low leakage. The seat and poppet are heat treated for long life. If the load drifts due to the valve, the seat has probably been damaged by contamination and the valve should be replaced.
- Note: Available only with 30 psi or 75 psi (2 bar or 5 bar) check valve cracking pressures.
- Pilot-to-open check cartridges are locking valves, not motion control valves. For motion control applications, use counterbalance valves.
- For models with manual load release control option, turn load release clockwise to release load.
- Incorporates the Sun floating style construction to minimize the possibility of internal parts binding due to excessive installation torque and/or cavity/cartridge machining variations.

Technical Data

	U.S. Units	Metric Units
Cavity		T-163A
Capacity	7.5 gpm	30 L/min.
Pilot Ratio		3:1
Maximum Operating Pressure	5000 psi	350 bar
Maximum Valve Leakage at 110 SUS (24 cSt)	1 drops/min.	0,07 cc/min.
Series (from Cavity)		Series 0
Valve Hex Size	3/4 in.	19,1 mm
Valve Installation Torque	25 - 30 lbf ft	35 - 40 Nm
Model Weight	0.20 lb.	0.09 kg.
Seal Kits - Cartridge		Buna: 990-163-007



CKBB-XCV

Control

Cracking Pressure

External Material/Seal Material

X Standard Pilot

C 30 psi (2 bar) +0.00

V Viton +5.00

- Explanation of Sun cartridge control options - US units.
- Explanation of Sun cartridge control options - metric units.

